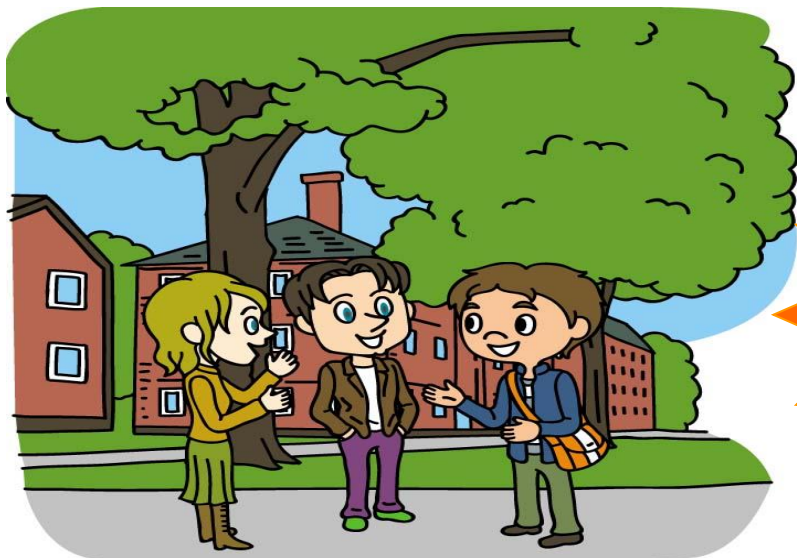


# For Doshisha University Student

## Study Abroad Insurance Application Guide

Insurance provider : Tokio Marine & Nichido Fire Insurance Co.,Ltd.



**37.0%**  
discount

following study abroad are covered

- 1.Doshisha University student exchange programs under university-level agreements
- 2.Doshisha University student exchange programs under faculty / graduate school-level agreements
- 3.Doshisha University study abroad programs for credit-bearing courses
- 4.Self-arranged study abroad programs at language schools, colleges or universities (including those whose enrollment status is “leave of absence”)
- 5.Self-arranged study abroad programs for hands-on experience, such as internships, working holiday, or volunteer activities
- 6.Extra-curricular activities that are organized by Doshisha University official student clubs or circles and are notified to the Department of Student Support Services or the Department of Students Sports Support.

※travelling overseas is not covered.

※study abroad that will start after June 2023 is covered.

Please look the website (office of international affairs) below for more details.

[https://international.doshisha.ac.jp/safetycontrol\\_insurance\\_ossma/insurance\\_and\\_ossma.html](https://international.doshisha.ac.jp/safetycontrol_insurance_ossma/insurance_and_ossma.html)



### Contact details for inquiries

#### Doshisha Enterprise Co.,Ltd. (the main office / second floor)

Kyoto-shi Kamigyo-ku Karasuma St. Kamitachiuri agaru Yanagizushi-cho 339 (on the north side of Kambaikan)

※Students studying at Kyotanabe Campus must contact the office noted above.

※If you have any questions , please look the website (office of international affairs) .

Office hours : 9 : 00~11 : 30、12 : 30~17 : 00  
(except weekend and holidays)

MAIL : [kaiyo-b@doshisha-ep.co.jp](mailto:kaiyo-b@doshisha-ep.co.jp)

TEL : 075-251-3037 / FAX : 075-251-3038