

【Distinguishing between campus harassment cases and cases handled by the Claims Committee when filing a claim against a faculty member】

About the Claims Committee System

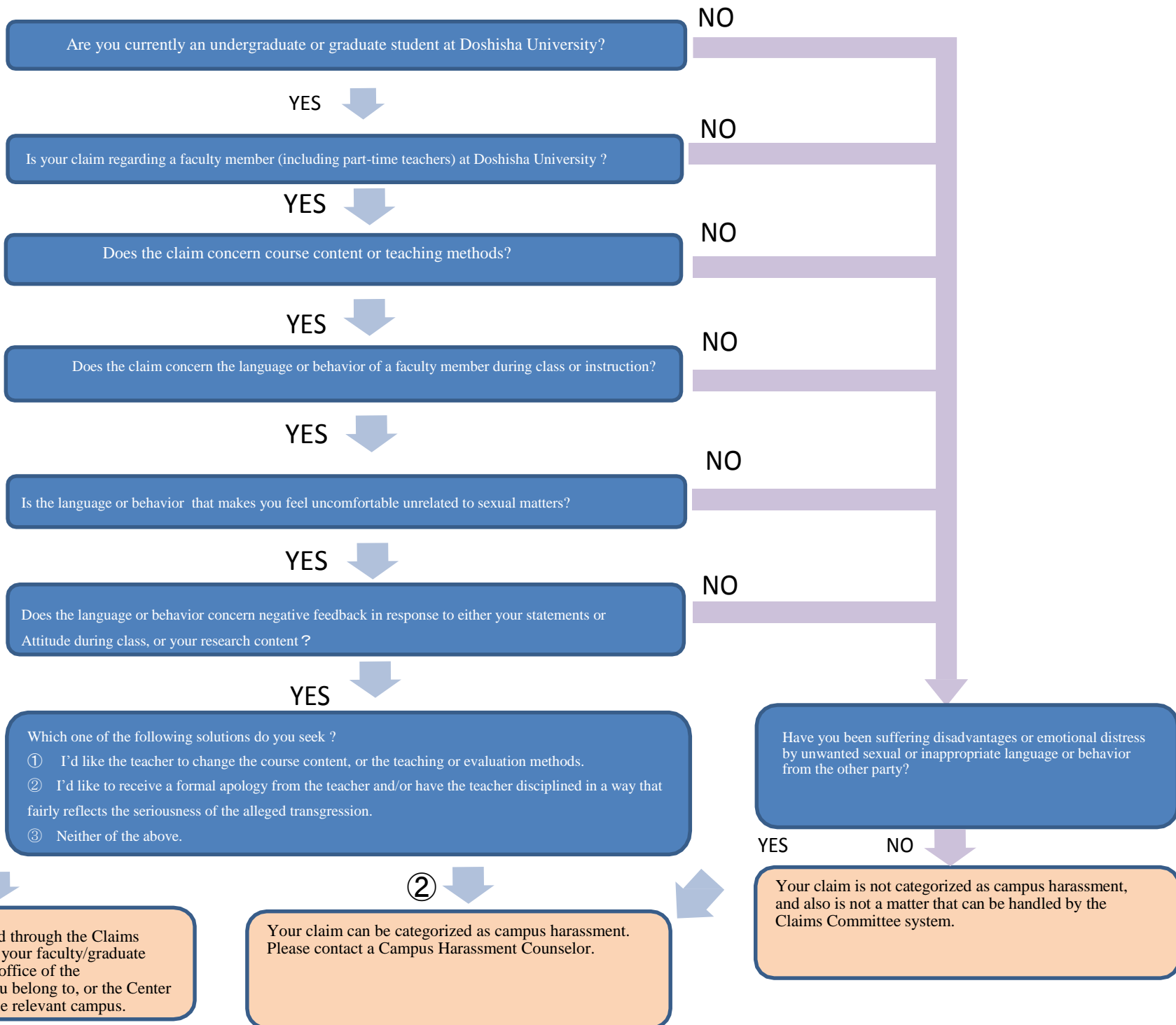
If you have a request or suggestion for improvement regarding the course content or teaching methods of the subjects you are taking, please consult the office of the faculty/graduate school you belong to, or the Center for Academic Affairs of the relevant campus.

Following a request from a student, the Claims Committee of each faculty/graduate school will begin an investigation through the faculty member in charge of the course, and give a response regarding possible causes and measures.

In all cases, the name and ID of the student who files a claim will never be disclosed to the faculty member in charge of the course, and neither will the student suffer any disadvantages as a result of a claim.

About inquiries or objections regarding grade evaluation

If you wish to make an inquiry or objection regarding your grade evaluation, please submit the inquiry form to the office of your affiliated faculty/graduate school or the Center for Academic Affairs of the relevant campus within one week from the date of issuance of the grade report.



①・③
Your claim can be resolved through the Claims Committee system, etc. of your faculty/graduate school. Please contact the office of the faculty/graduate school you belong to, or the Center for Academic Affairs of the relevant campus.

②
Your claim can be categorized as campus harassment. Please contact a Campus Harassment Counselor.

Have you been suffering disadvantages or emotional distress by unwanted sexual or inappropriate language or behavior from the other party?

YES NO
Your claim is not categorized as campus harassment, and also is not a matter that can be handled by the Claims Committee system.