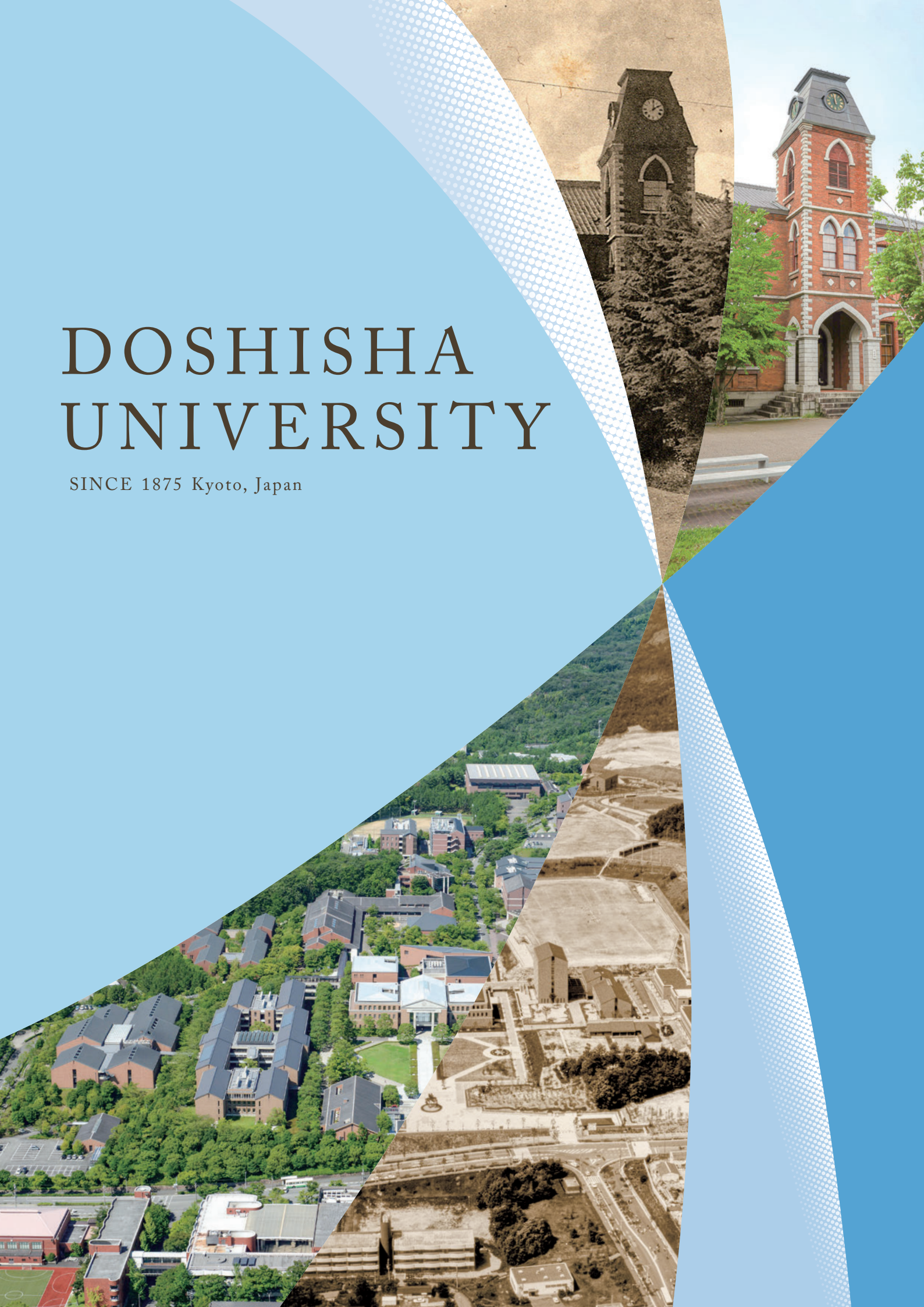


DOSHISHA UNIVERSITY

SINCE 1875 Kyoto, Japan





Approx.

370,000

Alumni and 84 Branches of Doshisha Alumni Association around the world (as of April 2024)



1st

University to provide education based on Christian principles in Japan



More than

90%

of International Students receive Scholarship



28,724

Undergraduate and Graduate Students



330+

Partner Institutions



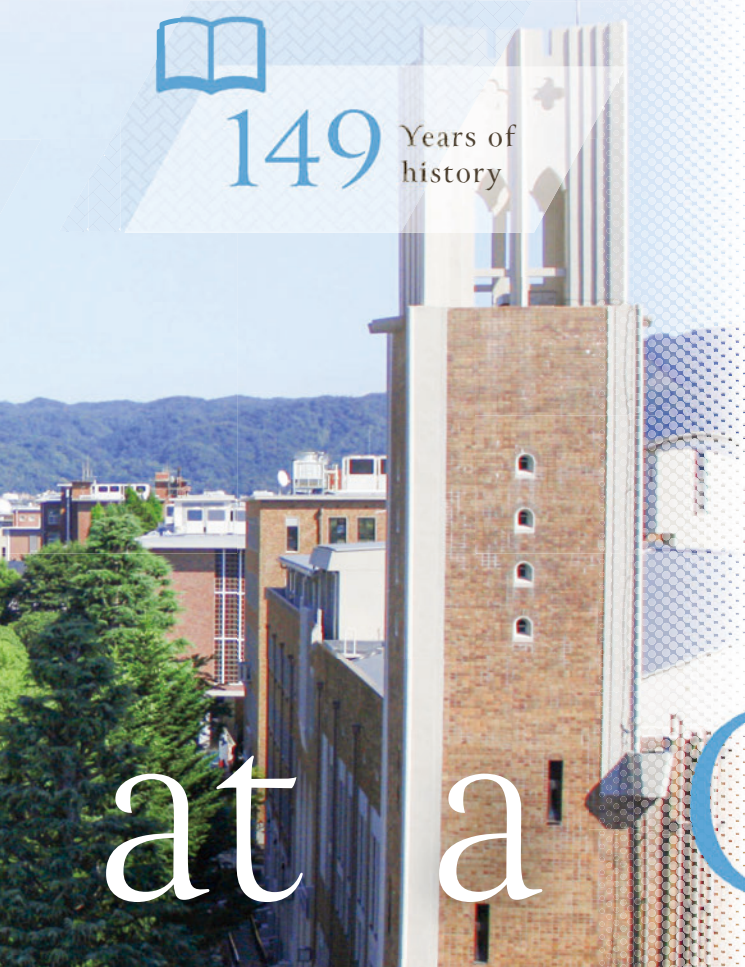
DOSHISHA



149 Years of
history

CONTENTS

- 02 Doshisha at a Glance
- 04 Live in Kyoto and Study at Doshisha
- 06 Heart of Doshisha
-The Vision of Joseph Hardy Neesima-
- 08 Spirit of Doshisha
- 09 Message from the President
- 10 Doshisha EU Campus at Tübingen University
Overseas Offices
- 11 Academic Structure
- 12 Undergraduate School and Faculties
- 16 Graduate Schools
- 20 Degree Courses and Programs Offered in English
- 22 Inbound Programs
- 23 Scholarships
International Cultural Exchange Event
- 24 Student Support
- 25 Foreign Institutions at Doshisha
Outbound Programs
- 26 Organization for Research Initiatives and Development
- 28 Research Institutes and Centers
- 29 Directory of Academic Staff
- 42 Partner Institutions
- 46 Data Sheet
- 47 Directions



at a Glance



Live in Kyoto and Study at Doshisha

Feel the tradition and innovation...

Kyoto is a unique place. In Kyoto, where it prospered as Japan's capital for over 1000 years, you can experience Japanese traditional culture and history that the place succeeded to the present day in everyday life. Taking a break after classes at one of many World Heritage sites can be your daily life.

At the same time, Kyoto is a highly modern city. Many companies that have the largest domestic and/or global market share started from this region, making use of the technologies and craftsmanship cultivated in traditional industries. World-famous companies like Nintendo, Kyocera, Omron and many more that we are proud to present were born right here. Doshisha University shares the feature – Inside our traditional red brick buildings, which some of them are designated as the country's important cultural properties, most advanced education and research is provided. It is a place where tradition and innovation coexists.

in a student/ foreigner friendly, safe environment.

Kyoto is not only a popular tourist destination but also a place chosen for study abroad. About 10,000 foreign students from around the world are studying here. Imadegawa Campus, one of our two main campuses, is located right in the heart of Kyoto City which often is referred to as "Student City", for 1 in 10 resident is a college student. Kyotanabe Campus, the other main campus, is located in Kyotanabe City. This city in the southern Kyoto, with a population of 75,000, is blessed with nature while it is conveniently surrounded by Kyoto, Osaka and Nara (just about half an hour reach to these cities). About 9,000 Doshisha students study at this campus daily. The areas of both campuses are extremely convenient for students, with many apartments, restaurants, shops and entertainments for students. Compared to big cities like Tokyo and Osaka, living expenses in Kyoto is relatively low.

Also... why not explore Japan while you are here?

Japan is not a very large country but it extends from east to west and north to south. The climate varies greatly in east and west, north and south, and by the Pacific Ocean/Japan Sea attaching or not. This climate and geographical diversity brings wide variety of culture that can be seen in food, dialects and lifestyle.

As you can see, Kyoto is at about the center of Japan. If you wish to explore Japan on weekends and long vacations, take bullet train (Shinkansen) from Kyoto Station or in the case of flights, there's an international airport in Osaka which is right next to Kyoto. Base in Kyoto and explore Japan!



Heart of Doshisha

- The Vision of Joseph Hardy Neesima -





The founder of Doshisha University, Joseph Hardy Neesima (Jo Nijima) was born as a son of a samurai in 1843. Due to the social circumstances of that time, he had a serious concern about the future of Japan and realized the importance of studying in Western countries. Neesima left Japan for America in 1864, defying an overseas travel ban. He had begun his adventure in Shanghai and boarded a ship, the Wild Rover, bound for Boston.

Under the benevolent support of A. Hardy, the owner of the Wild Rover, Neesima studied at Phillips Academy and Amherst College. He returned to his homeland after ten years with a strong ambition to establish a Christian university as well as to spread Christianity. Upon returning to Japan, Neesima established Doshisha Eigakko (Academy) in 1875.

He wished not only to nurture individuals with diverse skills and abilities but also to nurture those who would put their conscience into practice. He died in 1890, at the age of 46, without fulfilling his ambition. However, his students and those who had the same ambition passed on his legacy and established Doshisha University in 1912.

Doshisha will celebrate its 150th anniversary of establishment in 2025.

As a milestone toward the realization of the “ideal education” that we aim for, VISION 2025 below summarizes what Doshisha should look like at the time of its 150th anniversary. Neesima's spirit are expressed as 6 visions, forming a rudder that will lead Doshisha University to the path we should take.

1. Pioneer new learning methods
2. Improve the quality of campus life
3. Advance creativity and collaboration in research
4. Welcome motivated students
5. Further evolve internationalism
6. Develop our brand strategy

<https://doshisha-vision2025.jp/en/> ▶

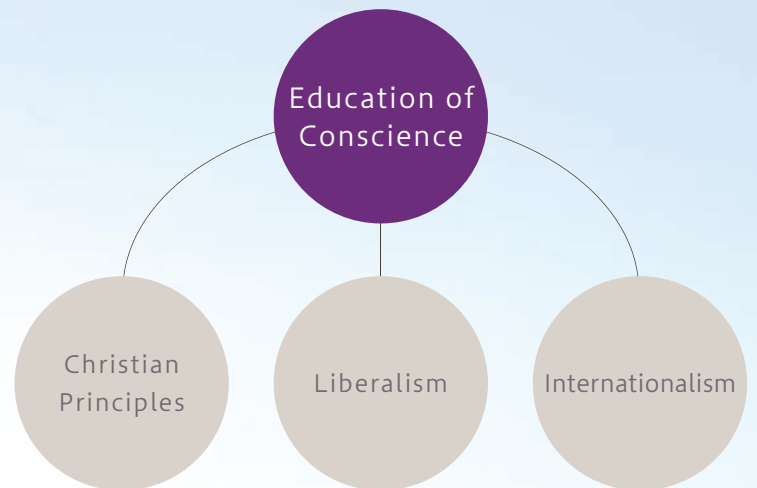


<https://www.doshisha.ac.jp/en/information/neesima/index.html> ▶



Spirit of Doshisha

For the past 149 years, Doshisha University has been committed to the idea of “education of conscience,” or nurturing “those who use their abilities as conscience dictates.” University founder Joseph Hardy Neesima’s educational philosophy is encapsulated in the words engraved on the memorial monument at the main gate of Imadegawa and Kyotanabe campuses, which read, “I earnestly desire that many young people filled with conscience will be raised and sent out by our school.” Doshisha has indeed sent many promising graduates out into the world since its Neesima’s time. The spiritual pillars of our educational activities: “Christian principles,” “liberalism,” and “internationalism” reflect this background.



Message from the President

There are many iconic historical figures in modern Japan, but none of them lived as adventurous a life as that of Joseph Hardy Neesima, the founder of Doshisha. His life was full of many journeys, blessed with many people who supported him, and his passion moved many people in turn. Throughout his career as a teacher at Doshisha, he emphasized the importance of taking on challenges without being restricted by conventional ideas. His last words express the essence of Doshisha education: "Doshisha will not suppress the independent-minded students." I believe that Doshisha is entrusted with a unique mission to continue to forge new paths and that it is my duty as President to lead the adventure to accomplish this mission.

In the world today, there are many serious problems, such as climate change, widening economic disparities, discrimination, and conflicts. No matter how difficult they might be, we need to find solutions to these problems; otherwise, Japan and the world may find themselves in an even more severe situation in the next 50 years. Now, more than ever, people of conscience are needed to create a better society through the appropriate use of science, technology, and academic knowledge. Through education and research, Doshisha hopes to cultivate "practitioners of conscience" who will actively and boldly take on the challenges of our times.

In 2025, Doshisha will celebrate the 150th anniversary of its foundation. What kind of university will Doshisha become in the future? In his later years, Neesima had dreamed of establishing Doshisha as a university but died in 1890 without seeing it accomplished. He envisioned the university to be like a "Deep Forest and Large Lake," writing, "A dragon might be born from within a Deep Forest and Large Lake" and "Make Doshisha like a Deep Forest and Large Lake where both small and large fish will grow and develop as they should." Neesima's metaphor of a "Deep Forest and Large Lake" can be paraphrased in today's parlance as "an environment full of diversity and wonder where various personalities are nurtured," which represents what Doshisha University has aspired to be since its founding.

The ideals of "Deep Forest and Large Lake" are not limited to the current campuses. Doshisha University has produced approximately 360,000 alumni, and many are active in various fields and support the University. The Doshisha community, connected across generations, is like a "Deep Forest and Large Lake" and a "community of conscience" with great potential.

Looking back at the steps our predecessors took over the past 150 years, we are now moving toward a "new future," which is not merely an extension of the present. What will this new future for Doshisha look like? It will take shape through the involvement of Doshisha's students, faculty, staff, and alumni. A new adventure is about to begin.



KOHARA Katsuhiko
President
Doshisha University



Doshisha EU Campus at Tübingen University

Doshisha EU Campus at Tübingen University, our first overseas campus is located within the precincts of Tübingen University in Germany.

The utilization of the EU Campus in the following ways is a major pillar of our “Doshisha Vision 2025”

1. Developing academic exchanges and educational activities not only in the comparative study of Japan, Germany, and Europe, but also generally in various fields such as theology, philosophy, ethics, history, literature, education, psychology, sociology, anthropology, archaeology, law, political science, economics, commerce, life and medical sciences, science and engineering, culture and information science, health and sports science, global studies, the study of “conscience”, and conflict studies.
2. Promoting cooperation with diverse, world-class universities and research institutes across Europe, in addition to further

strengthening the existing partnership with Tübingen.

3. Improving the dissemination in English of information on Doshisha research and educational activities.
4. Enhancing the educational environment for Doshisha students at the EU Campus by creating learning opportunities with Tübingen students who have studied at the Tübingen Center for Japanese Studies at Doshisha University and also offering specialized undergraduate courses after 2020 in addition to general and liberal education courses.

EU Campus Fellow, locally hired academic staff, and staff from the Office of International Affairs at Doshisha University (pictured below, left to right) are stationed in Tübingen to support Doshisha students and faculty in their activities in Tübingen, as well as various exchanges between the two universities.



Overseas Offices

Doshisha University's overseas offices were established in order to further promote rapid and effective internationalization. We mainly use them to implement public relations activities to increase the profile of Doshisha University, while at the same time, making the most of characteristics unique to each local. In addition, we are undertaking various efforts to recruit overseas students, support our students while they are studying overseas, and provide on-site support to members of our faculties while they are overseas.

Overseas Offices [As of June 2024]

Taipei (Taiwan)
Seoul (South Korea)
Tübingen (Germany)

Academic Structure

Undergraduate School and Faculties

Departments	
School of Theology	› Theology
	› English
	› Philosophy
Faculty of Letters	› Aesthetics and Art Theory
	› Cultural History
	› Japanese Literature
Faculty of Social Studies	› Sociology
	› Social Welfare
	› Media, Journalism and Communications
	› Industrial Relations
	› Education and Culture
Faculty of Law	› Law
	› Political Science
Faculty of Economics	› Economics
Faculty of Commerce	› Commerce
Faculty of Policy Studies	› Policy Studies
Faculty of Culture and Information Science	› Culture and Information Science
	› Intelligent Information Engineering and Sciences
	› Information Systems Design
	› Electrical Engineering
	› Electronics
	› Mechanical and Systems Engineering
	› Mechanical Engineering and Science
	› Molecular Chemistry and Biochemistry
	› Chemical Engineering and Materials Science
Faculty of Science and Engineering	› Environmental Systems Science
	› Mathematical Sciences
	› Biomedical Engineering
Faculty of Life and Medical Sciences	› Biomedical Sciences and Informatics
	› Medical Life Systems
Faculty of Health and Sports Science	› Health and Sports Science
Faculty of Psychology	› Psychology
Faculty of Global Communications	› Global Communications
Faculty of Global and Regional Studies	› Global and Regional Studies
The Institute for the Liberal Arts	
Center for Global Education and Japanese Studies	

Graduate Schools

	Master's Programs	Doctoral Programs
Graduate School of Theology	› Theology	› Theology
	› Philosophy	› Philosophy
	› English Literature and English Linguistics	› English Literature and English Linguistics
Graduate School of Letters	› Cultural History	› Cultural History
	› Japanese Literature	› Japanese Literature
	› Aesthetics and Art Theory	› Aesthetics and Art Theory
Graduate School of Social Studies	› Social Welfare	› Social Welfare
	› Media Studies	› Media Studies
	› Education and Culture	› Education and Culture
	› Sociology	› Sociology
	› Industrial Relations	› Industrial Relations
Graduate School of Law	› Political Science	› Political Science
	› Private Law	› Private Law
Graduate School of Economics	› Public Law	› Public Law
	› Economic Theory	› Economic Policy
Graduate School of Commerce	› Applied Economics	
	› Commerce	› Commerce
Graduate School of Policy and Management	› Policy and Management	› Policy and Management
	› Technology and Innovative Management (Five-Year Doctoral Program)	
Graduate School of Culture and Information Science	› Culture and Information Science	› Culture and Information Science
	› Information and Computer Science	› Information and Computer Science
	› Electrical and Electronic Engineering	› Electrical and Electronic Engineering
	› Mechanical Engineering	› Mechanical Engineering
	› Applied Chemistry	› Applied Chemistry
Graduate School of Science and Engineering	› Science of Environment and Mathematical Modeling	› Science of Environment and Mathematical Modeling
	› Biomedical Engineering and Informatics	› Biomedical Engineering and Informatics
	› Medical Life Systems	› Medical Life Systems
Graduate School of Life and Medical Sciences	› Health and Sports Science	› Health and Sports Science
	› Psychology	› Psychology
Graduate School of Psychology	› Psychology	› Psychology
Graduate School of Global Studies	› Global Studies	› Global Studies
Graduate School of Brain Science	› Brain Development and Aging (Five-Year Integrated Doctoral Program)	
Law School	› Law School (Professional Graduate School)	
Graduate School of Business	› Business Studies (Professional Graduate School)	
	› Global Business and Management Studies	

Undergraduate School and Faculties

School of Theology

<https://theo.doshisha.ac.jp/en>



Since its foundation in 1875, the School of Theology has established itself as a pioneer in the field of Christian theology in Japan, where the number of institutions offering opportunities to study religions academically is limited. A thorough study of religion leads to a deeper and more comprehensive understanding of human beings and their societies, cultures, and histories.

Since 2003, the School of Theology has been vigorously promoting interdisciplinary studies of three monotheistic religions believed to have originated with Abraham: Judaism, Christianity, and Islam. Followers of Judaism, Christianity, or Islam together make up 55 percent of the world's total population. To understand the current situation of the world, it is essential to gain a clear understanding of the Abrahamic religions. The School of Theology aims to play a role as "mediator" in achieving peace and mutual understanding between the world's regions and civilizations. At the School of Theology, the number of compulsory courses is reduced to a minimum so that students can freely organize their own curriculum depending on their concerns. Students can also improve their linguistic ability needed to study the three Abrahamic religions of Hebrew, Koine Greek, and Arabic.

The School of Theology has fostered numerous "professionals with values," including ministers, teachers, social workers, and counselors working at hospitals and welfare facilities.

Faculty of Social Studies

<https://ss.doshisha.ac.jp>



JAPANESE ONLY

Social studies is concerned with how our everyday life is affected by our environment and the ties we create with it. The Faculty of Social Studies encourages students to pursue issues related to contemporary society and to foster an understanding of the processes that shape social networks, communities and institutions in an increasingly globalized world. Social studies covers the whole range of human behaviour ranging from regional conflicts, labour alienation and unemployment to changing notions of the family, aging societies and the welfare state. The Faculty of Social Studies is broad-based and offers majors in five areas: Sociology, Social Welfare, Media, Journalism and Communications, Industrial Relations, and Education and Culture. A course in social studies will enable students to use a broad range of analytical tools and to think critically about contemporary social problems in a stimulating setting. We place emphasis on instruction in small groups and personal guidance by faculty members and student tutors. Both theoretical training and practical experience are creatively combined to create a holistic learning experience. Whether in fieldwork, social surveys or quantitative analysis, our graduates will acquire the skills needed to conduct successful inquiries into the nature of society from a humanistic point of view.

Faculty of Letters

<https://letters.doshisha.ac.jp>



JAPANESE ONLY

The Faculty of Letters consists of five departments: English, Philosophy, Aesthetics and Art Theory, Cultural History, and Japanese Literature. All have a common purpose: to encourage students to seek for themselves the meaning and value of the humanities—and, indeed, to ask themselves what it means to be human. The philosophy of Joseph Hardy Neesima, rooted in mutual respect and understanding, on the basis of Christianity still animates classrooms in the Faculty of Letters. Small-sized seminars—typically of ten to twenty students—offer students and faculty alike a unique opportunity to exchange and develop ideas. While pursuing their major course of study, students in the Faculty of Letters may also register in our Minor Degree Program. Complementing their major with a minor field of study, students can expand their academic interests and widen their intellectual horizons.

Faculty of Law

<https://law.doshisha.ac.jp>



JAPANESE ONLY

The goal of the Faculty of Law is to equip students with the ability to identify problems in various social spheres and provide adequate solutions based on the concept of the "legal mind", essential to solving problems with sound judgment and a sense of fairness. The Faculty's education provides students with a broad-ranging and highly relevant qualification that will prove invaluable for professional careers in many different fields.

The Faculty consists of the Department of Law and Department of Political Science. The main characteristic of the curriculum of the Department of Law is the "step-up system," in which students take introductory subjects, basic subjects, and advanced subjects, step by step. The advanced subjects cluster offers a choice of four models, enabling students to acquire specialized knowledge according to their individual interests and career options.

The curriculum of the Department of Political Science is also based on the "step-up system." Students have a choice of three core-course advanced subject areas: International Relations, Modern Political Science, and History and Thought. By choosing one of the three subject areas, students can assimilate advanced specialist knowledge in step with their own personal interests and future careers in mind.

Faculty of Economics

<https://www.econ.doshisha.ac.jp/en> ▶



The Faculty of Economics is an educational body that emphasizes its ongoing contributions to the improvement of economic competition, advancement of social justice, reduction of poverty, and promotion of creativity and arts. To realize this mission, we have cultivated an educational approach that facilitates the ability to identify economic issues in contemporary society, rigorously analyze them using various scientific techniques, and develop advanced capabilities in the evaluation of public policies.

The faculty's strength lies in its highly-qualified research professors teaching a variety of subjects, such as macroeconomics, microeconomics, econometrics, environmental economics, public economics, cultural economics, institutional economics, economic history, development economics, game theory, industrial organization, international trade and finance, and labor economics.

The most important aspect of our learning approach for improving students' skills in logical and analytical thinking was developed during our seminars. In seminars, students are required to collect relevant materials, analyze quantitative and qualitative data, construct theoretical models, and investigate unsolved challenges in small groups. These intensive activities establish an innovative and impactful environment of active and interactive learning. Our sophisticated curriculum is devised for students to acquire advanced IT skills in addition to building advanced capabilities in the economics field.

Faculty of Commerce

<https://com.doshisha.ac.jp> ▶



JAPANESE ONLY

The Faculty of Commerce aims to produce graduates who have acquired: basic knowledge of industrial and economic issues and activities; the ability to analyze issues associated with enterprise and industry; and effective problem-solving and decision-making skills. We seek to achieve these aims by providing systematic educational policy on our areas of expertise including commerce, finance, marketing, international business, business administration, accounting, economics, and so forth. Students are to take foundational classes in basic subjects in their first year and advanced classes in core subjects starting in their second year. In the spring term of their third year, students can select two core subject clusters from a choice of five, depending on their individual educational goals. From that point forward, they strive to improve their specialist knowledge through the organized study of a broad variety of subjects (including subjects outside their chosen clusters) albeit with emphasis on their chosen clusters. In addition, new subjects with fresh content are introduced from time to time in response to changing trends and expectations. Special features of the faculty are: classes offering firsthand experience on the forefronts of the business scene; an emphasis on the 'first-year experience' that stimulates the desire to learn; support for students seeking careers as business professionals.

Faculty of Policy Studies

<https://policy.doshisha.ac.jp> ▶



JAPANESE ONLY

The Faculty of Policy Studies seeks to foster resourceful and ambitious students who are capable of resolving local as well as global issues. Such talents with diverse perspectives are in high demand throughout all domains of our society.

Inter-Disciplinary Studies in Social Science and Project-Based Learning

Our program provides theoretical backbone and analytical practice through a wide range of lectures and classes, which consolidate economics, law, organizational theory, politics and public administration. The students are expected to broaden their perspectives starting from introductory courses to further specialized subjects. Our small-scale classes, starting in the first year, provide opportunity to practice debates and Project-Based Learning.

To Be an Intelligent Decision-Maker in Private and Public Sectors

It is the skills they can develop throughout our program – providing solutions to problems with balanced points of view – that help students play a leading role in such areas as business, journalism, politics and public administration. The Faculty of Policy Studies will be the perfect choice for those who are willing to expand their fields of interests, acquire practical skills in analyzing social issues, and contribute to solving various problems in our society.

Faculty of Culture and Information Science

<https://www.cis.doshisha.ac.jp/english/> ▶



The Faculty of Culture and Information Science, established in 2005, attracts approximately 300 undergraduate students worldwide each year. Our primary goal is to nurture specialists who possess the ability to comprehend and analyze culture as a subject, utilizing the methodologies of data science. To achieve this, we offer a diverse range of lectures encompassing academic fields such as cultural resource studies, linguistics, and behavioral data science. Additionally, we provide opportunities for our students to develop their knowledge and skills in data science, including mathematics, statistics, and computer science.

Once equipped with these essential skills and a growing interest in various aspects of culture, our students have the chance to engage in the "Research Seminar" program during their third academic year. This program allows them to refine their research methods and skills, preparing them for their final academic year when they undertake their graduation research. We take great pride in nurturing highly skilled young scholars who possess a broad understanding of diverse cultures. These individuals are poised to lead global advancements across numerous domains, including academia, media, business, and the IT industry in the years ahead.

Undergraduate School and Faculties

Faculty of Science and Engineering

<https://se.doshisha.ac.jp> ►



JAPANESE ONLY

To meet societal demands, the Faculty of Science and Engineering provides “Education of Conscience” in accordance with our basic philosophy of “Using science and technology to benefit the people.” We believe that a high standard of ethics and a strong sense of humanity are essential for correctly grasping the problems that confront society today, and for responding appropriately to technological advances and changing needs. The Faculty offers a broad variety of subjects in natural and human sciences and other fields in addition to specialized subjects. Our curriculum is designed to encourage student individuality and impart a multilateral perspective.

Another major focus of our curriculum is to strengthen students’ academic foundations. We provide small classes to ensure that, while developing individual character and basic competences, students acquire a deep interest in MONOZUKURI, the “art” in making things, enabling them to more effectively use their learning for the good of society.

For its part, the Faculty is proud to have world-class laboratory facilities and equipment, and collaborates extensively with private enterprises and other universities. By imparting education that cultivates a deep sense of ethics, and by promoting world-leading research activities, the Faculty seeks to foster engineers and scientists with interdisciplinary and global perspectives, serving in the international arena.

Faculty of Life and Medical Sciences

<https://biomedical.doshisha.ac.jp/en/overview/concept.html> ►



To prepare future top researchers and engineers in the biomedical fields, the Faculty of Life and Medical Sciences offers integrated, multidisciplinary educational programs that cover medical, biological and engineering topics.

Department of Biomedical Engineering provides a multidisciplinary education to prepare professional engineers who will develop innovative future life technologies. The curriculum for this course focuses on mechanical engineering, and offers diverse perspectives for next-generation engineers.

Department of Biomedical Sciences and Informatics also provides an excellent curriculum in the fields of electrical engineering and information technology which are essential subjects for the development of future medical diagnostic systems.

Department of Medical Life Systems offers diverse curricula in medical sciences. This course provides a multidisciplinary education leading students to become professional researchers in diverse fields which require specialized knowledge and technology in basic medical sciences.

Linked with our graduate studies program, these well-organized curricula will foster future researchers.

The Faculty of Life and Medical Sciences also offers a unique double-degree study abroad program that gives students invaluable experience.

Faculty of Health and Sports Science

<https://sports.doshisha.ac.jp/en> ►



Three Main Fields and Classes for Free Selection

Health and Sports Science is one of the wide-ranging academic fields. The Faculty of Health and Sports Science offers three main academic fields; Health Science, Training Science and Sports Management. Selection of the three fields is freely opened to the students. Depending on each student’s aspiring career path and purposes, students can focus on a single field or choose classes across the three fields.

Cultivate Individuals Who Can Contribute to Health Promotion and Development of Sports Environment

As a result of drastic changes in lifestyle and the aging society, sports play an important role to improve quality of life and promote health. The main concept of the Faculty of Health and Sports Science is to cultivate various human resources capable of contributing to health promotion and development of social environment in sports.

New Learning Experience and Well-Developed Research Environment Inside and Outside Campus

The Faculty of Health and Sports Science is located at the Kyotanabe Campus. The facility is equipped with various instruments for physiological, biological, and biomechanical research. We aim to develop a research environment of life science and medicine by cooperating with research and medical institutions inside and outside the university.

Faculty of Psychology

<https://psych.doshisha.ac.jp/english> ►



The Faculty of Psychology at Doshisha University provides a systematic education of specialized knowledge and skills in psychology. The emphasis has been placed on empirical approach to the understanding of mind and behavior. In addition to the lecture courses, practice in psychological assessments, statistical analysis, and fundamental and advanced experiments are also required for all students. The Faculty of Psychology offers three courses: the Neuropsychology and Behavioral Psychology Course, the Clinical and Social Psychology Course, and the Developmental and Educational Psychology Course, providing students with a broad range of expertise that cut across these traditional areas of psychology.

Education in Small-Size Classes

Classes are set up, so all undergraduates, from first-year students to fourth-year students, study in small-size classes. This ensures that each student receives extensive attention and support in following an individualized curriculum.

Project-Based Education

Project-based seminars are offered to provide training for proactively applying scientific knowledge and skills to real life issues.

Advanced Training

Advanced classes providing practical training in a wide variety of research methods in psychology are offered to third-year students, enabling them to acquire specialized skills and an integrated understanding of psychological, biological, and social sciences.

Faculty of Global Communications

<https://globalcommunications.doshisha.ac.jp/en> ▶



With the strategic knowledge acquired in the Faculty of Global Communications, graduates are expected to become successful negotiators and administrators in organizations involved in international business, education and culture. Choosing from one of the three programs of study: English, Chinese or Japanese, students will learn complex language skills that are critical for international success. Moreover, they will gain an awareness of how to adapt and succeed in the many aspects of our rapidly changing world.

All of the students in the English and Chinese Courses will participate in a one-year Study Abroad program. Through this experience, students will gain an in-depth understanding of foreign cultures and increase their chances to contribute to the global society in a meaningful way.

Our Japanese degree course aims to provide students from abroad with a deep understanding of Japanese language and culture. Moreover, students will be able to navigate not only the academic world for further study but also the business world for a successful career. Through the Seminar on Japanese Society, and through a program of cultural-immersion experiences, communication skills will be honed and cultural understanding will be broadened.

The culmination of the 4-year program in the Faculty of Global Communications is the Seminar Project. Students will take the initiative in proposing, planning, and administering original projects such as an international conference or a major cultural event. Through the management of such a project, students will “learn by doing,” which is the best preparation for working in a global environment.

Faculty of Global and Regional Studies

<https://gr.doshisha.ac.jp/en> ▶



In recent years the media is constantly encouraging us “to think from a global perspective.” However, most global problems arise from regional conflicts between cultures, peoples, or economic systems. Consequently, in order to effectively deal with the issues affecting the world today, it is indispensable that we deeply understand the regional issues and cultures behind them.

The Faculty of Global and Regional Studies seeks to give students, who belong to one of the three divisions: Europe, Asia Pacific, or the Americas, a solid grounding in local cultures, histories, and societies from an interdisciplinary perspective by training them in the use of the various languages used in these regions, the analysis of the problems facing each region, and the process of thinking about ways to resolve them. At the same time, it carries out research from a global perspective because while each region has its own distinctive characteristics, they exist in dynamic relation to each other. Through four years of study and research from both a global and regional perspective, students acquire the ability to be active in the international community from various perspectives.



Graduate Schools

Graduate School of Theology

<https://theo.doshisha.ac.jp/en> ▶



The Graduate School of Theology occupies a unique and important place as a center for religious studies in Japan where the number of institutions that offer opportunities to study religions academically is limited. The Graduate School of Theology provides programs of study leading to the degrees of Master of Theology and Doctor of Theology. The M.Th. Program is divided into five major courses of study: Biblical Theology, Historical Theology, Systematic Theology, Practical Theology, and Interdisciplinary Study of Monotheistic Religions.

The Biblical Theology Course aims to understand and interpret the Bible by analyzing the texts in their social and cultural settings. The Historical Theology Course is concerned with the historical development of diverse Christian beliefs, practices, and communities. The Systematic Theology Course deals both with clear understanding of various religious thoughts and with their meaning for and relevance to the problems with which our society is faced. The Practical Theology Course enables students to prepare theoretically and practically for such careers as ministry, education, and social work. The Interdisciplinary Study of Monotheistic Religions Course undertakes interdisciplinary and comprehensive research on Judaism, Christianity, and Islam, and their civilizations in the search for coexistence among diverse religious traditions.

Graduate School of Social Studies

<https://ss.doshisha.ac.jp> ▶



JAPANESE ONLY

Globalization and information literacy, regional conflicts and terrorism, labour alienation and unemployment, low birth-rate, the ageing population and the changing family system, changes in education and personality development for the next generation - these changes in society have a fundamental influence on human beings and their way of life. Social Studies, at the graduate level, attempts to comprehensively investigate these social changes and to systematically understand the restructuring of the complex framework of society. The ultimate goal for graduate students is to acquire methodological skills for examining issues from a professional as well as a humanistic perspective in areas such as: relationships between individuals and society; welfare problems; interpersonal relationship in the work environment; cultural and educational issues in personality development; and mass media as a reflection of society. With the five majors of Social Welfare, Media Studies, Education, Sociology and Industrial Relations, the Graduate School of Social Studies serves as the university headquarters for humanistic studies of social sciences. Graduates of the school are expected to be competent in utilising rigorous methodology in order to comprehensively investigate the nature of various social changes in their field of expertise. Our graduates will, therefore, be able to play a leading role in society with their highly specialized knowledge and international perspectives.

Graduate School of Letters

<https://letters.doshisha.ac.jp> ▶



JAPANESE ONLY

We in the Graduate School of Letters ask a central question: what does it mean to be human? The question is as old as human history, and as universally debated as it is ancient. And yet we ask that question now with fresh urgency, as global networks of alliance, commerce, and communication bind all people together, across oceans and continents. In the Graduate School of Letters, we bear always in mind, in this new era, the necessity of balancing innovation with tradition, and the local with the global.

The Graduate School of Letters consists of five programs: Philosophy; English Literature and English Linguistics; Cultural History; Japanese Literature; and Aesthetics and Art Theory. In each program, students can earn a Master of Arts degree, a Doctorate, or both. Students pursuing a Master's degree develop a command of their special field of study, while Doctoral candidates mark out for themselves highly advanced, unique programs of research. Our graduate programs prize cooperation with foreign universities and researchers, and cultivate talented scholars—scholars who will, we hope, become leaders in academia and beyond.

Graduate School of Law

<https://law.doshisha.ac.jp> ▶



JAPANESE ONLY

The Graduate School of Law offers master's and doctoral degrees in three areas of specialization: political science, private law, and public law. The political science specialization includes the fields of the history of political thought, contemporary political process, and international relations. The public law specialization deals with legal systems concerning constitutional law, administrative law, tax law, criminal law, international law, and legal theory. The private law specialization mainly concerns laws relating to civil life and business practices. We are one of the first Japanese universities to introduce a systematic and practical program on corporate legal affairs.

We offer opportunities for students who have a strong interest in international fields, such as diplomacy, international legal affairs, and international business, by providing various overseas study programs: Dual-Degree Programs and Exchange Programs in Europe, North America, and Asia.

Our alumni are active in various fields, such as the academic community, the legal community, journalism, local and national government, international organizations, and business in Japan and elsewhere.

Graduate School of Economics

<https://www.econ.doshisha.ac.jp/en>



The Graduate School of Economics aims to nurture both academic researchers and those who can serve as policymakers and specialized professionals based on the economics skills such as quantitative analysis, mathematical analysis, historical analysis, policy analysis, cultural and environmental management.

Our Master's Program consists of two majors and each major is divided into two courses to make education and research effective.

- Economic Theory
 - Theoretical Analysis Course
 - Political Economy & Economic History Course

- Applied Economics
 - Applied Economics Course
 - Creative Economy Course

In addition, we provide two unique programs: Professional Studies in English (PSE), which aims at improving students' English skills, and Contemporary Studies, which deals with up-to-date topics in economics.

The Doctoral Program comprises the Course for fostering researcher and the Special Course for Adult Students. The former aims to cultivate researchers specializing in economics who can play an active role as faculty members at universities and researchers at research institutes. The latter is designed for those who have accumulated research experience, providing them with guidance in writing their doctoral theses. Overall, the central goals of the Doctoral Program are to provide an opportunity to undertake further research in specialized areas towards obtaining a doctoral degree, and to develop profound knowledge and research capabilities in economics and the related disciplines.

Our faculty provides a wide range of scholarship assistance for graduate students. Additional information can be found at <https://www.econ.doshisha.ac.jp/en/>.

Graduate School of Commerce

<https://com.doshisha.ac.jp>



JAPANESE ONLY

With the progress of internationalization and informatization, the economic system is rapidly changing and new business models are being created. The Graduate School of Commerce aims to cultivate specialists who use their advanced expertise to minutely analyze the uncertain, drastically changing industrial society and deal with the challenges that arise therein.

The Master's Program is divided into four courses of Data Science, Marketing, Management and Accounting, and students with different interests stimulate each other to improve their research skills. Alumni are working in various fields as specialists such as an administration executive, a small and medium enterprise management consultant, a certified public accountant, a tax accountant, an investment manager, and staff of international organizations. The Doctoral Program trains its students to acquire the ability to work as an independent researcher, guiding them through a phased process towards obtaining the doctoral degree and sending out numerous competent researchers to universities and research institutions.

Graduate School of Policy and Management

<https://policy.doshisha.ac.jp>



JAPANESE ONLY

While modern society has greatly benefited from the impressive progress of science and technology, it is also facing grave threats from new problems such as environment degradation. Due to these factors, the policy issues have become multifaceted and complex, requiring innovative approaches to finding appropriate solutions.

The Graduate School of Policy and Management aspires to synthesize multiple disciplines to tackle the emerging policy concerns, and to establish a new interdisciplinary branch of knowledge in the area of policy analysis and implementation. In addition to Doshisha University's full-time faculty, its teaching staff includes local government officials, professionals with reputable business experience, and leaders of nongovernment organizations, who are actively involved in actual policy making.

The Graduate School consists of one department: Department of Policy and Management (DPM). DPM has master's and doctoral programs in policy studies (including public, corporate, and international policies). The department is designed to develop problem-solving capabilities, so that the students may take leadership roles in various organizations such as central and local governments, policy think-tanks and business enterprises.

Graduate School of Culture and Information Science

<https://www.cis.doshisha.ac.jp/english/gs>



At Doshisha University, the Graduate School of Culture and Information Science offers up-to-date postgraduate programs. Both the M.A. and Ph.D. programs offered by the Graduate School are closely linked with the curriculum of the Faculty of Culture and Information Science. The Graduate School shares the academic disciplines of the Faculty and aims to foster in our students an in-depth understanding of various cultures, logical and critical thinking, and skills in data science such as statistics-oriented analysis methods and computer science. The Graduate School offers four courses: Cultural Resources Studies, Linguistic Data Science, Behavioral Data Science, and Fundamental Data Science. While our students are expected to concentrate on one of the four courses, they are also encouraged to participate in other three courses according to the academic interests or topics they have in mind for their M.A or Ph.D. theses.

Graduate Schools

Graduate School of Science and Engineering

<https://se.doshisha.ac.jp> ▶



JAPANESE ONLY

The Graduate School of Science and Engineering consists of five majors; Information and Computer Science, Electrical and Electronic Engineering, Mechanical Engineering, Applied Chemistry, and Science of Environment and Mathematical Modeling. Each of these majors offers Master's and Doctoral degree programs. Under the guidance of the faculty members with superior research achievement, students are able to engage in the most-advanced research activities utilizing top-level research facilities, such as one of the largest massively parallel evolution simulators in Japan.

The major characteristic is the active exchanges with the society and the promotion of internationalization. Along with the implementation of entrusted researches and collaborative projects sponsored by business enterprises, the Cooperative Graduate School System, which the students are able to receive research guidance by the researchers of private companies and public institutions, has been introduced. The Graduate School has exchange programs with foreign prestigious institutions such as the Group of Ecoles Centrales, France, Universidad Politécnica de Madrid, Spain, Polytechnique Montréal, Canada and the others. Furthermore, our graduate school has a Double Master Degree System with Doshisha Business School for MOT (Management of Technology) education. Students will be awarded two master degrees, MSc / MS.Eng and MBA in the three-year course.

Graduate School of Life and Medical Sciences

<https://biomedical.doshisha.ac.jp/en/overview/concept.html> ▶



To prepare new engineers and researchers using a multidisciplinary approach, the Graduate School of Life and Medical Sciences offers M.Sc./MSE and Ph.D. programs with two areas of concentration. Major of Biomedical Engineering and Informatics concentration of the Graduate School of Life and Medical Sciences provides a multidisciplinary education to prepare professional engineers who will develop innovative future life technologies. The curriculum focuses on electrical and mechanical engineering as well as information technology, and offers diverse perspectives to foster next-generation engineers.

Major of Medical Life Systems concentration of the Graduate School of Life and Medical Sciences offers diverse graduate curricula that lead to M.Sc. and Ph.D. in Science. This multidisciplinary education prepares students for a career as a professional researcher in fields that require specialized knowledge of basic medical sciences and technology.

Graduate School of Health and Sports Science

<https://sports.doshisha.ac.jp/graduate> ▶



JAPANESE ONLY

Sports have been widely recognized to have the important role, in order to improve quality of life in the present society. The persons who contribute to improve health and social development in sports and have specialized knowledge and practical theory in the health and sports science are required eagerly. The aim of the Graduate School of Health and Sports Science is to respond to such social demand and to produce researchers, educators and professionals possessing a high-level technical knowledge and theory of the health and sports science area. Furthermore, they will be requested to show good leadership in various and broad fields in the society.

The Graduate School of Health and Sports Science offers M.S. and Ph.D. programs. Following three main academic fields covering from a gene to a human body and the society are available: 1) Health Science 2) Training Science 3) Sports Management. The education and research system learning across various academic fields that related to health and sports science, such as medical, engineering, psychological and others are also available.

Graduate School of Psychology

<https://psych.doshisha.ac.jp/english> ▶



The mission of the Graduate School of Psychology at Doshisha University is to promote integrated learning of advanced knowledge and skills in psychology research and practice. The school offers well-balanced programs both in fundamental and clinical domains, with an emphasis on an empirical understanding of mind and behavior.

The Psychology Course is dedicated to training of researchers in both academic and applied areas. The Clinical Psychology Course seeks to produce mental health professionals based on a scientist-practitioner training model. One of the distinguishing features of the school is that it pursues its courses of education and research in close collaboration. We encourage students to appreciate training in scientific research as a prerequisite for practice in applied settings, and real life issues as manifestation of the laws of the mind.

In both courses we strive to produce skillful, human resources that can contribute to the development of healthy minds, predict and prevent the problems of modern life, and aid in carrying out solutions to complex problems. Students that complete the graduate degree programs can be expected to have a broad range of opportunities for productive careers in diverse fields such as education, the judicial system, public administration, health care, and industry.

Graduate School of Global Studies

<https://global-studies.doshisha.ac.jp/en> ▶



Doshisha University's Graduate School of Global Studies (GSGS) is an independent graduate school launched in April 2010 in response to the pressing urgency of issues such as transnational migration, refugee flows, regional conflict and the environment. Solving such large-scale problems requires a combination of regional and global perspectives, and a willingness to use multiple perspectives from the humanities and social sciences. Consequently the GSGS brings to bear both regional and global expertise ranging across an array of disciplines to address pressing issues in the world today.

Rather than pursuing vague generalizations, GSGS encourages students to pursue focused research projects that investigate how individual case studies help illuminate broader global trends. GSGS particularly promotes studies that cross disciplines and national boundaries and that search for larger connections. As a result, GSGS seeks students with a clear focus, research agenda, and willingness to challenge the limits of any one discipline or approach. Master's and doctoral students belong to one of the following three clusters:

- American Studies Cluster
- Contemporary Asian Studies Cluster
- Global Society Studies Cluster

Graduate School of Brain Science

<https://brainscience.doshisha.ac.jp/en> ▶



Our brains underlie the uniqueness of human beings. Understanding how the brain works is therefore one of the most important problems in the science of nature and the mind. The outcomes of brain science research will also provide insight into how we treat/prevent neurological and mental disorders, and ultimately how we educate our children. In this regard, research in brain development and aging is significant not only to academia but also to our entire society. We therefore perceive the urgency of fostering young scientists who can lead and push this research field forward.

Our program faculty consists of internationally renowned scientists in molecular, cellular, systems, and pathological neuroscience. Their research interests include the mechanism of neurotransmission, ion channels/transporters, neural development, neural circuits, cognition, functional brain circuit construction, neurocomputation, neuronal regeneration and neuropathology. The five-year training program revolves around these excellent research programs to foster next-generation scientists.

To achieve this goal, we encourage students to develop their abilities in critical thinking, problem and goal setting, and professional communication in addition to scientific knowledge and research techniques. We believe that acquiring these merits will help them excel and become true leaders not only in brain research but also in any areas of problem - solving.

Law School

<http://law-school.doshisha.ac.jp/en> ▶



Doshisha Law School opened in April 2004 and offers a rigorous program featuring lectures, small group seminars and active participation by students in classroom discussions. The teaching staff includes renowned scholars and experienced legal practitioners.

For the 2024 academic year, 71 students have been granted admittance to the law school. Of these, 52 students who demonstrated an adequate foundational knowledge of law entered a two year program, with another 19 being admitted to a three year program that assumes no knowledge of law at all and makes the legal profession accessible to people from different backgrounds.

Foreign applicants are welcome to apply, and the law school has a special admissions track for foreign students. To complete the Law School program, the students need to be able to speak, read and write Japanese at a graduate-school level.

Graduate School of Business

<https://gmba.doshisha.ac.jp/en> ▶



Doshisha Business School (DBS) opened in 2004 following a long tradition of successful Kyoto based global corporations including Omron, Kyocera, Nintendo, and Shimadzu. Our English-language Global MBA was inaugurated alongside the school's Japanese MBA in 2009, and following five successful years was strengthened as an independent Global MBA (formally renamed Global Business and Management Studies) program in 2014 with a bolstered dedicated faculty and expanded course offerings. Global by nature, we welcome applications from aspiring and inspiring individuals regardless of gender, ethnicity, nationality, or religion, and to date have welcomed over 400 students from 92 countries.

At DBS, we apply the principles of "education guided by conscience" and internationalism to the challenges and opportunities of today's world to provide a business education that will prepare students to manage successfully and make a difference in the business environment of the 21st century.

DBS encourages students to capitalize on being in Kyoto with its historic network of innovative and creative industries and global corporations by presenting students with opportunities to work in partnership with professors and local and multinational business leaders. Our combination of theory and practice makes DBS the ideal environment to explore and expand the horizons of sustainable development and cross-cultural management. DBS invites you to experience the future of global business management in Kyoto. DBS obtained international accreditation for its MBA Program from AMBA in October 2023.

Degree Courses and Programs Offered in English

	Area of Study	Name of Faculty / Graduate School
Undergraduate Programs	Japanese culture, society, economy, business, law and politics	The Institute for the Liberal Arts (Liberal Arts Program)
Graduate Programs	Information and Computer Science Electrical and Electronic Engineering Mechanical Engineering Applied Chemistry Science of Environment and Mathematical Modeling Biomedical Engineering and Informatics Medical Life Systems	International Science and Technology Course
	Business Management Doshisha Business School	Global MBA Master's Degree Program, Global Business and Management Studies Doshisha Business School
	American Studies Global Society Studies	Graduate School of Global Studies

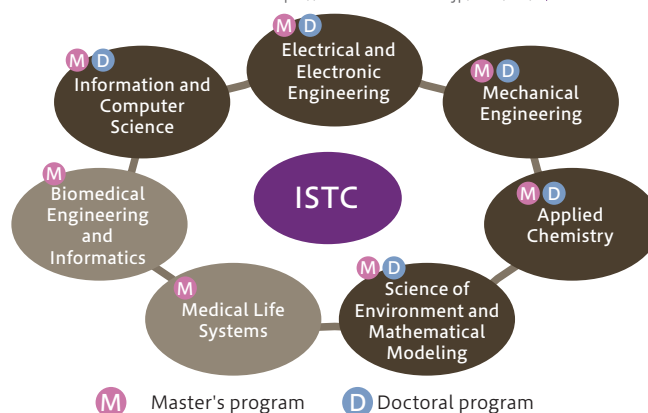
International Science and Technology Course (ISTC)



<https://istc.doshisha.ac.jp/istc/en/>

ISTC is established by the Graduate School of Science and Engineering, and the Graduate School of Life and Medical Sciences, aiming to nurture students who can achieve a leadership role in the global world with the Japanese technology management skills and language proficiency.

All classes necessary to obtain a degree are taught in English as well as elective classes for learning Japanese language and culture. Students who are fluent in Japanese are also eligible to take additional courses taught in Japanese for the further development of their technological knowledge and techniques. Furthermore students can take an internship program to work at Japanese industries in Osaka, Nara, Kyoto and Kansai Science City where Kyotanabe campus is located.



The Institute for the Liberal Arts (ILA)



<https://ila.doshisha.ac.jp/ila/en>

ILA offers a four-year degree program exclusively in English. Students begin by studying broadly across the humanities and social sciences. They can then specialize or combine courses while mastering methodologies and research skills for comparative analysis, gaining an in-depth knowledge of Kyoto, the Kansai region, Japan, and the wider world.

The concentrations offered are as follows: Japanese Society and Global Culture (which combines History and Anthropology); Japanese Business and the Global Economy (Business and Economics); or Japanese Politics and Global Studies (Politics and International Relations). While studying their chosen subjects, students have the opportunity to study the Japanese language at any level from beginner to advanced.

The curriculum encourages critical thinking, analysis, intensive

reading, and discussion. The Institute faculty members challenge students to formulate and ask intriguing questions in an interdisciplinary mode of inquiry.

Students have flexibility in choosing from a wide range of classes offered in English at the ILA as well as in Japanese and English throughout the University.

Students also have the opportunity to spend a year abroad at one of Doshisha's many partner universities via a competitive application procedure or to intern in Kansai-based companies, NGOs, or with local politicians.

In the contemporary global world, regional knowledge, international experience, language proficiency, and work experience will help ILA graduates stand out from the crowd.

Global Resource Management (GRM)



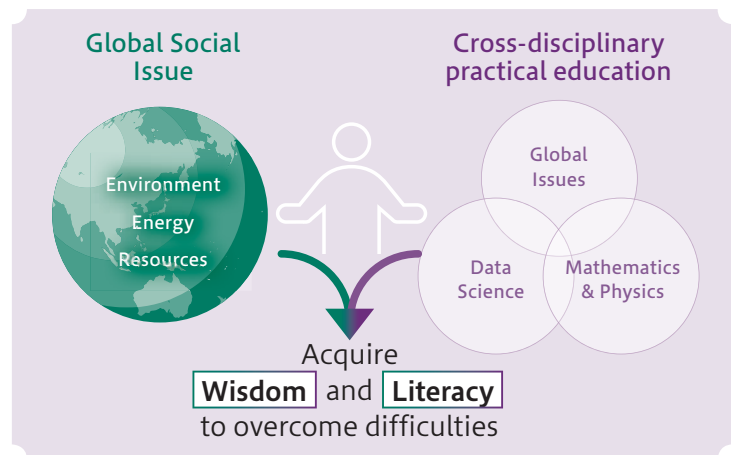
<https://grm.doshisha.ac.jp/en/>

GRM is an education program for graduate students of various backgrounds and nationalities to study together in English.

The GRM program nurtures : "Con Engineers and Innovators" who not only have the skills to apply science and make it useful in human life, but also have "Wisdom" that combines science and technology, as well as "Conscience" to support people.

Features of Global Resource Management Program

1. Acquire "Wisdom" and "Literacy" to overcome difficulties
2. Learn on the field and learn from the field
3. Study in English with students of different backgrounds
4. Leads to post-graduate career development



Inbound Programs

Center for Global Education and Japanese Studies



<https://www.doshisha.ac.jp/en/international/cgj/index.html>

Drawing on our long history and extensive experience of hosting international students from partner universities, Doshisha University opened the Center for Global Education and Japanese Studies (CGJ) in April 2024 as a new receiving body for non-degree international students. CGJ is a reorganization of two centers that originally hosted international students – the Center for Global Education (CGE) and the Center for Japanese Language and Culture (CJLC) – and is taking over the missions carried out by the two centers. CGJ offers two modules of study.

■Global Education Module (GEM)

The Global Education Module (GEM) offers a curriculum designed to provide in-depth learning opportunities in a wide range of academic fields encompassing the humanities, social sciences, and natural sciences.

A distinctive feature of the GEM curriculum is that international exchange students and Doshisha degree students study together in the same classes. All courses are taught in English and students learn interactively through group work and discussions, benefiting from the diversity of perspectives that are presented and shared in the classroom. Courses are conducted in small-sized classes, which enables students to interact and communicate thoughtfully while cultivating independent thought based on thorough understanding of the opinions of others. Academic collaboration in the classroom encourages students to think constructively and critically together about shared topics of concern from a global perspective.

■Japanese Language and Culture Module (Nichibun)

The Japanese Language and Culture Module (Nichibun) offers an intensive Japanese language curriculum that helps students to improve their Japanese language skills. Japanese language courses are divided into 9 different levels, from elementary to high advanced, enabling students to take courses that fit their Japanese level in small-sized classes. We offer an intensive course for students who wish to focus on learning Japanese language, while an elective course is provided for students whose main purpose of study abroad is not learning Japanese. This allows students to learn in accordance with the purpose of their study in Japan.

In addition, lecture courses in Japanese Studies and International Studies are offered to deepen students' understanding of Japanese culture and society, and to promote international understanding. Lecture courses in this module include courses taught in English, Chinese or Korean. In some courses, international exchange students and Doshisha degree students study Japanese culture and tradition together in the same classroom.



Scholarships

Most of our international students receive some sort of scholarships - some from Doshisha, some from other organizations like JASSO (Japan Student Services Organization) and MEXT (Ministry of Education, Culture, Sports, Science and Technology). Below is a figure of "Doshisha University Merit Scholarships for Self-funded International Students".



Doshisha University Merit Scholarships for Self-funded International Students

Graduate Students

Ratio of Recipients in Each Category:

- Category S → approx. 20 to 30% of international students
- Category A → approx. 30 to 40% of international students
- Category B → approx. 40% of international students

- * The number of recipients varies according to each graduate school.
- * The reduction rate is determined by considering such factors as entrance examination results and research plans.

Undergraduate Students

Ratio of Recipients in Each Category:

- Category S → approx. 10% of international students
- Category A → approx. 20% of international students
- Category C → approx. 30 to 60% of international students

- * Please check the University website for the amount of scholarship by faculty.
- * A full tuition will be charged to approximately 10 to 40% of international students.
- * The number of recipients varies according to each faculty or course.
- * The reduction rate is determined by entrance examination results.

- * Duration of scholarship for graduate students and undergraduate students is two years after admission (renewable for up to the standard number of years required for graduation in students who meet certain standards of academic performance). In being renewed, the reduction rate may be changed depending on academic performance.

- * The Admission Fee, the Facilities Fee, and the Academic Association Fee are not included.

<https://ois.doshisha.ac.jp/ois/en/scholarships/merit.html>



International Cultural Exchange Event

SIED (Student Staff for Intercultural Events at Doshisha) is a student organization that hosts various types of intercultural events under the Office of International Students. On Imadegawa and Kyotanabe campus, there are about 76 staff members who create opportunities that local and international students learn about cultures of one another, deepen their understanding toward different perspectives, and harvest a lasting friendship. Their past events include Kyoto city tours,

Japanese cultural workshops, and cultural and historical presentations by international students. If you are interested in getting firsthand experience on Japanese culture or in sharing your own culture, come and join SIED events!

https://ois.doshisha.ac.jp/ois/en/international_exchange/sied.html

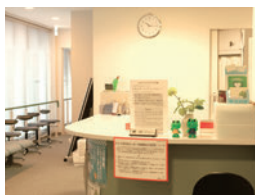


Student Support

■ Health Center

Health Centers are located on both the Imadegawa and Kyotanabe campuses to help maintain the physical and mental health and to provide students with support.

We offer such services as annual health examinations, health maintenance in the form of reexaminations and illness management, health consultations, psychiatric consultation, and internal medical consultation.



<https://health.doshisha.ac.jp> ▶



JAPANESE ONLY

■ Counseling Center

Counselors work with students to maximize their ability to understand and resolve problems, including concerns about interpersonal relationships on campus, personality and psychological and mental health issues, as well as decision-making over one's future.



<https://www.doshisha.ac.jp/en/students/healthcare/counseling.html> ▶



■ Support for Students with Disabilities

Accessibility Support Office for Students with Disabilities (hereinafter SDA Office) serves to help students with physical, mental or developmental disability through individual consultations on what reasonable accommodation can be provided for the student to be able to take courses under the same conditions as other students regardless of the type of disability. For details, see the English version of the pamphlet introducing the SDA Office.

Feel free to also visit the SDA Office website for more specific examples (including videos) of types and details of possible support (information available in Japanese only).



https://www.doshisha.ac.jp/en/student_life/s_support/challenged.html ▶

■ IT Support Office

Doshisha University's Academic Information Network System provides a secured high-speed, high-capacity connection, gigabit Ethernet, and linking facilities throughout its campuses. Available services include Wi-Fi, eduroam (world-wide roaming access service) connections, VPN connections, SSO (Single Sign-On service), Microsoft 365 (e-mail service, cloud storage, etc.), a remote Desktop service (connect to an on-campus Windows computer) and so on.

In terms of the Internet connection, Doshisha University is available to connect "SINET6". It is one of the world's fastest networks for research and education. Doshisha University maintains about 2,100 high-performance computers for student use in computer classrooms and open computer labs, and about 300 laptop computers called "DoKoDeMo PC". All computers are connected to a high-speed, high-capacity gigabit network to streamline the use of all manner of educational and research data. In addition, cutting-edge facilities such as the Multimedia Lounges offer a wide array of tools, including

3D printers, for students to try their hand at everything from studio recording and video editing to designing websites filled with visual effects.

Doshisha University has an EES (Enrollment for Education Solutions) agreement with Microsoft, which provides all regular students with access to popular Microsoft software products such as Office, etc. These software products can be installed on every eligible student's own computer without charge.

Doshisha University not only provides cutting-edge Cloud Services, ICT systems and facilities, but also tries to improve educational support through various ICT tools and services.

<https://it.doshisha.ac.jp/it/> ▶



JAPANESE ONLY

■ Library

There is one main library in each campus, Imadegawa Library (Neiseikan) and Learned Memorial Library (Kyotanabe), and other various faculty libraries and centers are also available to students.

Both main libraries have plenty of materials, including multimedia resources such as DVDs and audiodiscs. Students can also access a wide range of resources from the Doshisha University Library website, which guides them to the online library catalog "DOORS" (Doshisha Online Retrieval System), Academic Repository, e-books, e-journals and databases.

Library staffs are on hand at the reference counter to answer questions or offer advice on how to search for relevant literature and materials. Variety of training sessions and workshops to help students promote effective library research skills, including search strategies to find information from a variety of resources. Through a broad spectrum of services aimed at supporting studies, the libraries strive to provide an environment where each and every student can constructively focus on studying.

<https://library.doshisha.ac.jp/library/en/index.html> ▶



■ The Learning Commons

The Learning Commons is a place for active learning where students can discover knowledge and inspiration through a variety of new encounters with people, technology, information, and other things. Full of open, flexible spaces that can be adapted to fit a wide variety of needs, the Learning Commons is designed to encourage new encounters and collaboration. Here students can find knowledgeable staff who can help them transform their ideas into reality. At Imadegawa Campus, the Commons is located in Ryoshinkan, a building where many undergraduate classes are held. Students can easily drop by between classes to get advice from dedicated staff members, do group work with others, and more. At Kyotanabe Campus, it is located conveniently in the Campus's main library, Learned Memorial Library. Students have easy access to the library resources while they work on their research and class projects in the active learning area.

Shinmachi Campus also has Academic Plaza, a learning space for students who study and do group work.

<https://ryoshinkan-lc.doshisha.ac.jp/en> ▶



Foreign Institutions at Doshisha

Several overseas centers of our foreign partner institutions are housed on our campus.

The Associated Kyoto Program (AKP), a study abroad program founded at Doshisha in 1972, is sponsored by a consortium of thirteen American liberal arts colleges such as Amherst College, Pomona College, and Smith College.

The Tübingen Center for Japanese Studies at Doshisha University (TCJS) was established on the Imadegawa campus in October 1993 as the first German university-affiliated institute in Japan.

The Stanford Program in Kyoto, established in Kyoto by Stanford University in 1989, was relocated to Doshisha in 2006.

The Kyoto Consortium for Japanese Studies (KCJS), a consortium of thirteen American universities, such as Harvard University, Princeton University, Yale University, and Columbia University, was established in 1989.

Associated Kyoto Program (AKP)

<https://www.associatedkyotoprogram.org/>



Tübingen Center for Japanese Studies

<https://www.kyoto.uni-tuebingen.de>



Stanford Program in Kyoto

<https://undergrad.stanford.edu/programs/bosp/explore/kyoto>



KCJS (Kyoto Consortium for Japanese Studies)

<https://www.kcjs.jp/>



Outbound Programs

■ Summer and Spring Program (1 month)

Intensive overseas language programs during summer in Australia, Canada, China, England, France, Germany, Ireland, Korea, Mexico, New Zealand, the Philippines, Russia and U.S., and during spring in Australia, Canada, China, England, France, Germany, Korea, New Zealand, the Philippines, Spain and U.S., are available as part of the regular undergraduate programs elective.

With study in the respective countries taking place during the summer or spring vacation, each of them includes preparatory classes at Doshisha in the semester preceding each program. Summer and Spring Programs are designed to develop the students' language skills to an advanced level in conjunction with other foreign language subjects, as well as to deepen the students' understanding of the culture and society of the country they visit through everyday-life experiences, staying either on homestay or in a dormitory.

■ Semester Program (4 months)

Semester Programs are intensive English language program held in Fall semester at overseas institutions. Spending approximately four months at Deakin University in Australia, University of Winnipeg in Canada or University of Hawai'i at Manoa in the U.S., participating students will improve their English skills as well as having a better understanding of the culture and society of the respective countries. In addition to the language courses, homestay experience or dormitory experience gives the students an opportunity to feel the cultural difference first hand, which will further increase their interest in foreign cultures.

■ EU Campus Program (5 months)

Doshisha EU Campus at Tübingen University (UT) in Germany serves as a hub for our activities in the area of education and research not only in Germany but all of Europe. Currently there is one program for each semester.

"Doshisha EU Campus German Language and Intercultural Studies

Program" is held in Spring semester and it consists of an intensive German language courses, joint seminar of intercultural studies and EU Campus Special lectures.

The other one "Doshisha EU Campus European Studies Program" is held in Fall semester and it consists of subjects provided by Tübingen International and European Studies at UT and by faculties of Doshisha.

Spending approximately five months at EU Campus, participating students will improve their language skills as well as achieving better understanding of European developed approaches and facing issues by studying together with students of UT.

■ Student Exchange Program (6-12 months)

Through this program, Doshisha students are able to choose their destination of study abroad from 176 partner institutions in 37 countries and regions all over the world for either one academic year or one semester. Every year, many highly motivated students participate in this program and gain invaluable experience and a broader international perspective.

Many students participate in exchange programs each year, and in response, we have expanded the number of partner institutions and exchange slots.



Organization for Research Initiatives and Development

Organization for Research Initiatives and Development is created in order to establish the university as a base for advanced interdisciplinary research, and to provide broad support for research activities.

The organization which is comprised of numerous groups and shared facilities for advanced research, returns the benefits of research activities to the educational field, and contributes to society as a whole.

<https://research.doshisha.ac.jp> ▶



■ Base for Advanced Education and Research

It is organized by Institute for cutting edge education and research and core research center.

- Research Center for Energy Conversion System
- Doshisha-Daikin Next Environment Research Center

■ Research Centers

The goal of these Research Centers is to open up new directions in modern applied research, and at the same time to foster young researchers through ties to research and education at the University's Graduate Schools.

Many of the full-time faculty members from Doshisha University are active as researchers at the various Research Centers, which also welcome eminent researchers from Japan and around the world as guest fellows. In this way, the Research Centers are able to strive for the world's highest standards.

- Center for Interdisciplinary Study of Monotheistic Religions [CISMOR]
- Institute for Technology, Enterprise and Competitiveness [ITEC]
- Life Risk Research Center
- Center for Baby Science
- Higher Education and Student Research Center
- Center for Korean Studies
- Mobility Research Center
- Research and Development Center for Advanced Composite Materials
- Research Center for Nano-Bioscience
- Center for the Study of the Creative Economy
- The Amami-Okinawa-Ryukyu Research Center
- Medical Ultrasound Research Center
- Research Center for Highly-functional Nanoparticles
- Research Center for Kyoto and Tea Culture
- Advanced Biomaterial Research Center
- Center for the Study of Conscience
- Center for Wing of Empirically Supported Treatments (WEST)
- Feminist Gender Sexuality Studies Center (FGSS)
- Center for Study of South China Sea
- Advanced Powertrain Research Center
- Research Center for International Transactions and Law [RECITAL]
- Research Center for Well-being
- Research Center for Space and Medical Sciences
- Bio-Microfluidic Science Research Center
- Research Center for Science, Technology and Social Communication in Next Generation
- International Infrastructure System Research Center
- Research Center for Knowledge Science in Cultural Heritage
- Applied Ultrasonics Research Center
- Research Centre for Small Business Management
- Sports Medicine & Science Research Center
- Sports Injury Prevention Research Center
- Latin America Studies Center
- Center for Research in Neurodegenerative Diseases
- Artificial Intelligence Engineering Research Center
- Research Center for Linguistic Ecology
- Work Environment and Science/Technology Research Center
- Research Institute of Sport Management
- Research Institute for STEM Human Resources
- Self-organization Science Research Center
- Research Center for Human Dignity
- Center for Behavioral Neuroscience
- Research Institute for Mechanobiology
- Research Center for Comparative Consumer Law and Policy in the Digital Society
- Center for the Development of Educational Materials on Classical Japanese Literature
- Research Center for the Protection of Cultural Properties
- Inclusive-BOSAI Research Center
- Center for the Study of the Court Culture
- Research Center for Law and Social Policies
- The Social Marketing Research Centre
- Center of Youth Studies
- AI×Humanity Research Center
- Research Center for Regional Conflicts
- Research Center for Multiculturalism and Intersectionality in Complex Cities
- Journalism, Media & Archives Research Center
- Value Research Center
- Acoustic Navigation Research Center
- Diversity Research Center
- Research Center for Cell Protection and Regeneration Systems
- Center for Transimperial History
- Social Survey Research Center
- Research Center for Drug Development Against Fire Gas Poisoning
- Research Center for Biopathology and Regenerative Medicine
- Sports Sensing Research Center
- Research Center for Science Communication
- Data Science Research Center
- Research Center for Smart Electromagnetic and Electric Systems

■ Endowed Education Research Project

Endowed Education Research Project, which operate based on grants from individuals, corporations, companies, and other external organizations, are established with the goal of contributing to the vitality and diversity of research and education activities at Doshisha University. Unique courses and open classes are also offered as part of these projects in the form of “Endowed Courses.”

- Anti-aging Medical Research Center
- Glycative Stress Research Center
- MBA Educational Function Enhancement Project through Industry-Academia Collaboration



A debriefing session by students who participated in the internship at SCREEN Holdings Co., Ltd. as part of the project of MBA Educational Function Enhancement Project through Industry-Academia Collaboration.

■ Division of Research Initiatives

The Division of Research Initiatives is to attain the intensification of the research capacity at Doshisha University. In order to put it into practice, it is essential to keep the accurate picture of the surrounding environment of the research activities. The division does the factual investigation, analysis, and evaluation on the trend of research activities. Also it reviews and gives proposal on the research strategy while regulating the nurture of researchers who would bear the future.

■ University Industry Liaison Office

The Liaison Office acts as a bridge linking Doshisha University, industry, the national government, local governments, and the local community. The aim of the office is to make available the rich intellectual and research resources of the faculty and staff to the public, and thereby collaborate with civic society in a wide range of areas. The office also aims to serve as a base for creating new industries and businesses while further implementing interdisciplinary joint projects between industry, government and academia.

■ Intellectual Property Center

The Intellectual Property Center supports the creation of intellectual property at the university, such as the results of educational and research activities. The center aims not only to protect and increase such intellectual properties, but also to contribute to society by making them available to society for public use and benefit.



Research Institutes and Centers

■ Center for Christian Culture

In order to realize the founding philosophy of education at Doshisha University, the Center for Christian Culture, on both Imadegawa and Kyotanabe campuses, offers a variety of programs for students and staff, as well as for interested people from outside the university. The programs include the following:

Chapel Hour

Three days a week at both campuses

Doshisha Spirit Week

One week per semester

Doshisha Kyotanabe Advent Worship Service

Second Thursday in December

Christmas Eve Worship Service

Around Christmas Eve at both campuses

■ Harris Science Research Institute

The study of science and engineering at Doshisha has a long tradition with origins traceable back to the Harris Science School. Joseph Hardy Neesima, who studied natural science at Amherst College, founded the school in 1890, believing that the promotion of science and engineering was necessary for Japan's modernization. Building on this tradition, the Science and Engineering Research Institute was established in 1959 to promote studies of basic science and engineering as well as mathematics, physics, astronomy, medical science, earth science, history of science and creative engineering. The main areas of research recently have been in the fields of environmental, biomedical, mathematical, and related studies. In 2015 the name of the research institute was changed to the Harris Science Research Institute. The research findings are published in the institute's own bulletin which is widely distributed in Japan and abroad.

■ Institute for Study of Humanities and Social Sciences

The Institute was established as the Doshisha University Research Institute in 1944, and in 1957 renamed as the Institute for Study of Humanities and Social Sciences for the purpose of promoting theoretical, historical and applied studies in the fields of humanities and social sciences, contributing to academic research in Japan.

The Institute's main functions are the following;

1. Developing interdisciplinary research programs
2. Publishing ongoing research projects in periodicals and books
3. Arranging open lectures and symposiums
4. Collecting and arranging various research materials related to humanities and social sciences, and making them available to the faculty, students, and the general public.



■ International Institute of American Studies (IIAS)

IIAS at Doshisha University was established in 1958, growing out of the Kyoto American Studies Summer Seminar, a joint program with the American Center at Kyoto University. Since then, IIAS has been conducting research in a wide range of academic disciplines regarding the United States of America, and providing a variety of resources to the public. IIAS is one of the finest research institutes focusing on American Studies in Japan, dedicated to creating and sharing transformative ideas across the humanities and social sciences. IIAS also hosts public lectures in the spring and fall of every year, and sponsors lectures and symposia, inviting distinguished guests, both Japanese and non-Japanese.

■ Doshisha University Historical Museum

The Museum was established in 1996. We have over 1,200,000 cultural resources as archaeological artifacts, historical documents and traditional folk goods. Our first task is museum curation. We have academic exhibitions at our exhibition rooms of both Kyotanabe and Imadegawa campus and have over 40,000 visitors as a total every year. Second task is the archaeological and historical academic survey. Most of the exhibits and stored cultural resource have been from our academic excavations by archaeological department and rescue survey of archaeological sites at our campus. The main theme of our survey is the history of Kyoto and Japanese tradition. And as third task, we serve several student workshops for curatorial education course and other lectures of archaeology and Japanese history. Through such various activities of exhibition, academic survey and education, we contribute to our university.

■ Doshisha Archives Center

The Center was established in 2004 as the successor of the previous Archive, which was founded in 1963. The purpose of the Center is to collect, organize, preserve, and utilize historical materials related to the founder Joseph Hardy Neesima and Doshisha schools. Thereby, the Center succeeds those materials on the history and traditions since the founding to the following generations and contributes to the activities and improvement of Doshisha's education. According to this purpose, we publish research journals, hold workshops, make exhibitions at Harris Science Hall Doshisha Gallery (permanent and special exhibitions), and conduct public lectures. By this, the Center aims to raise awareness about Doshisha's history and the spiritual legacy.

■ European Info (EU i)

European Information Center (EU i) in the Imadegawa Library has been specified by the European Commission as information centers specialized in bibliography related to European integration. European Information Centers (EU is) are located at 500 universities worldwide. Many of them are in member states of the EU, however, in addition to the National Diet Library, which is the EU's Depository Library, 18 EU is are situated at universities in Japan. Doshisha University European Information Center has provided information about EU as the third EU i in Japan since 1976. At Doshisha University, the EU i undertakes activities such as showing European movies at its annual EU-Japan Friendship Week, for understanding of each other's society and culture.

* Doshisha University European Information Center is closed and unavailable for the time due to the rebuilding of Imadegawa Library.

Directory of Academic Staff

School of Theology

Department of Theology

Ada Taggar-COHEN
Jewish Studies - The Hebrew Bible and Ancient
Near Eastern Studies

ECHIGOYA Akira
Old Testament Studies, Biblical Archaeology

KATSUMATA Etsuko
Rabbinic Literature, Jewish History, Jewish
Thought

KITANI Kanan
Contextual theology, Environmental theology,
Ecumenism

KOHARA Katsuhito
Christian Thought, Religious Ethics, Comparative
Study of Monotheistic Religions

KUROYANAGI Yukihito
Old Testament Studies, Christian Art

MIYAKE Takehito
Sociology of Religion, Philosophy of Religion

MIWA Chishio
History of Christianity in Japan, History of
Kirishitan

MORIYAMA Teruaki
Islamic History, Formation and Development of
the Muslim Society

MURAKAMI Mika
History of Modern Christianity, Reformation

MURAYAMA Moriyoshi
New Testament Study and Early Christianity

NAKANO Yasuharu
17th-18th Century British and North American
Theology, Quaker Studies

SEKIYA Naoto
Practical Theology

Faculty of Letters

Department of English

AKAMATSU Nobuhiko
Applied Linguistics, Psycholinguistics, TESOL

David John CHANDLER
British Literature and Culture 1780-1850

ENGETSU Katsuhito
Modern Poetry in English, Christian Literature

ENJO Yuri
Early Modern English Literature and Education

ISHIZUKA Noriko
19th and 20th Century American Literature

KANATSU Kazumi
British Romanticism

KANAYA Masumichi
19th- and 20th-century British novels

KATSUYAMA Takayuki
British and American Theater and Film Studies

KAWASHIMA Takeshi
Nation and Gender and 20th Century British /
American Theatre

KIDA Shusaku
Applied Linguistics

KIKUTA Chiharu
Syntax and Semantics of English and Japanese,
Cognitive Linguistics

KIRIYAMA Keiko
Nineteenth - Century British Literature and
Culture

Mark RICHARDSON
American Literature, Poetry

MCGUIRE, Michael Paul
Spoken fluency, multi-word sequences, elicited
imitation, automatic speech recognition,
data-driven learning, corpus tools.

NOTOHARA Yoshiyuki
Applied Linguistics, Corpus Linguistics

ONUMA Yu
Reception of Classical Literature in the Middle
Ages

SAITO Sayo
19th and 20th Century American Literature

SHIMOKUSU Masaya
Irish literature, fantastic literature

SHIRAKAWA Keiko
Race and Ethnicity in American Literature and
Culture

Stefanie Alexa STADLER
Intercultural Communication, Pragmatics,
Discourse Analysis

SUGAHARA Mariko
Phonology and Phonetics of English and
Japanese

SUGIURA Hideyuki
Conversation Analysis, Language and Gesture

TAKITA Kensuke
Generative Grammar/Comparative Syntax

TANAKA Takako
Applied Linguistics, L2 Motivation

USUI Masami
Diversity in English-written Literature

YAMABE Shota
Twentieth-Century American Literature and
Culture

Department of Philosophy

ATARASHI Shigeyuki
Various Aspects of Empiricism

HATTORI Yukihito
19th and 20th Century French Philosophy

HAYASHI Katsuki
Kantian Philosophy, and the Problem of
Metaphysics

ISHIDA Ryuta
European Medieval Philosophy and Thought

KITO Yoko
Contemporary Anglo-American Philosophy,
Ethics and Theology

NAKAGAWA Akitoshi
Classical German Philosophy

NAKAMURA Takuya
German Philosophy (Phenomenology)

OGAWA Takeru
The epistemology in logical positivism and
philosophy of care

Department of Aesthetics and Art Theory

DATE Tatsuki
Interaction between Poetry and the Plastic Arts

ECHIZEN Toshiya
Art and its Acceptance since 20th Century

KONO Michifusa
Chinese art history

MAEDA Tomomi
Art and Culture in Vienna at the end of the 19th
Century

MORITA Dan
German Aesthetics in the Early 20th Century

OAI Takaharu
Western Music in the Renaissance and Baroque
Era

SATOW Morihito
Visual Culture and Media in Modern/
Contemporary Japan

YOSHIDA Tomoko
Western Art History, especially Art in
Eighteenth-century France

Department of Cultural History

ABE Toshihiro
European Medieval History, Cultural Studies in
the Mediterranean

HATTORI Osamu
Modern German History, Social History of
Medicine

HORII Yutaka
Medieval and Early Modern Islamic History,
History of the Relations between the Middle East
and Europe

INOUE Kazutoshi
The Buddhist Art of Japan

JOHCHI Takashi
The History of Chinese Political Culture in Ming
and Qing Dynasties

KAJI Kosuke
Book Culture in Edo Period and the Image of the
Japanese Emperor

KAWAGUCHI Tomoko
Japanese Modern History, Urban History

KISHIMOTO Kota
Ancient Greek History

KITA Yasuhiro
Ancient History and Cultural History in Japan

KOBAYASHI Takehiro
Japanese Modern Social History, History by
region, Public History

MIZUNOE Kazutomo
The Japanese Archaeology and The Protection of
Buried Cultural Property

ONO Naoko
American Social History

SANO Shizuyo
Historical Geography on Japanese Wetlands

Directory of Academic Staff

YAMADA Toru
Political, Social and Cultural History of Medieval Japan

Department of Japanese Literature

FUJII Toshihiro
Historical Research of Japanese

IWATSUBO Takeshi
The Tale of Genji

KAKIMI Shuji
Study of Japanese Ancient Literature such as Manyoshu and Kojiki

KATO Hiroki
The Study of Japanese Modern Literature, Literary Theory and Criticism

MIYAKE Hiroyuki
Study of Romance Fictions in the Edo Period

NISHIKAWA Atsuko
The study of Japanese Modern Literature, Fantastic Literature, Textual Analysis

OYAMA Kazuya
Study on Waka Poem in Edo Period

SASAO Kayo
Japanese Modern Literature, Cultural Studies

SEZAKI Keiji
Japanese Modern Literature, Cultural Studies

UEKI Tomoko
The Study of Japanese Ballads and Songs in the Middle Ages

YAMAMOTO Sawako
The Study of Historical Change in Medieval Japanese ;Grammar and Word Formation

YANAGAWA Hibiki
The Study of Japanese Sinitic Literature in Heian and Kamakura Periods

Faculty of Social Studies

Department of Sociology

FUJIMOTO Masayo
Sociology of Work

ITAGAKI Ryuta
Cultural Anthropology, Social History of Modern Korea

KOBAYASHI Hisataka
Study of Social Attitudes

KUTSUWADA Ryuzo
Sociological Study of Localities and Globalization

MORI Chikako
Transnational Sociology, Urban Sociology

OJIMA Fumiaki
Sociology of Education, Social Stratification

TATSUKI Shigeo
Sociological Study of Disasters

UKAI Kozo
Sociological Theories, Social Networks, Historical Sociology

Mattias VAN OMMEN
Cultural Anthropology, Digital Culture and Society

Department of Social Welfare

GUO Fang
Elderly Welfare, Service Assessment

HIRONO Shunsuke
Historic study of people with disability

KANG Minho
Child and Family Welfare / Social Work Practice

KIHARA Katsunobu
History and Philosophy of Social Welfare; Social Work in Mental Health

KOYAMA Takashi
Social Work

KUGA Hiroto
Social Work Practice

Martha MENSENDIEK
Multi-cultural Social Work / International Social Work

NAGATA Yu
Community Practice, Community Care

NOMURA Yumi
Social Work in Health, Rehabilitation and Mental Health

ONOSHRESTHA Maya
Child and Family Welfare, Welfare Planning Evaluation

SUZUKI Ryo
Social welfare for people with disabilities, disability studies

Department of Media, Journalism and Communications

ABE Yasuhito
Communication, Civic Media, Science & Technology

IKEDA Kenichi
Social Psychology of Communication

ITO Takashi
Journalism Study and Sociology

KATSUNO Hirofumi
Cultural Anthropology (Digital Media, AI, Robot)

KAWASAKI Yoshinori
Media History

MIZUIDE Koki
Media Study of Disaster

OGURO Jun
Journalism, TV Documentary

SAEKI Junko
Interdisciplinary Research on Media and Gender

TAKEUCHI Yukie
The History of the Advertisement, Media, Modern Design and Modern Society

Department of Industrial Relations

AGATA Kenji
Sociology of Occupation

HIGUCHI Junpei
Comparative Human Resource Management and Employment Relations

KAJITANI Shinya
Time Allocation, Health Disparity and Inequality in Productivity

MATSUYAMA Kazuki
Organizational behavior and followership

MITSUYAMA Masako
The Study of Atypical Workers in Japan

MIYOSHI Tsutomu
Industrial relations in workplace and roles of enterprise union

TERAI Motohiro
Long working hours, non-regular employment, D & I laws and policies

UEDA Masashi
The Study of Human Resources Management in Japanese Multinational Corporations

URASAKA Junko
Labor Economics, Education Economics

Department of Education and Culture

CHOI Safa
International History, Migration

KOJIMA Akira
Migration and Education

KOSHIMIZU Yuji
History of Education and Culture in Europe

NAKAGAWA Yoshiharu
Holistic Education & Asian Education and Culture

OKUI Haruka
Transmission and Creation of the Body Technique

William Robert STEVENSON III
Globalization and Education

YAMADA Reiko
Comparative Higher Education, Gender & Education

YOSHIDA Ryo
Transnational Christian History of Japan and the U.S.

Faculty of Law

Department of Law

ARAI Kyo
International Humanitarian Law, International Law

ASADA Masahiko
International Law

FUNATSU Koji
Business Corporation Law

HAMA Shinichiro
Philosophy of Law

HAYASHI Takami
Private International Law

HIGAKI Shinji
Contemporary Issues on Freedom of Speech

HIGA Yoshihide
Western Legal History & Indian Law

HIROTA Hiroshi
Studies on legal practices of global companies
in Japan

IKEDA Naoto
Criminal Law

ISEKI Ryoko
Intellectual Property Law

ITO Yasushi
Corporate Law and Commercial Law

KAINO Michihiro
The Modern Anglo-American History of Legal
Thought

KAJI Yuki
Criminal Procedure

KAJIYAMA Tamaka
Civil Law, Civil Execution Law

KAMATA Kaoruko
Corporate Law

KAMITANI Yu
Family Law in Modern Society

KATSUYAMA Michiko
Government / Parliamentary Studies

KAWAGUCHI Yasuhiro
Company Law, Financial Regulation, Financial
Instrument Transaction Law

KAWASAKI Tomomi
Criminal Law

KAWASHIMA Shiro
Civil Procedure, Evidence, Law of Remedies,
Bankruptcy, Judicial System

KAWAWA Noriko
Contract Law, Tort Law

JIN Chun
Insolvency Law, Chinese Law, Asian Law

KINOSHITA Manako
Sociology of Law, Psychology of Law

KURAMI Tomoaki
Tax Law

KUROSACA Noriko
Environmental Law, Administrative Law

MATSUOKA Chihiro
Constitutional Law, Gender and Law

NAKASUJI Tomoki
Corporate law, Commercial law

NONOMURA Kazuyoshi
Tort Law, Health Care Law

NUMOTO Yuta
Administrative Organization Law

OGINO Nao
Breach of Contract and Liability

OKADA Yukihiko
Civil Procedure

SAIKI Akihiro
Disclosure of Government Information and
Protection of Personal Information

SAKAI Takeo
Social Security Law

SATO Yuri
Criminal procedure, Criminal Justice

SERYO Shingo
Competition Law and International Trade Law

TAKASUGI Naoshi
Private International Law

TANAKA Kenta
Freedom of Religion

TSUCHIDA Michio
Labor and Employment Law

UEDA Seichiro
Comparative Studies of Contract Law Principles

UEDA Tatsuko
Labor Law, Social Security Law

WATANABE Yoshihiro
Labor law and dispute settlement system

YAMADA Satoshi
Criminal Attempts

YAMANE Takakuni
Intellectual Property Law

Department of Political Science

ASANO Ryo
Chinese Politics, International Relations

HASEGAWA Kazutoshi
History of Western Political Thought

ICHIKAWA Yoshitaka
Policy Process, Public Administration, Local
Government and Central-Local Relations

IIDA Takeshi
Political Behavior, Political Methodology

KANEHARA Nobukatsu
Decision making process of Japan's national
security policy and History of Japan's foreign
policy

MOCHIZUKI Shifumi
History of Japanese Political Thought

MORI Hiroki
Political Dynamics in Contemporary Japan

MORI Yasuo
Political History of Modern Japan

MORISHITA Akiko
Southeast Asian Politics, Area Studies

MURATA Koji
U.S. Foreign Policy, U.S. Politics and Film Culture

NISHIZAWA Yoshitaka
Public Opinion, Voting Behavior

OSAKI Yuma
International Political Economy: Asian Economic
Diplomacy

OYANE Satoshi
Theory of International Relations, International
Political Economy

RIKIHISA Masayuki
British Politics, Territorial Politics

TERADA Takashi
International Political Economy; Cooperation
and Competition over Global Hegemony

WASHIE Yoshikatsu
Politics of European Integration

Faculty of Economics

Department of Economics

ARAWATARI Ryo
Fiscal Policy and Social Security

AZUMA Yoshiaki
Studies of Production, Distribution, Savings and
Capital Accumulation

FUKUOKA Masaaki
Industrialization of East Asia

FUNAHASHI Tsunehiro
Economics of Social Welfare

HARADA Sadao
Citizen participation and local environmental
conservation.

HONRYO Takakazu
Theory of Communication, Game Theory

HOTTA Yuki
Analysis about Emergence of Business Cycle

IHARA Yuji
Macroeconomics and Financial Markets

ISHIDA Hazuki
Ecological Economics, Natural Resources and
Energy Economics

IWASAWA Masamune
Developing Methods for Data Analysis

KASAI Takato
History and Development of Economics

KAWASHIMA Nobuko
Cultural Economics, Creative Industries, Cultural
Policy

KISHI Motoshi
Ecological Economics, Environmental
Economics, Theoretical Economics

KITAGAWA Masaaki
Japanese Economy and Macroeconomics

KITASAKA Shinichi
Japanese Economy and Macroeconomics

KOBASHI Akira
Firm Objectives, Organization and Behavior

KOBAYASHI Chiharu
Industrial Organization

KOFUJI Hiroki
Regional Science and Urban Economics

KOGA Yasushi
Economic History of Japan: Monetary History,
Whaling Industry History

KOGURE Kengo
Political Economy, Labor and Technology/AI,
Gender

KUBO Tokujiro
International Finance

MITSUMATA Gaku
Study on the community-based natural resource
management

MIYAMOTO Dai
Labor Economics, Study of Human Resource
Development

MIYAZAKI Ko
Information Systems

Directory of Academic Staff

MIYAZAWA Kazutoshi
Population Economics, Public Economics

MOMI Takeshi
General Equilibrium Theory

NAGASAWA Serika
Early Modern and Modern British Trade History

NIIZEKI Mikiyo
Applied Finance

NISHIOKA Mikio
Comparative Economic Thought in Entrepreneurial Activities and Modern Cities

NORIKUMO Shunei
Research on information systems in the social sciences

OGAKI Masao
Behavioral Economics

OKUDA Iari
Urban History in Modern Kyoto : The Dynamics of Communities and Neighborhoods

ONO Takashi
Analytical Political Economy

ONOUZUKA Yoshimitsu
Political Debates on the International Capital and Labor Movements

OTA Naoki
Cultural Economics (Creative Economy, Traditional culture)

OTANI Minoru
Socio Economic History (Modern Germany)

OSHITA Yoshiyuki
Cultural Policy, Creative Economy

LI XIANGYU
Research on Regional Economic Industrial Structure and Environmental Issues

SAKODA Sayaka
Income Distribution and Social Inequality

SATO Atsuhiko
Applied Studies in Microeconomics and Game Theory

SHIKANO Yoshiaki
Money and Banking in Japan

SUGE Ikki
Economic and Social History and Urban History of Modern Britain

TAKAI Toshiaki
Information System

TAKEHIRO Ryoji
Organization and Behaviors of Japanese Firm

TANIMURA Tomoki
Study on Industrial Cycle and Economic Crisis in Modern Capitalism

TESHIMA Kensuke
Development economics, international economics and urban economics

TSUNOI Masayuki
Economic History of the United States

WADA Yoshihiko
Ecological Economics, Ecological Impacts of Mining and Nuclear Development

WADA Yoshinori
Theoretical and empirical analysis of Behavioral and Religious Economics

YAGI Tadashi
Public Economics (Creative Economy, Economics of Education)

YAMAMORI Toru
Solidarity economy, care economy, and social policy

YOKOI Kazuhiko
Economic Globalization and the Chinese Economy

YOTSUYA Koichi
Economic Growth, Economics of Education

Faculty of Commerce

Department of Commerce

AIKAWA Yuya
Development economics, Economic history

CHOI Yonghoon
Marketing

ENDO Toshiyuki
Globalization and Asian Economy

FUJIOKA Hirotaka
Regional Economics, Study on Shrinking Compact Cities

FUKUMOTO Toshiki
Organization Studies, Organizational Behavior

HATTORI Shigeyuki
Global Financial Crisis and Monetary Policy

HISAMATSU Taro
Classical Theories of International Trade

IMANISHI Koji
Corporate Governance, Business and Society

INAMI Toru
International Harmonisation of Accounting Standards

IOKIBE Shingo
International Finance

ISHIDA Daisuke
Marketing Management

KAWAI Takaharu
The Use of Accounting Information in Management Control

KAWAMITSU Naoki
Commodity History

KIMURA Takako
Economic history, Anthropometric history

KOJIMA Hidenobu
Socio-Economics, History of Social Thought

Evgeny KISELEV
Customs in International Commercial Transactions

KUNO Seiya
Algorithmic trading and market stability

MAKI Daiki
Econometrics, Time Series Analysis

MARUMO Toshihiko
Banking and Finance

MIZOBUCHI Hideyuki
Index number theory, productivity analysis, well-being

NAGANUMA Ken
The diffusion of e-Commerce

NAITO Toru
Studies on Urban Agglomeration with GIS

NAKAGAWA Masaru
Globalization in Management Accounting

NAKAMICHI Kazushi
Business System, Strategic Management

NAKAOKA Takayoshi
Business Economics, Data Analytics

NISHIKAWA Junpei
Economic Development in East Asia

NISHIMURA Sachiko
Tourism

OHARA Satomu
Product Innovation through Community

OTAHARA Jun
Management of Technology

SAKURAI Takanori
Valuation Using Financial Accounting Information

SASAKI Ichiro
Research on Individual Participation in Pension Insurance

SATO Ikuya
Sociological Analysis of Organizations, Research Methodology

SATO Kenichi
Global Business Communication

SAWADA Yusuke
Incentive design using accounting information

SEKI Tomohiro
SMEs (Small business) and Entrepreneurship

SHIBATA Yoshiharu
Study of Industry: Construction Equipment Manufacturers

SHIGA Osamu
Modern Accounting

TABUCHI Taichi
Trade, Money & Power in the World Economy

TAGUCHI Satoshi
Behavioral accounting, future design

TAKAHASHI Hiroyuki
Building Brand Marketing Strategy Based on Consumer Behavior

TANIMOTO Akira
Labor Management in Hospitality Industry

TOMITA Kenji
Strategic Management

TSUJIMURA Motoo
Decision Making under Uncertainty in Business

UEDA Hirofumi
Financial Factors and Economic Activity

UEDA Masahiro
Empirical Analysis of Industrial Organizations

URYUHARA Yoko
Behavior Change Management, Social Marketing

XIAO Miao
The Accounting System in China

YAMAMOTO Tatsushi
Accounting Regulations and Social Welfare

YAMASHITA Mai
Nursing and Women's Labour in Modern Japan

YAMAUCHI Yuki
Business History

YIN Di
Regional Economics

YOSHIKAWA Eiichiro
Laws and Rules of International Business
Transactions; Resolution of International
Business Disputes

ZHU Haoliang
International Economics

Faculty of Policy Studies

Department of Policy Studies

ADACHI Koji
Transport Policy · Efficiency of
Organizations · Regional Policy

ADACHI Mitsuo
Investment, Market, and Business for Sustainable
Society

FUJIMOTO Tetsushi
Work-Family Balance

HATAMOTO Yusuke
Social Welfare Administration · Life Structures

IGAWA Moegi
Empirical analyses on environment/energy/
poverty issues

IGUCHI Mitsugu
The important point in Cultural and Tourism
studies is Humanities

IRIE Yoko
Organizational Issues in Local Governments

KAKIMOTO Akihito
Explore historically the thought systems of
modern society

KAWAGUCHI Akira
Work-Life Balance and Gender Equality

KAWAI Keiji
Sports Law and Policy

KAWAKAMI Toshikazu
Applied Game Theory

KAWAURA Akihiko
Public Choice

KAZAMA Norio
Analysis on the Structures and Functions of
Governance Network

KOTANI Mari
legitimacy of Environmental rulemaking, control
of administrative discretion

KUBO Makoto
Well-being in the Work Organizations

MASUBUCHI Asako
Cold War Okinawa History, Medical History

MAYAMA Tatsushi
Public Administration

MIYOSHI Hiroaki
Technology, Social Welfare, and Public Policy

MUSASHI Katsuhiro
Legislative Process and Institutions in
Parliament, Direct Democracy

NAKAHARA Akira
Educational Sociology, Migration Studies,
Disparity

NAKAJIMA Eri
How to realize SDGs in local area through social
innovation

NAKAO Yuto
Administrative Law

NAKATA Yoshifumi
How Engineers Work Creatively

NEGISHI Shoko
International Finance and Development

NIIMI Yoko
International development, international
cooperation, and gender

NODA Yu
Local Government Studies

NOMA Toshikatsu
Regional Finance

OKAMOTO Yumiko
SDGs, Climate Change and Gender

OSHIMA Kayoko
Right to education, Students' human rights

OTA Hajime
Organization and Individuals

TADA Minoru
Marketing research based on affective science

TANAKA Hideki
Organizations and Human Resource
Management in Contemporary Society

TANAKA Hiroki
Regional Regeneration in the Aging society

TOGASHI Kosuke
International Politics, Eurasian Studies

TSUKIMURA Taro
Area Studies on the Balkans, Comparative
Studies among Regional Conflicts

YAMAYA Kiyoshi
Policy Evaluation and Governmental
Accountability

YOSHIDA Toru
Political Science (Comparative Politics; European
Politics)

Faculty of Culture and Information Science

Department of Culture and Information Science

ABE Masato
Complex systems including brain, behavior,
society, and ecosystems

FUKAGAWA Daiji
Algorithms for Discrete Optimization

FUKUDA Tomoko
The Heian Era Literature, Waka Literature

Gaetan RAPPO
Digital History, History of Medieval Japan,
History of Religion

HATANNO Kenji
Media Informatics, Service Informatics, Data
Engineering

HOSHI Hidehito
Linguistic Theory (Syntax)

IIO Takamasa
Social robotics

IMOTO Keisuke
Multimedia analysis and synthesis

ITO Noriko
Functional Linguistics and Natural Language
Processing

KANBARA Tomoya
Research on hashtag recommendation methods
for images

KAWASE Akihiro
Quantitative Analysis of Cultural Phenomena,
Digital Humanities

NAKANISHI Yoshinori
Statistical Science and Statistical Physics

NAKAYASU Mari
Arts and Cultures of East Asia

SAKATA Mamiko
Body Mediated Information

SANADA Teruki
Shadow education, Bullying at school

SANO Akiko
Film and Media Studies

SHEN Li (SHIN Riki)
Study of Linguistic Typology

SHIMOJIMA Atsushi
Effects of Explanation and Persuasion based on
Graphical Representations

SUGIO Takeshi
Visual Cognition

TAGUCHI Tetsuya
Comparative Cultural Studies

TSUMURA Hiroomi
Sustainability on Resource Sharing of Local
Societies and Ethnic Groups

YADOHISA Hiroshi
Multivariate Data Analysis, Computational
Statistics

YAMAGATA Mei
Social psychology of exclusion and reconciliation

YAMAUCHI Nobuyuki
English Linguistics, Corpus Linguistics

ZHENG Yuejun (TEI Yakugun)
Quantitative Research of Social Phenomena

Directory of Academic Staff

Faculty of Science and Engineering

Department of Intelligent Information Engineering and Sciences

CHENG Jun
Communications Theory and Signal Processing

FUJITA Tomohiro
Estimation of human concentration based on
deep learning

HAGA Hirohide
Painting Analysis with Computer

HASHIMOTO Masafumi
Autonomous/cooperative sensing of mobility
robot

KATO Tsuneo
Information Processing of Second Language
Speech and Interface

KATSURAI Marie
Multimedia Retrieval and Data Mining

KIMURA Tomotaka
Communication Network Design and Analysis

OKUDA Masahiro
Intelligent information processing, machine
learning

ONO Keiko
Intelligent Informatics, Kansei Informatics

TSUCHIYA Seiji
Research of Computer and Robot with Common
Sense

WATABE Hirokazu
Natural Language Understanding and Intelligent
Robot

Department of Information Systems Design

KIMURA Tatsuaki
Information and communication systems,
probabilistic modeling and analysis

KOITA Takahiro
Harmonized Cloud Computing and Human
Computation on Distributed Systems

OHSAKI Miho
Machine Learning and Knowledge Discovery

OKUBO Masashi
Human Interface

SATO Kenya
Distributed Systems with Internet of Things

SHIRAHAMA Kimiaki
Application of Artificial Intelligence to
Multimedia Analysis

TAKAHASHI Kazuhiko
Intelligent Control Systems

TAMURA Akihiro
Natural Language Processing

Ivan TANEV
Evolutionary computing: implementation and
application for design, optimization and control

TSUCHIYA Takao
Advanced Acoustic System

Department of Electrical Engineering

BABA Yoshihiro
Electromagnetic Compatibility

HIRATA Kentaro
Systems Control Theory and its Applications

FUJIWARA Koji
Evaluation of Functionality of Magnetic
Materials

INOUE Kaoru
Analysis and Control of Electro-Mechanical
Systems

KATO Toshiiji
Operation Analysis and Control of Electric and
Electronic Circuit Systems

KONDO Koichi
Applied Mathematics

KOYAMA Daisuke
Applied Acoustic Devices and Measuring
Techniques

MATSUKAWA Mami
Ultrasonic electronics and medical applications

TAKAHASHI Yasuhito
Power Magnetics and Electromechanical Energy
Conversion

YOSHIKAWA Harunori
Instabilities and transitions in the dynamics of
fluids

Department of Electronics

DEGUCHI Hiroyuki
Antenna Engineering and Electromagnetic Field
Analysis

IBI Shinsuke
Stochastic Signal Processing for Communication
Systems

IWAI Hisato
Radio Propagation in Wireless Communications

KASUYA Toshiro
Plasma Physics

OHTANI Naoki
Semiconductor Optical Devices, Optical Physics
of Condensed Matters, Synthesis of Novel
Fluorescent Materials

OHIRA Masataka
Development of microwave and millimeter-wave
passive circuits

SAKAI Kenji
Development of advanced measurement system
and material characterization using magnetism

SATO Yuuki
Functional Electronic Materials and their
Applications

SUZUKI Masayuki
Photonics

TANAKA Tomoyuki
Partial differential equations

TODA Hiroyuki
Microwave Photonics and Nonlinear Fiber Optics

Department of Mechanical and Systems Engineering

HIROGAKI Toshiki
Control Systems and Autonomous Automation
for Manufacturing

INAGAKI Kazuhiro
Physics of fluid mechanics, turbulence modeling

INAOKA Kyoji
Dynamic Control of Heat and Fluid Flow,
Development of High Performance Heat
Exchangers

MATSUMURA Eriko
Spray Combustion Control for Maximizing
Energy Efficiency and Reducing Emission

MATSUOKA Takashi
Mechanical Design, Composite Materials

MIYAMOTO Hiroyuki
Fabrication and Evaluation of Nanostructured
Materials

NOGUCHI Takashi
Fluid Mechanics of Mixing and Transport
Processes of Heat and Matter

OBUNAI Kiyotaka
Research on Reliability of Advanced Composite

SASADA Masahiro
Research on Material Deformation for Advanced
Metal Forming

TAKUWA Hideki
Theory of Partial Differential Equations and
Inverse Problems

TSUJIUCHI Nobutaka
Motion and Vibration Control as well as Human
Dynamics

Department of Mechanical Engineering and Science

HARA Shumpei
Modification of Flow and Heat Transfer by Small
Disturbances or Additives

HIRATA Katsuya
Hydraulics, Aerodynamics and Fluid Mechanics
in Mechanical Engineering

ITO Akihito
Motion Control of Robots

NAKAGAWA Masao
Advanced manufacturing using automation

NAKAMURA Morimasa
Surface Generations for High Functionalities of
Machine Elements

OKUBO Kazuya
Development of Eco-friendly Natural Fiber
Composite Materials

SENDA Jiro
Analysis of High Efficiency and Low Emission
Spray Combustion

TAKAOKA Masanori
Self-organized Structures and Statistics in
Globally Disordered System

TANAKA Tatsuya
Research on Forming Processing of Metal, a
Polymer Material, and Its Composite Material

YUASA Motohiro
Development of high-performance metals and
alloys via microstructure control

INUI Kanji
Ergodic theory and Fractal geometry

Department of Molecular Chemistry and Biochemistry

DOI Takayuki
Development of Battery Reactions

ENDO Takatsugu
Structure, Dynamics and Physical Properties of Ionic Liquids

HITOMI Yutaka
Chemistry of Reactive Oxygen Species and Oxidation Reaction

INABA Minoru
Materials for Rechargeable Batteries and Fuel Cells

KATO Masaki
Solid State Physics and Chemistry of Transition Metal Compounds

KIMURA Yoshifumi
Photo-chemistry and Invention of New Materials Using Designer Fluids

KITAGISHI Hiroaki
Development of Synthetic Hemoglobin, Artificial Blood, and Drug Delivery Systems using Cyclodextrins

KODERA Masahito
Development of Highly Efficient Functional Molecules for Understanding of Biological Systems

KOGA Tomoyuki
Polymer Chemistry, Advanced Biomaterials

MIZUTANI Tadashi
Mechanical and Electronic Organic Materials

NISHIMURA Shinnosuke
Polymer Chemistry, Polymer Biomaterials

OTA Hiroto
Synthesis, functionalization, and design of magnetic materials

Department of Chemical Engineering and Materials Science

HASHIMOTO Masahiko
Biosensing Technology

ISHIDA Naoyuki
Colloid and Interface Chemistry

MATSUMOTO Michiaki
Development of Environmental-friendly Bioseparation Process

SHIOI Akihisa
Design of Chemical System with Semblance of Life

SHIRAKAWA Yoshiyuki
Design Engineering of Functional Particles

TAHARA Yoshiro
Drug Delivery System

TAKENAKA Sakae
Catalysis and Catalysts

TSUCHIYA Katsumi
Transport Phenomena of Multiphase Dispersion in Environmental Issues

TSUKAGOSHI Kazuhiko
Specific microfluidic flow observed in a micro-space

YAMAMOTO Daigo
Colloid and Interface Science

YOSHIDA Mikio
Controls of Particle Flowability and Adhesiveness

Department of Environmental Systems Science

AKAO Satoshi
Environmental and Sanitary Engineering

FUKUMA Koji
Environmental Magnetism

GOTO Takuya
New Energy Systems

HASEGAWA Motohiro
Soil Biology

ITO Koichi
Mathematical analysis of the behavior, ecology, and evolution of organisms

KOBATAKE Hidekazu
Earth material science

MORIMITSU Masatsugu
Development of next-generation secondary battery and water electrolysis

OSONO Takashi
Ecology, Biodiversity Science, and Fungi

TSUTSUMI Hiroyuki
Earthquake Geology, Tectonic Geomorphology

YAMANE Shozo
Atmosphere and Climate Dynamics

YOKOO Yoriko
Environmental Geochemistry

Department of Mathematical Sciences

ASAOKA Masayuki
Topological and geometrical aspects of dynamical systems

IMAI Hitoshi
Numerical Analysis

MIKI Hiroshi
Applied Mathematics, Mathematical Physics

SAITO Seiji
Qualitative Theories of Ordinary Differential / Difference Equation

SHIOZAWA Yuichi
Probability Theory

TAKEI Yoshitsugu
Analysis, Differential Equations

TSUDA Hiroshi
Financial Technology, Data Science, Machine Learning

Faculty of Life and Medical Sciences

Department of Biomedical Engineering

ITO Toshiaki
Nonlinear Continuous and Discrete Mathematical Models and its Application

KAWAGUCHI Masataka
Vibration analysis to reduce vibration for machineries and structure

KENMOTSU Takahiro
Biological Physics

KOIZUMI Noriko
Tissue Engineering and Drug Development for Eye Diseases

MORITA Yusuke
Development of Biomaterial and Evaluation Method for Tissue Engineering

OKUMURA Naoki
Development of New Therapeutic Modality for Treating Eye Diseases

TANAKA Kazuto
Process Design and Evaluation of Mechanical Properties of Engineering Materials, Composite Materials, Micromaterials and Biomaterials

TSUMUGIWA Toru
Robotics, Control Engineering

WATANABE Kimitaka
Luna probe, Bio-mimicry, Management of Technology

YAMAMOTO Koji
Analysis of Mechanical Function and Molecular Expression on Living Tissue

YOKOGAWA Ryuichi
Biomechanics, Bio-robotics

Department of Biomedical Sciences and Informatics

AKIYAMA Iwaki
Ultrasonic Imaging and Bio-effects by Exposure to Ultrasound

HIROYASU Tomoyuki
Intelligent processing of human informatics using AI and ICT

HIRYU Shizuko
Behavioral and Engineering Study for Bat's Biosonar

HIWA Satoru
Brain Informatics: Analyzing Brain Function with Machine Learning

KOBAYASI Kota
Neuroethology: Hearing and Vocal Communications

NAKAMURA Akira
Artful synthesis of functional molecules

OE Yohei
Organic chemistry: organic synthesis, transition metal complexes, catalytic reactions and analytical chemistry

OHTA Tetsuo
Effective Synthesis of Biologically Active Compounds and their Functions

Directory of Academic Staff

SADAKANE Koichiro
Biological Physics, Soft Matter Physics

TAKAYANAGI Shinji
Fabrication and Evaluation of Piezoelectric
Materials, Ultrasonic Measurements

TANIOKA Kensuke
Methodology of multivariate data analysis

Department of Medical Life Systems

FUNAMOTO Satoru
Inhibition of $\alpha\beta$ Production

ICHIKAWA Hiroshi
Oxidative Stress, Functional Food Medicine

IKEGAWA Masaya
Genomics and Proteomics for Human and Model
Organisms

IWASAKO Keiko
Basic and Clinical Research in the Field of
Gastroenterology and Hepatology

KAKUDA Nobuto
The brain alteration due to Alzheimer's Disease

KOBAYASHI Akira
Basic Research on Cancer Biology and
Therapeutics

MITA Yuichiro
Analysis of the Pathogenesis of Diabetes.

MOTOMURA Yukiko
Science communication

NISHIKAWA Keizo
Basic Bone Biology and Immunology

NISHIKAWA Kiyotaka
Drug Discovery based on Cell Biology

NOGUCHI Noriko
Mechanisms Underlying Oxidative Stress
Inducing Diseases and Defense Systems

SAITO Naoto
Functional Biology of Neuroscience

TAKAHASHI Miho
Intracellular Vesicular Transport

URANO Yasuomi
Research on diseases caused by abnormal lipid
metabolism

WAKU Tsuyoshi
Molecular biology of cancer immunology

YAMASHITA Shuji
Dynamics of metals in organisms

YONEI Yoshikazu
Evaluation of Aging, Risk Factors and Glycation
Stress

Faculty of Health and Sports Science

Department of Health and Sports Science

ARAI Aya
Training Science for Athletes, Biomechanics

EBINE Naoyuki
Human Nutrition, Energy Metabolism, Physical
Activity

ENDO Hanae
International Development through Sport, Sport
for Development and Peace

FUJISAWA Yoshihiko
A Study on the Ability and Quality of a Good
Athlete

FUKUOKA Yoshiyuki
Environmental Physiology / Anthropology /
Ergonomics

HIROMITSU Yuya
Motor control and learning, Sports Psychology

HOJO Tatsuya
Research for Sports Injury, Conservative Therapy
of Musculoskeletal Disorder

ISHII Kojiro
Development of Exercise Prescription

ISHIKURA Tadao
Motor Control and Learning, Sports Psychology

IWATA Shotaro
Creation of good health and physical education
lesson and teacher professional development

IZAWA Tetsuya
Sports Biochemistry

KAMIBAYASHI Kiyotaka
Neurophysiology of Human Movement, Motor
Control and Learning

KAWANISHI Masahiro
Sports for People with Disabilities

MATSUKURA Keita
Sports Coaching

NAKAMURA Yasuo
Sports Biomechanics

NINOMIYA Hiroaki
Sport Marketing

SHOJI Hiroto
Sport Business

TAKAHASHI Katsuki
Skeletal muscle design

TAKAKURA Hisashi
Oxidative Metabolism in Skeletal Muscle

TAKEDA Masaki
Physiological Base in Sports Performance and
Training

TAZUKE Shunichi
Theory and Practice for acquisition of "Knack"
and "Intuition"

TSUCHIYA Yoshifumi
A regulation of the satellite cells

WAKAHARA Taku
Skeletal Muscle Mechanics

YANAGITA Masahiko
Exercise Epidemiology

YANASE Ko
Rehabilitation

YOKOYAMA Katsuhiko
Cultural Study of Sports/ Sports Policy and
Management

Faculty of Psychology

Department of Psychology

AOYAMA Kenjiro
Psychology of Learning, Behavior Analysis,
Psychology of Eating Behavior

FUJIMURA Tomomi
Psychology of Emotion, Psychophysiology

HATA Toshimichi
Physiological Psychology, Behavioral
Neuroscience

ISHIKAWA Shinichi
Clinical Child and Adolescent Psychology

KAMBARA Kohei
Clinical Psychology, Cognitive Behavioral
Therapy

KOHYAMA Takaya
Student Guidance for Social and Emotional
Development

MORI Mayumi
Criminal Psychology

MUTO Takashi
Clinical Behavior Analysis

NAKAYACHI Kazuya
Risk Perception and Disaster Preparedness

OIKAWA Masanori
Social Psychology

OKITSU Mariko
Clinical Psychology, Family Psychology

OYA Aiko
Clinical Psychology, Behavior Analysis

SUZUKIDA Eri
Developmental Clinical Psychology,
Psychological Family Support

SUGIYAMA Hiroko
Clinical Psychology, Personality Psychology

TAKEHARA Takuma
Cognitive Psychology, Facial Attractiveness

TANAKA Ayumi
Human Motivation

TSUDA Hiroyuki
Cognitive Psychology

UCHIYAMA Ichiro
Development of Cognition and Emotional in
Infancy

YOGO Masao
Health Psychology, Clinical and Social
Psychology, Military Psychology

Faculty of Global Communications

Department of Global Communications

Regine DIETH
Japanese Society and Gender

FUKUSHIMA Marcelo
International Economics, International Business

Bettina GILDENHARD
Migration Studies, Multicultural Coexistence

HASEBE Yoichiro
Cognitive Linguistics and Corpus Linguistics

ISE Akira
French Literature of the 20th Century

GUO Yunhui (KAKU Unki)
Chinese linguistics

KAWAHARA Daisuke
American Culture, Film Studies

KUBOTA Mitsuo
Sociolinguistics

Dana John LINGLEY
Applied Linguistics, Second language motivation

MINAI Masahiro
Eighteenth Century English Literature

Ghislain MOUTON
Applied linguistics, Acquisition of French as a second language, Intercultural Communication

NAKAMURA Tsuyako
American Studies (Comparative Study of Women's Labor Issues between Japan and the U.S.)

NAKANISHI Hiroki
A Historical Study of the Languages and Dialects Distributed in Southeast China

NAKATA Yoshiyuki
English Language Education, Applied Linguistics

OKAZAKI Takayuki
Intercultural Communication, Sociolinguistics, Pedagogy

Peter NEFF
Applied Linguistics, Teaching English as a Foreign Language

Sun SHUQIAO (SON Jyukyoo)
Chinese linguistics, Chinese-Japanese Contrastive Studies

SUDO Jun
Phonetics, Japanese as a Second Language

SUZUKI Mikiko
Second Language Acquisition, TESOL

SUZUKI Nobuko
Japanese Language Education, Career education for international students

SUWA Akira
Nineteenth-century and Contemporary British literature

Roehl SYBING
Intercultural understanding, multilingual dialogue, qualitative research methodology

TAMAI Fumie
Nineteenth-century British Culture and Literature

TERANISHI Takahiro
Concept Formation by Metaphorical Extensions

TANG Hau-Yun (TOU Kouun)
Taiwanese and Chinese Modern Literature

UCHIDA Naotaka
Chinese Modern History

UCHINO Crystal Kimi
Cultural Studies, Social History, Ethnic Studies

WAKITA Riko
Japanese Education, Writing Educational

YOSHIDA Yuko
Phonology of Linguistic Variations: the Kyoto Dialect, Englishes and Italian Dialects

Faculty of Global and Regional Studies

Department of Global and Regional Studies

ABE Noriyuki
Chinese Film

AKIYAMA Yoko
Modern and Contemporary History of Switzerland

ASABA Yuki
Korean Politics and Diplomacy, Comparative Politics, Japan-Korea Relations

ENDO Toru
A Study of American and English Popular Culture

FUTAMURA Taro
Geographies of Agriculture and Food, Regional Studies of North America

James HEATHER
Second Language Acquisition, Applied Linguistics, Cultural Anthropology

HIGOMOTO Yoshio
American History, American Studies

INAGAKI Shunji
Second Language Acquisition, English Language Education, Linguistics

ISHII Kae
Social History (Modern and Contemporary German Society); Gender and "Civil Society"

ISHINO Mika
English Language Education, Classroom Interaction Research, Conversation Analysis

ITO Gengo
French Renaissance Literature and Thought

IZUMI Masumi
Asian Americans and Cultural Diversity in North America

KAMEYA Yurika
Contemporary French Society and Culture

KANZAKI Mai
Canadian Theatre and Performance

KO Young Jin
Korean Linguistics, Sociolinguistics

KUNO Kiyoko
Minority Studies, Spanish Area Studies

KURASHINA Itsuki
History of U.S. Foreign Relations, International Politics

Matthew LARKING
Japanese Art History, Modern Art History and Theory

David MCCURRACH
Computer-Aided Language Learning, English Language Education

MIHARA Reiko
Comparative Education, Sociology of Education, Minority Studies

MIYAZAKI Katsuhiko
French Studies, Cultural Representation Studies, Visual Studies

MIZUTANI Satoshi
British Imperial History / Colonial Studies

MONOBE Hiromi
History and Culture of Hawaii, History of Japanese Americans

MUKAI Masaki
Global History, Islam in Maritime Region

NAKANO Yukio
Russian Emigre Literature, Translingual Literature

NAKASHIMA Yohei
European Integration, Western Political Thought

Zachary NANBU
Conversation Analysis, Applied Linguistics, English Education

NECHAEVA Angelina
Russian Culture Abroad, Russian Emigration

OCHIAI Akiko
African American History and Culture

OGAWARA Hiroyuki
History of Japan-Korea Relations in Modern Age

OKI Sayaka
Literary Criticism, Literary Theory, Comparative Cultural Studies

ONO Fumio
German Philosophy, Jewish Studies, History of Educational Thoughts

OZAKI Shigeru
Language Testing, Education for International Understanding, Language Education Policy

PARK Jonghoo
Modern Korean Grammar, Korean Language Education

Susanna PAVLOSKA
English Language and Literature, Gender Studies

Andres PEREZ RIOBO
Global History, Spanish Education

QIAN Ou
Chinese History of Ideas, Outline of the Modern Thought between Japan and China

SAKAMOTO Nami
Foreign Language Education, Narrative Inquiry, Teacher Professional Development

SAKITA Tomoko
Cognitive Pragmatics, Reporting Discourse, Gender Studies

Marco SCHULZE
Games for Language Learning

Directory of Academic Staff

SHIBATA Nobuko
Latin American Studies, Social Movements

SHIMIZU Minoru
History of Contemporary Art and Art Criticism

SHIMIZU Tatsuya
Latin American Studies, Agricultural Development

SOEJIMA Ichiro
Chinese Classical Philology, Sinology in Japan Edo Period

TAKAGI Shigemitsu
History of Audio-visual Culture

David TARANCO
Translation, Travel Writing, Spain-Japan Relations

TATEISHI Yoko
History and Politics of Russia and the Former Soviet Union

USAMI Koichi
Social Policies in Latin America · Latin American Studies

Aysun UYAR
International Relations, Regionalism, Regional Environmental Governance

WAKO Masakazu
Comparative Study of Korean and Japanese, Second Language Acquisition

WANG-KANDA, Liulan
Dynamics, Transformations and Religious Co-existence of Chinese Diaspora in Asia and Beyond

WATANABE Fumi
Art/s and Cultures of Oceania, Anthropology

YIN Qing
Early Modern and Modern History of China, Media History

YOON Haeyoung
British and Irish Studies, Ethnic Studies

ZHANG Sujuan
Modern Chinese Linguistics, Chinese Language Education

Graduate School of Policy and Management

ADACHI Mitsuo
Investment, Market, and Business for Sustainable Society

FUJIMOTO Tetsushi
Work-Family Balance

HATAMOTO Yusuke
Social Welfare Administration · Life Structure

IGUCHI Mitsugu
The important point in Cultural and Tourism studies is Humanities.

IRIE Yoko
Organizational Issues in Local Governments

KAKIMOTO Akihito
Explore historically the thought systems of modern society

KAWAGUCHI Akira
Work-Life Balance and Gender Equality

KAWAI Keiji
Sports Law and Policy

KAWAKAMI Toshikazu
Game Theoretical Analysis of Institutions and Conventions

KAWAURA Akihiko
Public Choice

KAZAMA Norio
Analysis on the Structures and Functions of Governance Network

KOTANI Mari
legitimacy of Environmental rulemaking, control of administrative discretion

KUBO Makoto
Well-being in the Work Organizations

MAYAMA Tatsushi
Public Administration

MIYOSHI Hiroaki
Technology, Social Welfare, and Public Policy

MUSASHI Katsuhiko
Legislative Process and Institutions in Parliament, Direct Democracy

NAKAJIMA Eri
How to realize SDGs in local area through social innovation

NAKATA Yoshifumi
How Engineers Work Creatively

NEGISHI Shoko
International Finance and Development

NIIMI Yoko
International development, international cooperation, and gender

NODA Yu
Local Government Studies

NOMA Toshikatsu
Regional Finance

OKAMOTO Yumiko
SDGs, Climate Change and Gender

OSHIMA Kayoko
Right to education, Students' human rights

OTA Hajime
Organization and Individuals

TADA Minoru
Marketing research based on affective science

TANAKA Hideki
Organizations and Human Resource Management in Contemporary Society

TANAKA Hiroki
Regional Regeneration in the Aging society

TOGASHI Kosuke
International Politics, Eurasian Studies

TSUKIMURA Taro
Area Studies on the Balkans, Comparative Studies among Regional Conflicts

YAMAYA Kiyoshi
Policy Evaluation and Governmental Accountability

YOSHIDA Toru
Political Science (Comparative Politics ; European Politics)

Graduate School of Global Studies

AKIBAYASHI Kozue
Gender and Peace

Gavin J. CAMPBELL
American History, American Religion

Anne GONON
Social Violence and Care Studies

KANNO Yuka
Queer Studies, Film and Visual Culture Studies

KIKUCHI Keisuke
Globalization Theory, Racism Studies, French Studies

MIMAKI Seiko
American Politics and Diplomacy, International Relations (IR)

MINAMIKAWA Fuminori
Sociology, Race and Ethnicity, Migration Studies

MINE Yoichi
Development Studies, Human Security Studies

MURATA Yujiro
Intellectual History of China, Modern Chinese History, Sino-Japan Relations in the Modern Era

NAITO Masanori
Middle Eastern Studies, International Migration Studies

NAKANISHI Hisae
Conflict Prevention in the Middle East and Eurasia, International Cooperation

NISHIKAWA Yukiko
International relations and security in East and Southeast Asia

OKANO Yayo
Western Political Philosophy, Feminist Political Theory

OTA Osamu
Korean Studies, Contemporary Korean History, History of Japanese-Korean Relations

OYAMADA Eiji
Governance and development studies in developing/emerging countries

QIAN Ou
Outline of the Modern Thought between Japan and China

TOMIYAMA Ichiro
Japanese History, Okinawan Studies Cultural Studies

YAN Shanping
Chinese Economy and Society, Development Economics

ZHOU Jun
Political History of China, History of the Chinese Communist Party

PAREPA Laura-Anca
International Security, Conflict Studies, International Public Policy

Graduate School of Brain Science

KANEKO Naoko
Neuronal production and regeneration in the adult brain

MASAMIZU Yoshito
Development and Application of Techniques to Construct Novel Neural Circuits

MATSUI Teppei
Neurocomputation

MISONO Hiroaki
Molecular Mechanisms of Alzheimer's Disease

MOTOYAMA Jun
Molecular Mechanisms Regulating Brain Development and Maturation

SAKABA Takeshi
Mechanisms of synaptic Transmission and plasticity

TAKAHASHI Susumu
Understanding Cognitive and Behavioral Functions of the Brain

TAKAMORI Shigeo
Molecular Mechanisms of Neurotransmitter Release

Law School

ASANO Yuki
Philosophy of Law, Basic Theory of Private Law, Legal Pluralism

FUKAYA Itaru
Civil Law

HAMADA Tsuyoshi
Code of Criminal Procedure

HAYASHI Shoichi
Rule of Evidence in Civil Procedure

Colin P.A. JONES
Anglo-American Law and Comparative Law Focused on Japan, The Law of Identity

KINOSHITA Koji
Laws on Insurance Contracts and Regulation on Insurance Business

KOBAYASHI Wataru
Anti Monopoly Act

MATSUBARA Hisatoshi
Knowledge of Illegality and Criminal responsibility

MATSUMOTO Tetsuji
Constitutional Law, US Constitutional Law

MIYUKI Masaki
Constitutional Law, Separation of Powers

MURANAKA Takashi
Labor Law

NAKANISHI Masashi
Bankruptcy Law

ONAKA Arinobu
Law of Contract and Comparative Law

SAKAMAKI Ayami
Tax Law

SAKUMA Takeshi
Civil Law, Trusts Law

SHUMI Mitsuo
A Comparative Study of Japanese, American and German Criminal Justice

SOGO Taro
Criminal Law, Complicity

SONODA Kenji
Civil Procedure

SUZAKI Hiroshi
Corporation Law, Insurance Law

TAKAHASHI Koji
International Trade Law, Private International Law, International Civil Procedure

YOKOTA Kohei
Child Law

Graduate School of Business

Business Studies

ARII Ken
Environmental conservation and preservation

Eugene CHOI
Strategic Management of Digitalization of Kyoto and Kyoto-Based Enterprises

FUJIWARA Koichi
Financial Engineering, Statistics, Economics

INOUE Fukuko
Organizational Behavior, Human Resource Management, Organization Change

KODAMA Toshihiro
Small and Medium-sized Enterprises, Industrial Clusters

MORI Yoshihiro
Innovation Management

Se-il MOON
Urban Economics, Transport Economics

NOBEOKA Kentaro
Management for Value Creation and Innovation

NOSE Yoshiaki
Corporate Finance

YAMASHITA Takako
Marketing, Consumer Behavior

Global Business and Management Studies

Robert W. ASPINALL
The political and educational systems of Japan and the UK

Anyu DOI-BENSON
Contemporary Japanese media, Children's and youth media cultures

IIZUKA Mari
Sustainability and Business Ethics, Well-being, Japanese and Asian Business Management

IZUMI Masumi
International Migration, North American Race Relations, Law and Civil Liberties

OKUDAIRA Hiroko
Labor Economics, Economics of Organization and Human Resource Management, Data Analysis on Economics Issues

Philip SUGAI
Marketing, Innovation, Responsible Marketing

OGUSHI Yoko
Investment Appraisal

Arif IQBALL
Corporate Leadership and Strategic Management

SHODA Vera Paola
Data Science and Artificial Intelligence (AI)

Yong YIN
Operations Management, Sustainable Operations, Flexible and Agile Organization, Manufacturing Strategy

YOSHIDA Etsuaki
International Finance, Business in Emerging Economies, Islamic Finance, Fintech

The Endowed Education and Research Project

UMEDA Akio
Corporate Governance

Center for Christian Culture

LEE Wonjung
History of Protestant in Modern and Contemporary Japan

MORITA Yoshiki
The History and Practice of Christian Education

Institute for Study of Humanities and Social Sciences

HAYASHIDA Hideki
Development Economics, Study of Indonesian Economy

MOTOOKA Takuya
Regional Studies of Modern Japan, Urban Social Problems

SEKIGUCHI Hiroshi
Modern Japanese History of Thought, Culture and Society

Directory of Academic Staff

Harris Science Research Institute

MASU Taichi
Science Communication in Mass Media

Philip TROMOVITCH
Research on Human Sexuality and Personality

SUZUKI Yuta
Physical Chemistry Focused on the Utilization of Local Resources

International Institute of American Studies

ISHIGURO Anri
Jewish Studies, American Jewish Women's History, Zionist Thought

KAWANABE Takeshi
The U. S. Constitution, Constitutional Law, Comparative Studies between the U. S. and Japan of Judicial Selections and Dismissals

Doshisha University Historical Museum

HAMANAKA Kunihiro
Japanese Archaeology – Roof Tile, Temple, City –

WAKABAYASHI Kunihiro
Japanese Archaeology, Prehistory, Museology

Center for Learning Support and Faculty Development

CHO Jiyoungh
Medieval Japanese Literature, Japanese-Korean Narrative Literature

NISHI Chihiro
Education Relating to Responsible Research and Innovation

SHINODA Masato
Research for Higher Education, Educational Development in Higher Education

Center for License and Qualification

HARADA Takashi
Library and Information Science

HONDA Chiaki
Citizenship Education, Education Policy, Teaching Materials Development

INOUE Hiroshi
Guidance and Counselling to Respect Each Individual

MORIGUCHI Hirokazu
Social Studies

NAKASE Koichi
Special Needs Education, Education for Deaf and Hard of Hearing Children

OKUNO Hiroyuki
Curriculum Development of Social Studies

SATO Sho
Usage Analysis of Libraries and Information Services

TANAKA Kiho
Human Motivation, Teacher Education, Intercultural Education

YAMAGUCHI Yosuke
Cognitive Psychology, Education on Creative Thinking

YANAGISAWA Akinori
Studies on School Educational Practices

Center for Global Education and Japanese Studies

DOI-BENSON Anya
Contemporary Japanese media and children's media cultures

ARII Ken
Nature Preservation and Environmental Conservation

DAIKUHARA Hayato
Japanese Discourse Analysis

LI Changbo
Linguistics, History of Japanese Language, Historical Comparative Stylistics

MATSUMOTO Shusuke
Japanese Linguistics, Japanese Language Education

MIKAMI Sota
The "Outer Lands" Japanese Literature

Robert William ASPINALL
The Political and Educational Systems of Japan and the UK

SUH Yoon Soon
Japanese Linguistics, Sociolinguistics, Comparative Study of Japanese and Korean Languages

YOSHIKAWA Kanako
Business Japanese, Career Support

The Institute for the Liberal Arts

Colin DAVIS
International Economics and Economic Growth

Gregory POOLE
Anthropology of Education and Language

Gill STEEL
Comparative Politics, Public Opinion, Gender

Jennifer MCGUIRE
Educational Anthropology, Deaf Studies, Disability Studies

David UVA
History Education, Japanese History, and Colonial History

Organization for Research Initiatives and Development

Onur ALPARSLAN
Information Networks for Cooperative Autonomous Driving

FUJINAGA Ayano
Schopenhauer Studies as Transcendental Philosophy

FUJIOKA Emyo
Understanding of behavioral ecology of echolocating bats in the wild

KAGIYA Hideyuki
Biblical Hermeneutics

KARASUGI Keiichi
Drug development using artificial hemoglobin

KATO Masaharu
Development of human communication

KAWAMA Raki
Effects of resistance training on muscle stiffness

KAWAMI Fuminori
Inequality in Housing Recovery After Disasters

KITANI Akihiro
History (Especially Focused on the Modern and Contemporary History of Okinawa)

OISHI Kan
Physical growth and development, health geography

OMICHI Chie
Sleep epidemiology

SHIROTA Ai
Scientific research on human sleep

TANAKA Seiya
High temperature materials chemistry

TOGASHI Mahabat
International Development Cooperation · Development Aid and its evaluation

TSUJISAKA Shinya
History (Ancient Mesopotamian History)

TSUSHIMA Kari
Arendt Studies/ Ethics of Care

YAGI Tomoki
Performing Arts and Stories at Temples in the
Edo period

YASUI Hiroshi
Rights Movement and Politics in Israel

Center for Advanced Promotion Support for Graduate Schools

AZECHI Hironobu
Neural mechanisms of cognition and behavior

HANAWA Kyoko
Molecular Mechanism of Signal Transduction
in Brain

HASHIMOTODANI Yuki
Molecular Mechanisms Underlying Synaptic
Plasticity

HAYASHI Kenji
Functional development of the mouse primary
visual cortex

IDE Kaoru
Understanding Cognitive and Behavioral
Functions of the Brain

ITO Yuki
Neural mechanism of multisensory integration

KAWANO Hiroyuki
Synaptic transmission in the central nervous
system

LI Ruixiang
Functional networks in the brain

MIYANO Rinako
Mechanisms of synaptic plasticity

MORISHIMA Mieko
The role of inhibitory neurons in brain neural
circuits

NISHIMURA Kaneyasu
Regeneration of neuronal function using human
induced pluripotent stem cells

OSAKI Hironobu
Neural circuits of pain recognition

SOBU Yuriko
Analysis of the migration mechanism of newborn
neurons in the adult brain

SHIMADA Yoko
Children and Sound Environment

Institute for Advanced Research and Education

ISHIKAWA Masamichi
Future Design for yourself

KAJIKI Shinya
History of Big Science, History of Energy
Conservation

KAMIURA Moto
Mathematical Informatics, Philosophy of
Information

ONISHI Yuko
Climate change impact assessment / Science-
society collaboration



Partner Institutions

International Cooperation on a University level

Europe

- **Azerbaijan**
Khazar University
- **Belgium**
Thomas More University of Applied Sciences
The Universite Libre de Bruxelles
- **Czech Republic**
Charles University
Masaryk University
University of West Bohemia
- **Denmark**
Aarhus University
- **Finland**
Tampere University
University of Eastern Finland
University of Helsinki
- **France**
Aix-Marseille Université
CentraleSupélec
École Centrale de Lille
École Centrale de Lyon
École Centrale de Marseille
École Centrale de Nantes
L'École des Hautes Etudes en Sciences Sociales
École Nationale Supérieure des Mines de Paris
Excelia Group
Institut d'Etudes Politiques de Lyon
Institut d'Etudes Politiques de Rennes
L'Institut d'Etudes Politiques de Saint-Germain-en-Laye
Institut National des Langues et Civilisations Orientales (INALCO)
Sciences Po
Sorbonne Université
Université Paris Nanterre
Université de Strasbourg
- **Germany**
Eberhard Karls Universität Tübingen
Heinrich Heine University Düsseldorf
Humboldt-Universität zu Berlin
Johann Wolfgang Goethe-Universität Frankfurt Am Main
Johannes Gutenberg-Universität Mainz
Karlsruher Institut für Technologie
Fakultät für Kulturwissenschaften, Ludwig-Maximilians-Universität München
Osnabrück University
- **Hungary**
Eötvös Loránd University
The University of Pécs
- **Ireland**
Faculty of Humanities and Social Sciences, Dublin City University

- **Italy**
Alma Mater Studiorum - Università di Bologna
Sapienza - Università di Roma
Università Ca' Foscari Venezia
Università degli Studi di Milano
Università di Torino
- **Kazakhstan**
L.N. Gumilyov Eurasian National University
- **Lithuania**
Vytautas Magnus University
- **Netherlands**
The Hague University of Applied Sciences
Universiteit Leiden
- **Norway**
Norwegian University of Science and Technology
University of Bergen
University of Oslo
- **Poland**
Jagiellonian University
University of Warsaw
- **Romania**
The University of Bucharest
- **Russia**
Saint Petersburg State University of Economics
Yaroslav-the-Wise Novgorod State University
- **Spain**
Universidad Catolica San Antonio de Murcia
Universidad de Salamanca
Universitat Autònoma de Barcelona
Universitat Pompeu Fabra
- **Sweden**
School of Business, Economics and Law, University of Gothenburg
- **Switzerland**
Universität Luzern
Universität Zürich
- **U.K.**
School of Oriental and African Studies (SOAS) - University of London
St Catharine's College, Cambridge
The University of Edinburgh
University of Essex
University of Leeds
University of Manchester
The University of Sheffield
University of Southampton
The University of Warwick
The University of York

Africa & Middle East

- **Egypt**
Alexandria University
- **Ethiopia**
Addis Ababa University
- **Israel**
The Hebrew University of Jerusalem
- **Kenya**
Strathmore University
- **Turkey**
Middle East Technical University
Sabanci University

Asia

- **China**
Beijing Normal University
The Chinese University of Hong Kong
Chongqing University of Posts and Telecommunications
City University of Hong Kong
Dalian University of Foreign Languages
The Education University of Hong Kong
Fudan University
Jilin University
Jinan University
Lingnan University
Northeast Normal University
Northwest University
Ocean University of China
Peking University
Department of History, Peking University
Renmin University of China
Sichuan University
Tianjin Foreign Studies University
Tsinghua University
Wuhan University
Xiangtan University
Xi'an Jiaotong University
Xidian University
Zhejiang A & F University
- **India**
Amrita University
- **Indonesia**
Universitas Gadjah Mada
Universitas Pendidikan Indonesia

● Korea

Chonnam National University
Ewha Womans University
Hankuk University of Foreign Studies
Incheon National University
Korea University
Seoul National University
Seoul Women's University
University of Seoul
Yeungnam University
Yonsei University

● Malaysia

International Islamic University Malaysia
Universiti Sains Malaysia
University of Malaya

● Mongolia

National University of Mongolia

● Nepal

Tribhuvan University

● Philippines

Ateneo de Manila University
De La Salle University
University of the Philippines Diliman

● Taiwan

Chinese Culture University
Fu Jen Catholic University
National Chengchi University
National Chung Cheng University
National Taiwan Normal University
National Taiwan University
National Tsing Hua University
Providence University
Soochow University
Tamkang University

● Thailand

Chulalongkorn University
Payap University
Thammasat University

● Vietnam

Foreign Trade University
Hanoi University
Hanoi University of Science and Technology
Ho Chi Minh City University of Technology

Oceania

● Australia

Charles Darwin University
Deakin University
Macquarie University
Murdoch University
The University of Melbourne
University of New England
The University of New South Wales
The University of Sydney
University of the Sunshine Coast
University of Wollongong

● New Zealand

Victoria University of Wellington

North, Central & South America

● Argentina

Universidad Torcuato di Tella

● Brazil

Universidade de São Paulo

● Canada

Acadia University
Bishop's University
Lakehead University
Royal Roads University
The University of British Columbia
Faculté des arts et des sciences Université de Montréal
University of Victoria
The University of Winnipeg

● Chile

Pontificia Universidad Católica de Chile

● Costa Rica

Universidad de Costa Rica

● Mexico

Universidad de las Américas, Puebla

● U.S.A.

Amherst College
Bates College
Bucknell University
Carleton College
Colby College
Connecticut College
Mount Holyoke College
Oberlin College
Pomona College
Smith College
Wesleyan University
Whitman College
Williams College
Boston University
Brown University
Columbia University (including Barnard College)
Cornell University
Emory University
Harvard University
Princeton University
Stanford University
The University of Chicago
University of Pennsylvania
University of Virginia
Washington University in St. Louis
Yale University
Arkansas Tech University
Embry-Riddle Aeronautical University
Kalamazoo College
Linfield University
Millikin University
Murray State University
Northeastern University
Portland State University
Rochester Institute of Technology
Salve Regina University
San Diego State University
St. Mary's University
University of California
University of California, Davis
University of Colorado Boulder
University of Denver
University of Hawai'i at Hilo
University of Hawai'i at Mānoa
University of Missouri
The University of Montana
University of Nebraska at Kearney
The University of New Orleans
The University of North Carolina at Charlotte
The University of Utah
Western Michigan University

Partner Institutions

International Cooperation on a Faculty / Graduate school and Research center level

* indicates International Cooperations on a research center level

Europe

● Austria

Technische Universität Wien

● Belgium

Université de Mons

● Czech Republic

Czech Technical University in Prague
Faculty of Mechanical Engineering,
University of West Bohemia

● Denmark

Department of Culture and Global Studies,
Aalborg University

● France

Toulouse 1 Capitole University
École Nationale Supérieure des Mines
d'Albi-Carmaux
CentraleSupélec
École Centrale de Lille
École Centrale de Lyon
École Centrale de Marseille
École Centrale de Nantes
École Nationale Supérieure de Chimie de
Lille
École Supérieure de Physique et de Chimie
Industrielles de la Ville de Paris
École Nationale Supérieure des Mines de
Paris
Department of Fundamental and
Biomedical Sciences, Faculty of Sciences,
Université Paris Cité
Faculty of Science and Engineering,
Sorbonne University
Faculty of Science, Polytech Marseille,
Aix-Marseille University
Université Paris Cité
L'École des Hautes Etudes en Sciences
Sociales
Centre d'études et de recherches sur les
qualifications *
Magellan Research Center, University
of Lyon and Research Institute for the
Management of Organizations, University
of Bordeaux *
Mathématiques Appliquées & Systems
Laboratory, Ecole Centrale Paris *

● Germany

The Faculty of Arts and Humanities,
University of Cologne
Graduate School for the Humanities
Cologne, University of Cologne
Mercator School of Management,
University of Duisburg-Essen
School of Business & Economics, Free
University of Berlin
Die Philosophische Fakultät der Heinrich-
Heine-Universität Düsseldorf
Fakultät 8 - Naturwissenschaftlich-
Technische Fakultät III, Universität des
Saarlandes
Faculty of Computer Science, Otto von
Guericke University Magdeburg
Institute of Sport and Exercise Sciences,
Faculty of Psychology and Sport Science,
University of Münster

Institute of Sports and Human Movements
Science at the Department of Education
and Cultural Studies, University of
Osnabrück

Institute of Sports Science, Faculty of
Economics and Social Sciences, Eberhard
Karls Universität Tübingen

Faculty of Law, Eberhard Karls Universität
Tübingen

Faculty of Economics and Social Sciences,
Eberhard Karls Universität Tübingen

Jena Center for Reconciliation Studies,
Friedrich Schiller University Jena *

● Italy

University of Siena
Department of Social and Political
Sciences, University of Milan
International University of Languages and
Media
University of Gastronomic Sciences
Politecnico di Milano
The Department of Sociology and Social
Research of the University of Trento

● Kazakhstan

KIMEP University

● Kyrgyzstan

Kyrgyz National University Named After
Jusup Balasagyn

● Netherlands

International Criminal Court
University College Maastricht, Maastricht
University

● Norway

Norwegian University of Science and
Technology
UiS Business School, University of
Stavanger

● Portugal

Instituto Superior Técnico

● Spain

ETSI Industriales, ETSI Telecomunicación
and ETSI Informáticos, Universidad
Politécnica de Madrid
Faculty of Physical Activity and Sports
Science, Universidad Politécnica de Madrid
IE University

● Sweden

School of Business, Economics and Law,
University of Gothenburg

● Switzerland

Faculty of Theology, the University of
Zurich
Faculty of Law, University of Zurich

● U.K.

Faculty of Social Sciences, University of Leeds
University of Stirling
School of Optometry and Vision Sciences,
Cardiff University
University of Southampton
The University of Sussex

Department of East Asian Studies,
University of Cambridge

The Department of Anthropology,
University College London

Africa & Middle East

● Egypt

Center of Oriental Studies, Cairo
University

● Iran

Bagher al-Oloum University
Faculty of Theology and Islamic Studies,
University of Tehran
Center for Strategic Research *

● Israel

Faculty of Humanities, University of Haifa
Faculty of Humanities, The Hebrew
University of Jerusalem
Department of East Asian Studies, Faculty
of Humanities, The Hebrew University of
Jerusalem

● Jordan

Royal Institute for Inter-Faith Studies

● Qatar

College of Humanities and Social Sciences,
Hamad Bin Khalifa University
Al Jazeera Center for Studies, Al Jazeera
Media Network *

● Turkey

Faculty of Electrical and Electronics
Engineering, Yildiz Technical University
Graduate School of Science and
Engineering, Yildiz Technical University
Ibn Haldun University

Asia

● China

School of Social Development and Public
Policy, Fudan University
School of Social and Public Administration,
East China University of Science and
Technology
China University of Political Science and
Law
School of Law, Yunnan University
Regional Office for Asia and the Pacific
of the Hague Conference on Private
International Law
Law School, Renmin University of China
School of International Studies, Renmin
University of China
Center for China Public Sector of Economy
Research, Jilin University
School of Economics, Jilin University
Institute of Political Sciences, Chinese
Academy of Social Sciences
School of Government, Peking University
School of Statistics, Renmin University of
China

College of Foreign Languages and International Studies, Hunan University
 School of Physics, Dalian University of Technology
 College of Engineering and College of Science, Shantou University
 Graduate School, Xi'an Jiaotong University
 Graduate School, Xidian University
 School of Biomedical Engineering, Dalian University of Technology
 Guangdong-Hongkong-Macau Institute of Central Nervous System Regeneration, Jinan University
 Medical College of Tianjin University
 School of Business, Renmin University of China
 School of Japanese Studies, Dalian University of Foreign Languages
 College of Foreign Language, Donghua University
 College of Foreign Languages and International Studies, Hunan University
 School of Languages, Northeastern University at Qinhuangdao
 College of Foreign Languages, Qingdao Agricultural University
 School of Japanese Studies, Shanghai International Studies University
 School of Oriental Language and Philosophy, Zhejiang Gongshang University
 Center for New Energy System and Energy Conservation Technology, Peking University *
 Hunan Key Laboratory for Computation and Simulation in Science and Engineering & Institute for Computational and Applied Mathematics, Xiangtan University*

● India

Asian-African Legal Consultative Organization
 Kalinga Institute of Industrial Technology
 The Center for Atmospheric and Energy Studies, Bharathiar University *

● Indonesia

Faculty of Social and Political Sciences, Hasanuddin University
 Faculty of Medicine, Udayana University
 Faculty of Economics and Business, Universitas Gadjah Mada
 Faculty of Law, Diponegoro University *
 Faculty of Law, Udayana University *
 Faculty of Law, Universitas Indonesia *
 Intellectual Property Right Lecturer Association *
 Universitas Pendidikan Nasional *

● Korea

Methodist Theological University
 Department of Social Welfare, College of Social Sciences, Chung-Ang University
 Division and Department of Social Welfare, Kangnam University
 College of Commerce and Economics, Kyungsung University
 School of Business, Yonsei University
 College of Social Sciences, Chungbuk National University

College of Political Science and Economics, Korea University
 College of Humanities and Arts, Yonsei University
 Konkuk University Law School
 Dongduk Women's University
 Seoul Theological University
 Sungshin University
 Institute of Humanities, Chosun University *
 Regional Innovation Center for Automobile Powertrains, Inha University *
 Center for East Asian History, Sungkyunkwan University *
 Center for Korean Studies, Inha University *
 Institute for Korean Studies, Yonsei University *
 Institute for the Study of Korean Modernity, Yonsei University *
 Institute of Humanities, Seoul National University *
 Institute of Social Sciences, Sogang University *
 Korea Institute of Foreign Relations, Dongguk University *
 Research Institute of Korean Studies, Korea University *
 Research Institute of Personal Document and Compressed Modernity, Chonbuk National University *

● Malaysia

School of Management, Universiti Sains Malaysia
 School of Mathematical Sciences, Universiti Sains Malaysia

● Philippines

School of Science and Engineering, Ateneo de Manila University, Philippines
 University of the Philippines Los Banos

● Taiwan

College of Liberal Arts, National Chengchi University
 Law School, National Chung Cheng University
 School of Law, Soochow University
 College of Management, National University of Kaohsiung
 College of Liberal Arts, National Sun Yat-sen University
 College of Humanities and Social Sciences, National University of Kaohsiung
 College of Foreign Languages and Literatures, Tamkang University
 Institute of Statistical Science, Academia Sinica
 College of Arts, Tunghai University
 College of Management, National Taiwan Normal University
 Department of Applied Japanese, School of Education and Applied Languages, Ming Chuan University
 Department of Japanese Language and Literature, School of Foreign Language and Culture, Soochow University
 Sustainable Electrochemical Energy Development Center, National Taiwan University of Science and Technology

● Thailand

Arsom Slip Institute of the Arts
 Faculty of Law, Thammasat University
 Faculty of Economics, Chulalongkorn University
 King Mongkut's Institute of Technology Ladkrabang
 Faculty of Medicine, Khon Kaen University
 School of Allied Health Sciences, Walailak University
 Faculty of Medicine, Khon Kaen University *

● Vietnam

School of Law, Vietnam National University, Hanoi
 Faculty of Law of National Economics University, Hanoi
 Faculty of Urban & Environment of National Economics University, Hanoi
 School of Electrical Engineering, Hanoi University of Science and Technology
 University of Law, Hue University *

North, Central & South America

● Canada

Faculté de Droit, Université de Montréal
 Polytechnique Montréal
 Acadia University

● Ecuador

FLACSO Ecuador (Facultad Latinoamericana de Ciencias Sociales Sede Ecuador)

● Mexico

Centro de Investigaciones y Estudios Superiores en Antropología Social (CIESAS)

● U.S.A

Hartford Seminary
 Graduate Theological Union
 James E. Rogers College of Law, The University of Arizona
 Division of International Education, The University of New Orleans
 College of Arts and Letters, Michigan State University
 College of Arts and Sciences, The University of North Carolina at Chapel Hill
 Duke Law School
 Michigan State University College of Law
 The Straus Institute for Dispute Resolution at the School of Law, Pepperdine University
 The University of California Hastings College of the Law
 National Fuel Cell Research Center, University of California, Irvine *

Data Sheet as of May 2024

Students

	Undergraduate			Graduate											
				Master's Program			Doctoral Program			Five-Year Doctoral Program			Professional Program		
	Men	Women	Total	Men	Women	Total	Men	Women	Total	Men	Women	Total	Men	Women	Total
Theology	133	151	284	16	5	21	10	8	18						
Letters	1,202	1,795	2,997	28	29	57	20	15	35						
Social Studies	787	1,064	1,851	15	36	51	20	25	45						
Law	2,048	1,564	3,612	69	57	126	11	7	18						
Economics	2,541	1,218	3,759	15	5	20	5	7	12						
Commerce	2,046	1,595	3,641	7	4	11	2		2						
Policy Studies / Policy and Management	857	919	1,776	34	30	64	25	19	44	0	1	1			
Culture and Information Science	703	569	1,272	29	15	44	6	7	13						
Science and Engineering	2,678	564	3,242	613	90	703	32	7	39						
Life and Medical Sciences	619	399	1,018	156	80	236	14	4	18						
Health and Sports Science	604	330	934	14	9	23	16	3	19						
Psychology	224	424	648	3	14	17	6	8	14						
Global Communications	224	424	648						0						
Global and Regional Studies	268	564	832			0			0						
Global Studies			0	30	59	89	28	35	63						
Brain Science			0			0			0	20	6	26			
Law School			0			0			0				106	61	167
Business School			0	37	56	93			0				87	34	121
Total	14,934	11,580	26,514	1,066	489	1,555	195	145	340	20	7	27	193	95	288

		Men	Women	Total
Center for Global Education and Japanese Studies	Students who take Global Education Module (GEM)	27	36	63
	Students who take Japanese Language and Culture Module (Nichibun)	71	132	203
	Students studying at foreign institutions at Doshisha	18	23	41

※Number of students who enroll in Center for Global Education (CGE) is included in GEM.

※Number of students who enroll in Center for Japanese Language and Culture (CJLC) is included in Nichibun.

International Students by Country and Region

Korea	461	Switzerland	6	Mozambique	2	Ireland	1
China	458	Finland	5	Nepal	2	Kazakhstan	1
U.S.A.	112	Afghanistan	4	Netherlands	2	Kuwait	1
Taiwan	47	Denmark	4	Pakistan	2	Kyrgyz	1
France	32	Japan	4	Poland	2	Lithuania	1
Germany	26	Mexico	4	Russia	2	Malawi	1
Thailand	20	South Africa	4	Somalia	2	Nigeria	1
Italy	16	Malaysia	3	Sweden	2	Palestine	1
U.K.	14	Mongolia	3	Tanzania	2	Panama	1
Australia	11	Morocco	3	Belgium	1	Papua New Guinea	1
Vietnam	11	Timor-Leste	3	Cambodia	1	Republic of Congo	1
Indonesia	9	Tunisia	3	Cameroon	1	Romania	1
Spain	9	Uganda	3	Dominican Republic	1	Serbia	1
Myanmar	8	Argentina	2	Ecuador	1	Singapore	1
Norway	8	Austria	2	Egypt	1	Turkey	1
Bangladesh	7	Brazil	2	El Salvador	1	Ukraine	1
India	7	Czech Republic	2	Guatemala	1	Zimbabwe	1
Philippines	7	Iran	2	Hungary	1	Total	1,375
Canada	6	Israel	2	Iceland	1		

Academic and Administrative Staff

Faculty and Academic Staff

Faculty		Administrative Staff	
Full-time Faculty	781	Full-time Staff Members	545
Part-time Lecturers	1,511	Part-time Staff Members	435
Total	2,292	Total	980

Nationalities: Australia, Bangladesh, Belgium, Bolivarian Republic of Venezuela, Bulgaria, Cambodia, Canada, China, Colombia, Egypt, Federative Republic of Brazil, Federal Republic of Nigeria, France, Germany, Greece, India, Indonesia, Ireland, Israel, Islamic Republic of Iran, Italy, Jamaica, Kingdom of the Netherlands, Korea, Lao People's Democratic Republic, Malaysia, New Zealand, Peru, Philippines, Puerto Rico, Republic of Finland, Republic of Mali, Romania, Russia, Spain, Switzerland, Taiwan, Turkey, U.K., Ukraine, and U.S.A.

Land Area

Imadegawa Campus	76,946m ² (18.9 acres)
Shinmachi Campus	16,311m ² (4.0 acres)
Karasuma Campus	7,758m ² (1.9 acres)
Kyotanabe Campus	786,660m ² (194.4 acres)
Kansai Science City Campus	50,964m ² (12.59 acres)

Total Budget

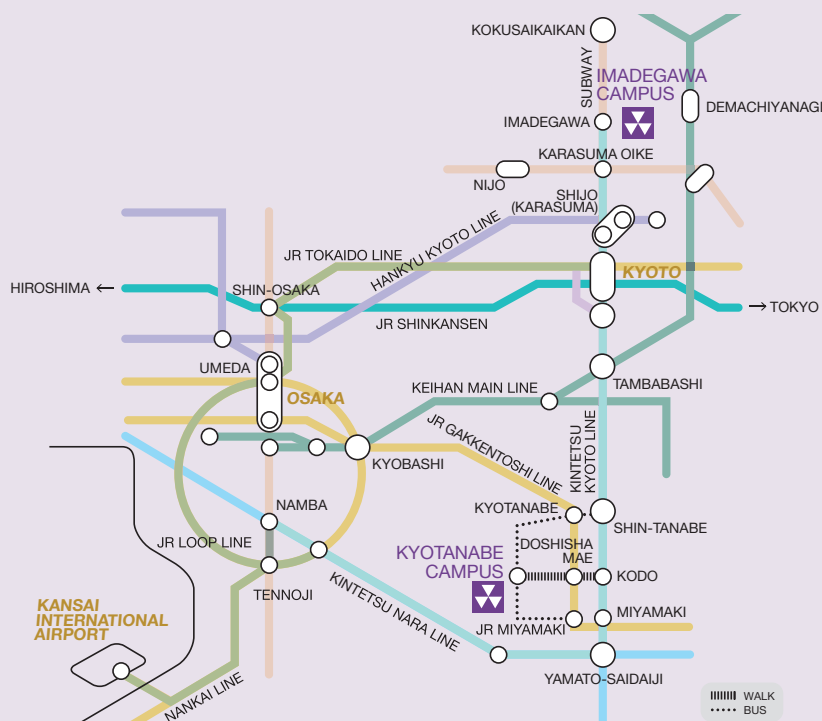
Expenses

Personnel	21,489 million yen
Education & Research	16,263 million yen
Administration	1,826 million yen
Facility-related Expenditure	4,532 million yen
Equipment-related Expenditure	1,072 million yen
Debt Repayment	0 million yen
Accumulative Fund for Facility & Equipment Acquisition	1,400 million yen
Accumulative Reserve for Fund Increase	0 million yen
Other Expenditure	1,719 million yen
Total	48,301 million yen

Income

Tuition & Fees	33,643 million yen
Entrance Examination Fees	1,712 million yen
Donations	511 million yen
Subsidies	3,658 million yen
Interest and Dividends Income	307 million yen
Other Income	7,964 million yen
Total	47,795 million yen

Directions

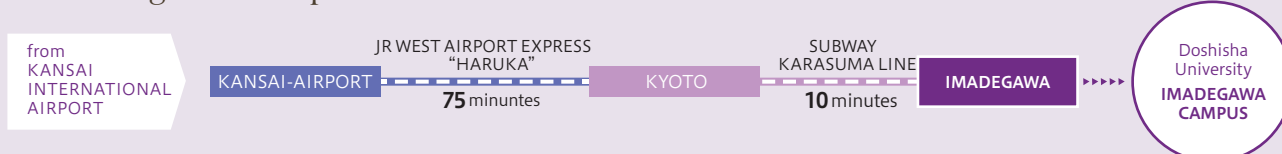


Imadegawa Campus



Kyotanabe Campus

To Imadegawa Campus



To Kyotanabe Campus



International Center

Office of International Affairs

Telephone: +81-75-251-3260 Fax: +81-75-251-3057
 Email: ji-kksai@mail.doshisha.ac.jp
 Karasuma-Higashi-iru, Imadegawa-dori, Kamigyo-ku,
 Kyoto 602-8580, Japan

Office of International Students

Telephone: +81-75-251-3257 Fax: +81-75-251-3123
 Email: ji-ois@mail.doshisha.ac.jp



Doshisha University Website

<https://www.doshisha.ac.jp>

2024-2025