

良心
充満
己身
文
地
来
三丁
可

新島襄



**DOSHISHA
UNIVERSITY**

SINCE 1875 / Kyoto, Japan

Approx.

360,000



Alumni and 84 Branches of Doshisha Alumni Association
around the world (as of April 2023)



More than

90%

of International
Students receive
Scholarship



28,354

Undergraduate and Graduate Students





148

Years of history



1st

University to provide
education based on
Christian principles
in Japan



330+

Partner
Institutions

CONTENTS

- 02 Doshisha at a Glance
- 04 Live in Kyoto and Study at Doshisha
- 06 Heart of Doshisha
-The Vision of Joseph Hardy Neesima-
- 08 Spirit of Doshisha
- 09 Message from the President
- 10 Doshisha EU Campus at
Tübingen University
Overseas Offices
- 11 Academic Structure
- 12 Undergraduate School and Faculties
- 16 Graduate Schools
- 20 Degree Courses and Programs
Offered in English
- 22 Inbound Programs
- 23 Scholarships
International Cultural Exchange Event
- 24 Student Support
- 25 Foreign Institutions at Doshisha
Outbound Programs
- 26 Organization for Research
Initiatives and Development
- 28 Research Institutes and Centers
- 29 Directory of Academic Staff
- 42 Partner Institutions
- 46 Data Sheet
- 47 Directions

DOSHISHA at a Glance

Live in Kyoto and Study at

Feel the tradition and innovation...

Kyoto is a unique place. In Kyoto, where it prospered as Japan's capital for over 1000 years, you can experience Japanese traditional culture and history that the place succeeded to the present day in everyday life. Taking a break after classes at one of many World Heritage sites can be your daily life.

At the same time, Kyoto is a highly modern city. Many companies that have the largest domestic and/or global market share started from this region, making use of the technologies and craftsmanship cultivated in traditional industries. World-famous companies like Nintendo, Kyocera, Omron and many more that we are proud to present were born right here. Doshisha University shares the feature – Inside our traditional red brick buildings, which some of them are designated as the country's important cultural properties, most advanced education and research is provided. It is a place where tradition and innovation coexists.

in a student/ foreigner friendly, safe environment.

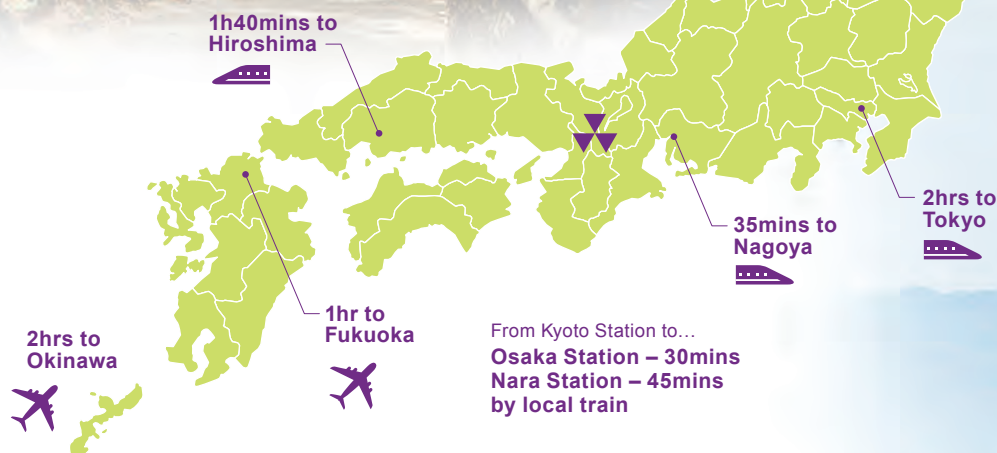
Kyoto is not only a popular tourist destination but also a place chosen for study abroad. About 10,000 foreign students from around the world are studying here.

Imadegawa Campus, one of our two main campuses, is located right in the heart of Kyoto City which often is referred to as "Student City", for 1 in 10 resident is a college student. Kyotanabe Campus, the other main campus, is located in Kyotanabe City. This city in the southern Kyoto, with a population of 74,000, is blessed with nature while it is conveniently surrounded by Kyoto, Osaka and Nara (just about half an hour reach to these cities). About 9,000 Doshisha students study at this campus daily. The areas of both campuses are extremely convenient for students, with many apartments, restaurants, shops and entertainments for students. Compared to big cities like Tokyo and Osaka, living expenses in Kyoto is relatively low.

Also... why not explore Japan while you are here?

Japan is not a very large country but it extends from east to west and north to south. The climate varies greatly in east and west, north and south, and by the Pacific Ocean/Japan Sea attaching or not. This climate and geographical diversity brings wide variety of culture that can be seen in food, dialects and lifestyle.

As you can see, Kyoto is at about the center of Japan. If you wish to explore Japan on weekends and long vacations, take bullet train (Shinkansen) from Kyoto Station or in the case of flights, there's an international airport in Osaka which is right next to Kyoto. Base in Kyoto and explore Japan!

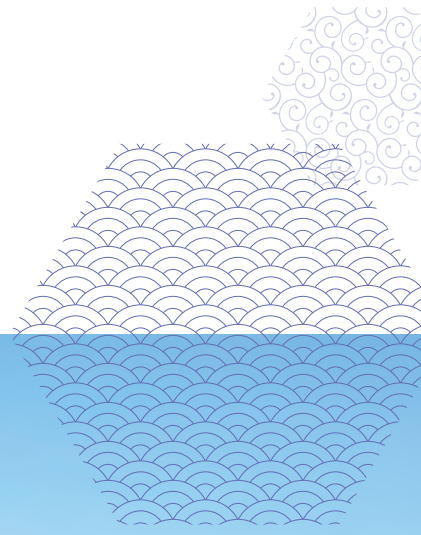


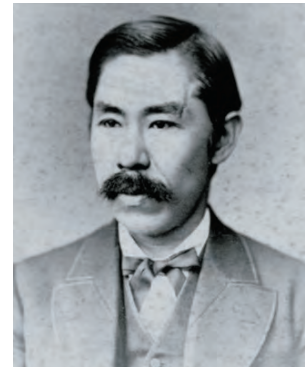
Doshisha



Heart of Doshisha

- The Vision of Joseph Hardy Neesima -





The founder of Doshisha University, Joseph Hardy Neesima (Jo Nijijima) was born as a son of a samurai in 1843. Due to the social circumstances of that time, he had a serious concern about the future of Japan and realized the importance of studying in Western countries. Neesima left Japan for America in 1864, defying an overseas travel ban. He had begun his adventure in Shanghai and boarded a ship, the Wild Rover, bound for Boston.

Under the benevolent support of A. Hardy, the owner of the Wild Rover, Neesima studied at Phillips Academy and Amherst College. He returned to his homeland after ten years with a strong ambition to establish a Christian university as well as to spread Christianity.

Upon returning to Japan, Neesima established Doshisha Eigakko (Academy) in 1875.

He wished not only to nurture individuals with diverse skills and abilities but also to nurture those who would put their conscience into practice. He died in 1890, at the age of 46, without fulfilling his ambition. However, his students and those who had the same ambition passed on his legacy and established Doshisha University in 1912.

Doshisha will celebrate its 150th anniversary of establishment in 2025.

As a milestone toward the realization of the “ideal education” that we aim for, VISION 2025 below summarizes what Doshisha should look like at the time of its 150th anniversary. Neesima’s spirit are expressed as 6 visions, forming a rudder that will lead Doshisha University to the path we should take.

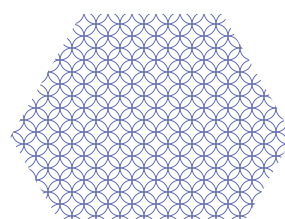
1. Pioneer new learning methods
2. Improve the quality of campus life
3. Advance creativity and collaboration in research
4. Welcome motivated students
5. Further evolve internationalism
6. Develop our brand strategy



<https://doshisha-vision2025.jp/en/> ▶▶

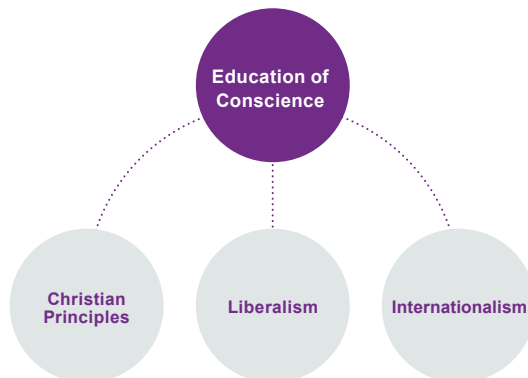


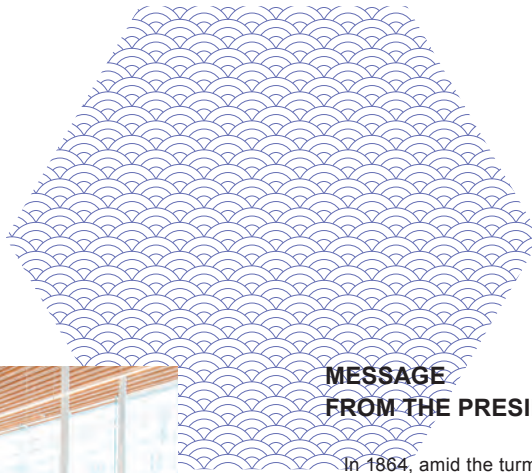
<https://www.doshisha.ac.jp/en/information/history/neesima/neesima.html> ▶▶



Spirit of Doshisha

For the past 148 years, Doshisha University has been committed to the idea of “education of conscience,” or nurturing “those who use their abilities as conscience dictates.” University founder Joseph Hardy Neesima’s educational philosophy is encapsulated in the words engraved on the memorial monument at the main gate of Imadegawa and Kyotanabe campuses, which read, “I earnestly desire that many young people filled with conscience will be raised and sent out by our school.” Doshisha has indeed sent many promising graduates out into the world since its Neesima’s time. The spiritual pillars of our educational activities: “Christian principles,” “liberalism,” and “internationalism” reflect this background.





MESSAGE FROM THE PRESIDENT

In 1864, amid the turmoil toward the end of the Tokugawa shogunate, Joseph Hardy Neesima directed his gaze to the rest of the world, broke the national ban on international travel by leaving Japan, and set off for the United States. After extensive studies at Amherst College, he returned to Japan and in 1875 founded Doshisha Eigakko (Academy), the predecessor of Doshisha University. In *The Aim in Establishing Doshisha University*, which was published in November 1888, he wrote: "A nation is upheld in prosperity not by the work of a few great men, but depends for this on men of wisdom and character who might be called the conscience of the nation. It is my desire and purpose to provide such men for the nation."

Carrying on the thinking of Neesima, who aspired to the all-round education of individuals equipped with both knowledge and virtue, Doshisha University practices conscience education taking Christian principles, liberalism, and internationalism as its underlying philosophy. It prizes the virtues rooted in a love of truth and deep humanity, the spirit of respecting individuality and cherishing each and every person, and the ability to view the world from a broad perspective, and has been sending graduates instilled with these properties out into the world. Its many alumni now active in various fields in society are proof of the quality of a Doshisha education.

Asked by the statesman Katsu Kaishu how many years it would take to complete Doshisha on the occasion of their first meeting, Neesima reportedly replied that Doshisha would have to wait 200 years for its completion (according to *Neesima Sensei Genkoroku* (Record of the Words and Deeds of Mr. Neesima) by Seiji Ishizuka). There is a different version of this story; in *Shinko to Riso* (Christian Faith) by former Doshisha University president Tasuku Harada, Katsu asks Neesima in how many years he intended to have the education he desired spread throughout Japan, and Neesima immediately replies, "About 300 years." If this latter version is true, then Doshisha University shall continue to steadily progress while looking far into the future and the 300th anniversary of its founding, with its 200th anniversary in 2075 being just another milestone it passes along the way.

Note: The English titles of books in brackets are tentative translations for works available only in Japanese.



UEKI Tomoko

President of
Doshisha University

Doshisha EU Campus at Tübingen University

Doshisha EU Campus at Tübingen University, our first overseas campus is located within the precincts of Tübingen University in Germany.

The utilization of the EU Campus in the following ways is a major pillar of our "Doshisha Vision 2025"

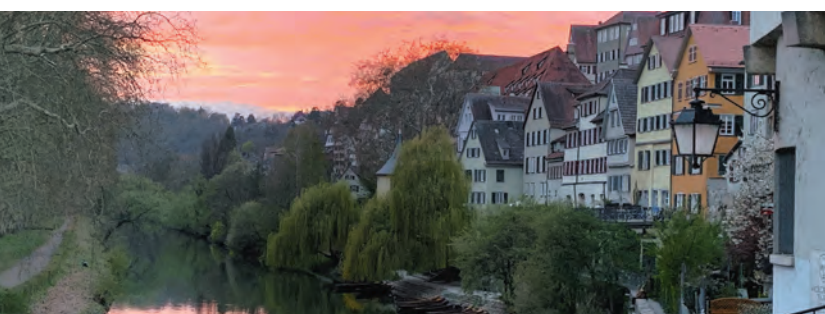
1. Developing academic exchanges and educational activities not only in the comparative study of Japan, Germany, and Europe, but also generally in various fields such as theology, philosophy, ethics, history, literature, education, psychology, sociology, anthropology, archaeology, law, political science, economics, commerce, life and medical sciences, science and engineering, culture and information science, health and sports science, global studies, the study of "conscience", and conflict studies.
2. Promoting cooperation with diverse, world-class universities and

research institutes across Europe, in addition to further strengthening the existing partnership with Tübingen.

3. Improving the dissemination in English of information on Doshisha research and educational activities.

4. Enhancing the educational environment for Doshisha students at the EU Campus by creating learning opportunities with Tübingen students who have studied at the Tübingen Center for Japanese Studies at Doshisha University and also offering specialized undergraduate courses after 2020 in addition to general and liberal education courses.

EU Campus Fellow, locally hired academic staff, and staff from the Office of International Affairs at Doshisha University (pictured below, left to right) are stationed in Tübingen to support Doshisha students and faculty in their activities in Tübingen, as well as various exchanges between the two universities.



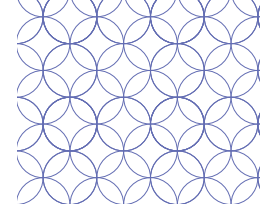
Overseas Offices

Doshisha University's overseas offices were established in order to further promote rapid and effective internationalization. We mainly use them to implement public relations activities to increase the profile of Doshisha University, while at the same time, making the most of characteristics unique to each local. In addition, we are undertaking various efforts to recruit overseas students, support our students while they are studying overseas, and provide on-site support to members of our faculties while they are overseas.

Overseas Offices
[As of June 2023]

- Taipei (Taiwan)
- Seoul (South Korea)
- Tübingen (Germany)

Academic Structure



Undergraduate School and Faculties

	Departments
School of Theology	> Theology
Faculty of Letters	> English > Philosophy > Aesthetics and Art Theory > Cultural History > Japanese Literature
Faculty of Social Studies	> Sociology > Social Welfare > Media, Journalism and Communications > Industrial Relations > Education and Culture
Faculty of Law	> Law > Political Science
Faculty of Economics	> Economics
Faculty of Commerce	> Commerce
Faculty of Policy Studies	> Policy Studies
Faculty of Culture and Information Science	> Culture and Information Science
Faculty of Science and Engineering	> Intelligent Information Engineering and Sciences > Information Systems Design > Electrical Engineering > Electronics > Mechanical and Systems Engineering > Mechanical Engineering and Science > Molecular Chemistry and Biochemistry > Chemical Engineering and Materials Science > Environmental Systems Science > Mathematical Sciences
Faculty of Life and Medical Sciences	> Biomedical Engineering > Biomedical Sciences and Informatics > Medical Life Systems
Faculty of Health and Sports Science	> Health and Sports Science
Faculty of Psychology	> Psychology
Faculty of Global Communications	> Global Communications
Faculty of Global and Regional Studies	> Global and Regional Studies
The Institute for the Liberal Arts	
Center for Global Education	
Center for Japanese Language and Culture	

Graduate Schools

	Master's Programs	Doctoral Programs
Graduate School of Theology	> Theology	> Theology
Graduate School of Letters	> Philosophy > English Literature and English Linguistics > Cultural History > Japanese Literature > Aesthetics and Art Theory	> Philosophy > English Literature and English Linguistics > Cultural History > Japanese Literature > Aesthetics and Art Theory
Graduate School of Social Studies	> Social Welfare > Media Studies > Education and Culture > Sociology > Industrial Relations	> Social Welfare > Media Studies > Education and Culture > Sociology > Industrial Relations
Graduate School of Law	> Political Science > Private Law > Public Law	> Political Science > Private Law > Public Law
Graduate School of Economics	> Economic Theory > Applied Economics	> Economic Policy
Graduate School of Commerce	> Commerce	> Commerce
Graduate School of Policy and Management	> Policy and Management > Technology and Innovative Management (Five-Year Doctoral Program)	> Policy and Management
Graduate School of Culture and Information Science	> Culture and Information Science	> Culture and Information Science
Graduate School of Science and Engineering	> Information and Computer Science > Electrical and Electronic Engineering > Mechanical Engineering > Applied Chemistry > Science of Environment and Mathematical Modeling	> Information and Computer Science > Electrical and Electronic Engineering > Mechanical Engineering > Applied Chemistry > Science of Environment and Mathematical Modeling
Graduate School of Life and Medical Sciences	> Biomedical Engineering and Informatics > Medical Life Systems	> Biomedical Engineering and Informatics > Medical Life Systems
Graduate School of Health and Sports Science	> Health and Sports Science	> Health and Sports Science
Graduate School of Psychology	> Psychology	> Psychology
Graduate School of Global Studies	> Global Studies	> Global Studies
Graduate School of Brain Science	> Brain Development and Aging (Five-Year Integrated Doctoral Program)	
Law School	> Law School (Professional Graduate School)	
Graduate School of Business	> Business Studies (Professional Graduate School) > Global Business and Management Studies	

Undergraduate School and Faculties

School of Theology

Since its foundation in 1875, the School of Theology has established itself as a pioneer in the field of Christian theology in Japan, where the number of institutions offering opportunities to study religions academically is limited. A thorough study of religion leads to a deeper and more comprehensive understanding of human beings and their societies, cultures, and histories.

Since 2003, the School of Theology has been vigorously promoting interdisciplinary studies of three monotheistic religions: Judaism, Christianity, and Islam. Followers of Judaism, Christianity, or Islam together make up 55 percent of the world's total population. To understand the current situation of the world, it is essential to gain a clear understanding of the Abrahamic religions. The School of Theology aims to play a role as "mediator" in achieving peace and mutual understanding between the world's regions and civilizations. At the School of Theology, the number of compulsory courses is reduced to a minimum so that students can freely organize their own curriculum depending on their concerns. Students can also improve their linguistic ability needed to study the three Abrahamic religions of Hebrew, Koine Greek, and Arabic.

The School of Theology has fostered numerous "professionals with values," including ministers, teachers, social workers, and counselors working at hospitals and welfare facilities.

<https://theo.doshisha.ac.jp/en> ▶▶



Faculty of Social Studies

Social studies is concerned with how our everyday life is affected by our environment and the ties we create with it. The Faculty of Social Studies encourages students to pursue issues related to contemporary society and to foster an understanding of the processes that shape social networks, communities and institutions in an increasingly globalized world. Social studies covers the whole range of human behaviour ranging from regional conflicts, labour alienation and unemployment to changing notions of the family, aging societies and the welfare state. The Faculty of Social Studies is broad-based and offers majors in five areas: Sociology, Social Welfare, Media, Journalism and Communications, Industrial Relations, and Education and Culture. A course in social studies will enable students to use a broad range of analytical tools and to think critically about contemporary social problems in a stimulating setting. We place emphasis on instruction in small groups and personal guidance by faculty members and student tutors. Both theoretical training and practical experience are creatively combined to create a holistic learning experience. Whether in fieldwork, social surveys or quantitative analysis, our graduates will acquire the skills needed to conduct successful inquiries into the nature of society from a humanistic point of view.

<https://ss.doshisha.ac.jp> ▶▶
JAPANESE ONLY



Faculty of Letters

The Faculty of Letters consists of five departments: English, Philosophy, Aesthetics and Art Theory, Cultural History, and Japanese Literature. All have a common purpose: to encourage students to seek for themselves the meaning and value of the humanities—and, indeed, to ask themselves what it means to be human. The philosophy of Joseph Hardy Neesima, rooted in mutual respect and understanding, on the basis of Christianity still animates classrooms in the Faculty of Letters. Small-sized seminars—typically of ten to twenty students—offer students and faculty alike a unique opportunity to exchange and develop ideas. While pursuing their major course of study, students in the Faculty of Letters may also register in our Minor Degree Program. Complementing their major with a minor field of study, students can expand their academic interests and widen their intellectual horizons.

<https://letters.doshisha.ac.jp> ▶▶
JAPANESE ONLY



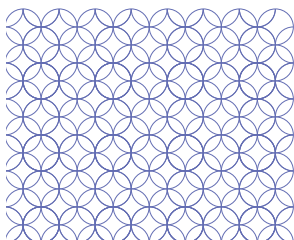
Faculty of Law

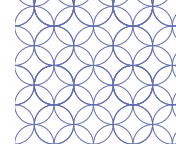
The goal of the Faculty of Law is to equip students with the ability to identify problems in various social spheres and provide adequate solutions based on the concept of the "legal mind" essential to solving problems with sound judgment and a sense of fairness. The Faculty's education provides students with a broad-ranging and highly relevant qualification that will prove invaluable for professional careers in many different fields.

The Faculty consists of the Department of Law and the Department of Political Science. The main characteristic of the curriculum of the Department of Law is the "step-up system," in which students take introductory subjects, basic subjects, and advanced subjects, step by step. The advanced subjects cluster offers a choice of four models, enabling students to acquire specialized knowledge according to their individual interests and career options.

The curriculum of the Department of Political Science is also based on the "step-up system." Students have a choice of three core-course advanced subject areas: International Relations, Modern Political Science, and History and Thought. By choosing one of the three subject areas, students can assimilate advanced specialist knowledge in step with their own personal interests and with their future careers in mind.

<https://law.doshisha.ac.jp> ▶▶
JAPANESE ONLY





Faculty of Economics

The Faculty of Economics is an educational body that emphasizes its ongoing contributions to the improvement of economic competition, advancement of social justice, reduction of poverty, and promotion of creativity and arts. To realize this mission, we have cultivated an educational approach that facilitates the ability to identify economic issues in contemporary society, rigorously analyze them using various scientific techniques, and develop advanced capabilities in the evaluation of public policies.

The faculty's strength lies in its highly-qualified research professors teaching a variety of subjects, such as macroeconomics, microeconomics, econometrics, environmental economics, public economics, cultural economics, institutional economics, economic history, development economics, game theory, industrial organization, international trade and finance, and labor economics.

The most important aspect of our learning approach for improving students' skills in logical and analytical thinking was developed during our seminars. In seminars, students are required to collect relevant materials, analyze quantitative and qualitative data, construct theoretical models, and investigate unsolved challenges in small groups. These intensive activities establish an innovative and impactful environment of active and interactive learning. Our sophisticated curriculum is devised for students to acquire advanced IT skills in addition to building advanced capabilities in the economics field.

<https://www.econ.doshisha.ac.jp/en> ▶▶



Faculty of Policy Studies

The Faculty of Policy Studies seeks to foster resourceful and ambitious students who are capable of resolving local as well as global issues. Such talents with diverse perspectives are in high demand throughout all domains of our society.

Inter-Disciplinary Studies in Social Science and Problem-Solving Exercises

Our program provides theoretical backbone and analytical practice through a wide range of lectures and classes, which consolidate economics, law, organizational theory, and politics and public administration. The students are expected to broaden their perspectives starting from introductory courses to further specialized subjects. Our small-scale classes, starting in the first year, provide opportunity to practice debates and problem-solving exercises, thereby focusing on some social issues.

To Be an Intelligent Decision-Maker in Private and Public Sectors

It is the skills they can develop throughout our program – providing solutions to problems with balanced points of view – that help students play a leading role in such areas as business, journalism, NPO/NGOs, politics and public administration. The Faculty of Policy Studies will be the perfect choice for those who are willing to expand their fields of interests, acquire practical skills in analyzing social issues, and contribute to solving various problems in our society.

<https://policy.doshisha.ac.jp> ▶▶
JAPANESE ONLY



Faculty of Commerce

The Faculty of Commerce aims to produce graduates who have acquired: basic knowledge of industrial and economic issues and activities; the ability to analyze issues associated with enterprise and industry; and effective problem-solving and decision-making skills. We seek to achieve these aims by providing systematic educational policy on our areas of expertise including commerce, finance, marketing, international business, business administration, accounting, economics, and so forth. Students are to take foundational classes in basic subjects in their first year and advanced classes in core subjects starting in their second year. In the spring term of their third year, students can select two core subject clusters from a choice of five, depending on their individual educational goals. From that point forward, they strive to improve their specialist knowledge through the organized study of a broad variety of subjects (including subjects outside their chosen clusters) albeit with emphasis on their chosen clusters. In addition, new subjects with fresh content are introduced from time to time in response to changing trends and expectations. Special features of the faculty are: classes offering firsthand experience on the forefronts of the business scene; an emphasis on the 'first-year experience' that stimulates the desire to learn; support for students seeking careers as business professionals.

<https://com.doshisha.ac.jp> ▶▶
JAPANESE ONLY



Faculty of Culture and Information Science

The Faculty of Culture and Information Science, established in 2005, attracts approximately 300 undergraduate students worldwide each year. Our primary goal is to nurture specialists who possess the ability to comprehend and analyze culture as a subject, utilizing the methodologies of data science. To achieve this, we offer a diverse range of lectures encompassing academic fields such as cultural resource studies, linguistics, and behavioral data science. Additionally, we provide opportunities for our students to develop their knowledge and skills in data science, including mathematics, statistics, and computer science.

Once equipped with these essential skills and a growing interest in various aspects of culture, our students have the chance to engage in the "Research Seminar" program during their third academic year. This program allows them to refine their research methods and skills, preparing them for their final academic year when they undertake their graduation research. We take great pride in nurturing highly skilled young scholars who possess a broad understanding of diverse cultures. These individuals are poised to lead global advancements across numerous domains, including academia, media, business, and the IT industry in the years ahead.

<https://www.cis.doshisha.ac.jp/english/> ▶▶



Undergraduate School and Faculties

Faculty of Science and Engineering

To meet societal demands, the Faculty of Science and Engineering provides “Education of Conscience” in accordance with our basic philosophy of “Using science and technology to benefit the people.” We believe that a high standard of ethics and a strong sense of humanity are essential for correctly grasping the problems that confront society today, and for responding appropriately to technological advances and changing needs. The Faculty offers a broad variety of subjects in natural and human sciences and other fields in addition to specialized subjects. Our curriculum is designed to encourage student individuality and impart a multilateral perspective.

Another major focus of our curriculum is to strengthen students’ academic foundations. We provide small classes to ensure that, while developing individual character and basic competences, students acquire a deep interest in MONOZUKURI, the “art” in making things, enabling them to more effectively use their learning for the good of society.

For its part, the Faculty is proud to have world-class laboratory facilities and equipment, and collaborates extensively with private enterprises and other universities. By imparting education that cultivates a deep sense of ethics, and by promoting world-leading research activities, the Faculty seeks to foster engineers and scientists with interdisciplinary and global perspectives, serving in the international arena.

<http://www.doshisha.ac.jp/en/academics/undergrad/engineering>
JAPANESE ONLY



Faculty of Health and Sports Science

Three Main Fields and Classes for Free Selection

Health and Sports Science is one of the wide-ranging academic fields. The Faculty of Health and Sports Science offers three main academic fields; Health Science, Training Science and Sports Management. Selection of the three fields is freely opened to the students. Depending on each student’s aspiring career path and purposes, students can focus on a single field or choose classes across the three fields.

Cultivate Individuals Who Can Contribute to Health Promotion and Development of Sports Environment

As a result of drastic changes in lifestyle and the aging society, sports play an important role to improve quality of life and promote health. The main concept of the Faculty of Health and Sports Science is to cultivate various human resources capable of contributing to health promotion and development of social environment in sports.

New Learning Experience and Well-Developed Research Environment Inside and Outside Campus

The Faculty of Health and Sports Science is located at the Kyotanabe Campus. The facility is equipped with various instruments for physiological, biological, and biomechanical research. We aim to develop a research environment of life science and medicine by cooperating with research and medical institutions inside and outside the university.

<https://sports.doshisha.ac.jp/en>



Faculty of Life and Medical Sciences

To prepare future top researchers and engineers in the biomedical fields, the Faculty of Life and Medical Sciences offers integrated, multidisciplinary educational programs that cover medical, biological and engineering topics.

Department of Biomedical Engineering provides a multidisciplinary education to prepare professional engineers who will develop innovative future life technologies. The curriculum for this course focuses on mechanical engineering, and offers diverse perspectives for next-generation engineers.

Department of Biomedical Sciences and Informatics also provides an excellent curriculum in the fields of electrical engineering and information technology which are essential subjects for the development of future medical diagnostic systems.

Department of Medical Life Systems offers diverse curricula in medical sciences. This course provides a multidisciplinary education leading students to become professional researchers in diverse fields which require specialized knowledge and technology in basic medical sciences.

Linked with our graduate studies program, these well-organized curricula will foster future researchers.

The Faculty of Life and Medical Sciences also offers a unique double-degree study abroad program that gives students invaluable experience.

<https://biomedical.doshisha.ac.jp/en/overview/concept.html>



Faculty of Psychology

The Faculty of Psychology at Doshisha University provides a systematic education of specialized knowledge and skills in psychology. The emphasis has been placed on empirical approach to the understanding of mind and behavior. In addition to the lecture courses, practice in psychological assessments, statistical analysis, and fundamental and advanced experiments are also required for all students. The Faculty of Psychology offers three courses: the Neuropsychology and Behavioral Psychology Course, the Clinical and Social Psychology Course, and the Developmental and Educational Psychology Course, providing students with a broad range of expertise that cut across these traditional areas of psychology.

Education in Small-Size Classes

Classes are set up, so all undergraduates, from first-year students to fourth-year students, study in small-size classes. This ensures that each student receives extensive attention and support in following an individualized curriculum.

Project-Based Education

Project-based seminars are offered to provide training for proactively applying scientific knowledge and skills to real life issues.

Advanced Training

Advanced classes providing practical training in a wide variety of research methods in psychology are offered to third-year students, enabling them to acquire specialized skills and an integrated understanding of psychological, biological, and social sciences.

<https://psych.doshisha.ac.jp/english>



Faculty of Global Communications

With the strategic knowledge acquired in the Faculty of Global Communications, graduates are expected to become successful negotiators and administrators in organizations involved in international business, education and culture. Choosing from one of the three programs of study: English, Chinese or Japanese, students will learn complex language skills that are critical for international success. Moreover, they will gain an awareness of how to adapt and succeed in the many aspects of our rapidly changing world.

All of the students in the English and Chinese Courses will participate in a one-year Study Abroad program. Through this experience, students will gain an in-depth understanding of foreign cultures and increase their chances to contribute to the global society in a meaningful way.

Our Japanese degree course aims to provide students from abroad with a deep understanding of Japanese language and culture. Moreover, students will be able to navigate not only the academic world for further study but also the business world for a successful career. Through the Seminar on Japanese Society, and through a program of cultural-immersion experiences, communication skills will be honed and cultural understanding will be broadened.

The culmination of the 4-year program in the Faculty of Global Communications is the Seminar Project. Students will take the initiative in proposing, planning, and administering original projects such as an international conference or a major cultural event. Through the management of such a project, students will "learn by doing," which is the best preparation for working in a global environment.

<https://globalcommunications.doshisha.ac.jp/en> ▶▶



Faculty of Global and Regional Studies

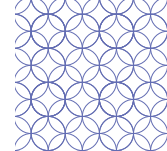
In recent years the media is constantly encouraging us "to think from a global perspective." However, most global problems arise from regional conflicts between cultures, peoples, or economic systems. Consequently, in order to effectively deal with the issues affecting the world today, it is indispensable that we deeply understand the regional issues and cultures behind them.

The Faculty of Global and Regional Studies seeks to give students, who belong to one of the three divisions: Europe, Asia Pacific, or the Americas, a solid grounding in local cultures, histories, and societies from an interdisciplinary perspective by training them in the use of the various languages used in these regions, the analysis of the problems facing each region, and the process of thinking about ways to resolve them. At the same time, it carries out research from a global perspective because while each region has its own distinctive characteristics, they exist in dynamic relation to each other. Through four years of study and research from both a global and regional perspective, students acquire the ability to be active in the international community from various perspectives.

<https://gr.doshisha.ac.jp/en> ▶▶



Graduate Schools



The Graduate School of Theology

The Graduate School of Theology occupies a unique and important place as a center for religious studies in Japan where the number of institutions that offer opportunities to study religions academically is limited. The Graduate School of Theology provides programs of study leading to the degrees of Master of Theology and Doctor of Theology. The M.Th. Program is divided into five major courses of study: Biblical Theology, Historical Theology, Systematic Theology, Practical Theology, and Interdisciplinary Study of Monotheistic Religions.

The Biblical Theology Course aims to understand and interpret the Bible by analyzing the texts in their social and cultural settings. The Historical Theology Course is concerned with the historical development of diverse Christian beliefs, practices, and communities. The Systematic Theology Course deals both with clear understanding of various religious thoughts and with their meaning for and relevance to the problems with which our society is faced. The Practical Theology Course enables students to prepare theoretically and practically for such careers as ministry, education, and social work. The Interdisciplinary Study of Monotheistic Religions Course undertakes interdisciplinary and comprehensive research on Judaism, Christianity, and Islam, and their civilizations in the search for coexistence among diverse religious traditions.

<https://theo.doshisha.ac.jp/en> ▶▶



Graduate School of Social Studies

Globalization and information literacy, regional conflicts and terrorism, labour alienation and unemployment, low birth-rate, the ageing population and the changing family system, changes in education and personality development for the next generation - these changes in society have a fundamental influence on human beings and their way of life. Social Studies, at the graduate level, attempts to comprehensively investigate these social changes and to systematically understand the restructuring of the complex framework of society. The ultimate goal for graduate students is to acquire methodological skills for examining issues from a professional as well as a humanistic perspective in areas such as: relationships between individuals and society; welfare problems; interpersonal relationship in the work environment; cultural and educational issues in personality development; and mass media as a reflection of society. With the five majors of Social Welfare, Media Studies, Education, Sociology and Industrial Relations, the Graduate School of Social Studies serves as the university headquarters for humanistic studies of social sciences. Graduates of the school are expected to be competent in utilising rigorous methodology in order to comprehensively investigate the nature of various social changes in their field of expertise. Our graduates will, therefore, be able to play a leading role in society with their highly specialized knowledge and international perspectives.

<https://ss.doshisha.ac.jp> ▶▶
JAPANESE ONLY



Graduate School of Letters

We in the Graduate School of Letters ask a central question: what does it mean to be human? The question is as old as human history, and as universally debated as it is ancient. And yet we ask that question now with fresh urgency, as global networks of alliance, commerce, and communication bind all people together, across oceans and continents. In the Graduate School of Letters, we bear always in mind, in this new era, the necessity of balancing innovation with tradition, and the local with the global.

The Graduate School of Letters consists of five programs: Philosophy; English Literature and English Linguistics; Cultural History; Japanese Literature; and Aesthetics and Art Theory. In each program, students can earn a Master of Arts degree, a Doctorate, or both. Students pursuing a Master's degree develop a command of their special field of study, while Doctoral candidates mark out for themselves highly advanced, unique programs of research. Our graduate programs prize cooperation with foreign universities and researchers, and cultivate talented scholars—scholars who will, we hope, become leaders in academia and beyond.

<https://letters.doshisha.ac.jp> ▶▶
JAPANESE ONLY



Graduate School of Law

The Graduate School of Law offers master's and doctoral degrees in three areas of specialization: political science, private law, and public law. The political science specialization includes the fields of the history of political thought, contemporary political process, and international relations. The public law specialization deals with legal systems concerning constitutional law, administrative law, tax law, criminal law, international law and legal theory. The private law specialization mainly concerns laws relating to civil life and business practices. We are one of the first Japanese universities to introduce a systematic and practical program on corporate legal affairs.

We offer opportunities for students who have a strong interest in international fields, such as diplomacy, international legal affairs, and international business, by providing various overseas study programs: Dual-Degree Programs and Credits Exchange Programs in Europe, North America, and Asia.

Our alumni are active in various fields, such as the academic community, the legal community, journalism, local and national government, international organizations, and business in Japan and elsewhere.

<https://law.doshisha.ac.jp> ▶▶
JAPANESE ONLY



Graduate School of Economics

The Graduate School of Economics aims to nurture both academic researchers and those who can serve as policymakers and specialized professionals based on the economics skills such as quantitative analysis, mathematical analysis, historical analysis, policy analysis, cultural and environmental management.

Our Master's Program consists of two majors and each major is divided into two courses to make education and research effective.

- | | |
|---|----------------------------|
| ■ Economic Theory | ■ Applied Economics |
| • Theoretical Analysis Course | • Applied Economics Course |
| • Political Economy & Economic History Course | • Creative Economy Course |

In addition, we provide two unique programs: Professional Studies in English (PSE), which aims at improving students' English skills, and Contemporary Studies, which deals with up-to-date topics in economics.

The Doctoral Program comprises the Course for fostering researcher and the Special Course for Adult Students. The former aims to cultivate researchers specializing in economics who can play an active role as faculty members at universities and researchers at research institutes. The latter is designed for those who have accumulated research experience, providing them with guidance in writing their doctoral theses. Overall, the central goals of the Doctoral Program are to provide an opportunity to undertake further research in specialized areas towards obtaining a doctoral degree, and to develop profound knowledge and research capabilities in economics and the related disciplines.

Our faculty provides a wide range of scholarship assistance for graduate students. Additional information can be found at <https://www.econ.doshisha.ac.jp/en/>.

<https://www.econ.doshisha.ac.jp/en> ▶▶



Graduate School of Commerce

With the progress of internationalization and informatization, the economic system is rapidly changing and new business models are being created. The Graduate School of Commerce aims to cultivate specialists who use their advanced expertise to minutely analyze the uncertain, drastically changing industrial society and deal with the challenges that arise therein.

The Master's Program is divided into four courses of Data Science, Marketing, Management and Accounting, and students with different interests stimulate each other to improve their research skills. Alumni are working in various fields as specialists such as an administration executive, a small and medium enterprise management consultant, a certified public accountant, a tax accountant, an investment manager, and staff of international organizations. The Doctoral Program trains its students to acquire the ability to work as an independent researcher, guiding them through a phased process towards obtaining the doctoral degree and sending out numerous competent researchers to universities and research institutions.

<https://com.doshisha.ac.jp> ▶▶
JAPANESE ONLY



Graduate School of Policy and Management

While modern society has greatly benefited from the impressive progress of science and technology, it is also facing grave threats from new problems such as environment degradation. Due to these factors, the policy issues have become multifaceted and complex, requiring innovative approaches to finding appropriate solutions.

The Graduate School of Policy and Management aspires to synthesize multiple disciplines to tackle the emerging policy concerns, and to establish a new interdisciplinary branch of knowledge in the area of policy analysis and implementation. One of the unique characteristics of the Graduate School is that it offers to the students various opportunities for developing human networks. In addition to Doshisha University's full-time faculty, its teaching staff includes local government officials, professionals with reputable business experience, and leaders of nongovernment organizations, who are actively involved in actual policy making.

The Graduate School consists of one department: Department of Policy and Management (DPM). DPM has master's and doctoral programs in policy studies (including public, corporate, and international policies) and social innovation. The department is designed to develop problem-solving capabilities in students, so that they may take leadership roles in various organizations such as central and local governments, policy think-tanks and business enterprises.

<https://sosei.doshisha.ac.jp> ▶▶
JAPANESE ONLY



Graduate School of Culture and Information Science

At Doshisha University, the Graduate School of Culture and Information Science offers up-to-date postgraduate programs. Both the M.A. and Ph.D. programs offered by the Graduate School are closely linked with the curriculum of the Faculty of Culture and Information Science. The Graduate School shares the academic disciplines of the Faculty and aims to foster in our students an in-depth understanding of various cultures, logical and critical thinking, and skills in data science such as statistics-oriented analysis methods and computer science. The Graduate School offers four courses: Cultural Resources Studies, Linguistic Data Science, Behavioral Data Science, and Fundamental Data Science. While our students are expected to concentrate on one of the four courses, they are also encouraged to participate in other three courses according to the academic interests or topics they have in mind for their M.A or Ph.D. theses.

<https://www.cis.doshisha.ac.jp/english/gs> ▶▶



Graduate Schools

Graduate School of Science and Engineering

The Graduate School of Science and Engineering consists of five majors; Information and Computer Science, Electrical and Electronic Engineering, Mechanical Engineering, Applied Chemistry, and Science of Environment and Mathematical Modeling. Each of these majors offers Master's and Doctoral degree programs. Under the guidance of the faculty members with superior research achievement, students are able to engage in the most-advanced research activities utilizing top-level research facilities, such as one of the largest massively parallel evolution simulators in Japan.

The major characteristic is the active exchanges with the society and the promotion of internationalization. Along with the implementation of entrusted researches and collaborative projects sponsored by business enterprises, the Cooperative Graduate School System, which the students are able to receive research guidance by the researchers of private companies and public institutions, has been introduced. The Graduate School has exchange programs with foreign prestigious institutions such as the Group of Ecoles Centrales, France, Universidad Politécnica de Madrid, Spain, Polytechnique Montréal, Canada and the others. Furthermore, our graduate school has a Double Master Degree System with Doshisha Business School for MOT (Management of Technology) education. Students will be awarded two master degrees, MSc / MS.Eng and MBA in the three-year course.

<https://se.doshisha.ac.jp> ▶▶
JAPANESE ONLY



Graduate School of Health and Sports Science

Sports have been widely recognized to have the important role, in order to improve quality of life in the present society. The persons who contribute to improve health and social development in sports and have specialized knowledge and practical theory in the health and sports science are required eagerly. The aim of the Graduate School of Health and Sports Science is to respond to such social demand and to produce researchers, educators and professionals possessing a high-level technical knowledge and theory of the health and sports science area. Furthermore, they will be requested to show good leadership in various and broad fields in the society.

The Graduate School of Health and Sports Science offers M.S. and Ph.D. programs. Following three main academic fields covering from a gene to a human body and the society are available: 1) Health Science 2) Training Science 3) Sports Management. The education and research system learning across various academic fields that related to health and sports science, such as medical, engineering, psychological and others are also available.

<https://sports.doshisha.ac.jp/graduate> ▶▶
JAPANESE ONLY



Graduate School of Life and Medical Sciences

To prepare new engineers and researchers using a multidisciplinary approach, the Graduate School of Life and Medical Sciences offers M.Sc./MSE and Ph.D. programs with two areas of concentration. Major of Biomedical Engineering and Informatics concentration of the Graduate School of Life and Medical Sciences provides a multidisciplinary education to prepare professional engineers who will develop innovative future life technologies. The curriculum focuses on electrical and mechanical engineering as well as information technology, and offers diverse perspectives to foster next-generation engineers.

Major of Medical Life Systems concentration of the Graduate School of Life and Medical Sciences offers diverse graduate curricula that lead to M.Sc. and Ph.D. in Science. This multidisciplinary education prepares students for a career as a professional researcher in fields that require specialized knowledge of basic medical sciences and technology.

<https://biomedical.doshisha.ac.jp/en/overview/concept.html> ▶▶



Graduate School of Psychology

The mission of the Graduate School of Psychology at Doshisha University is to promote integrated learning of advanced knowledge and skills in psychology research and practice. The school offers well-balanced programs both in fundamental and clinical domains, with an emphasis on an empirical understanding of mind and behavior.

The Psychology Course is dedicated to training of researchers in both academic and applied areas. The Clinical Psychology Course seeks to produce mental health professionals based on a scientist-practitioner training model. One of the distinguishing features of the school is that it pursues its courses of education and research in close collaboration. We encourage students to appreciate training in scientific research as a prerequisite for practice in applied settings, and real life issues as manifestation of the laws of the mind.

In both courses we strive to produce skillful, human resources that can contribute to the development of healthy minds, predict and prevent the problems of modern life, and aid in carrying out solutions to complex problems. Students that complete the graduate degree programs can be expected to have a broad range of opportunities for productive careers in diverse fields such as education, the judicial system, public administration, health care, and industry.

<https://psych.doshisha.ac.jp/english> ▶▶



Graduate School of Global Studies

Doshisha University's Graduate School of Global Studies (GSGS) is an independent graduate school launched in April 2010 in response to the pressing urgency of issues such as transnational migration, refugee flows, regional conflict and the environment. Solving such large-scale problems requires a combination of regional and global perspectives, and a willingness to use multiple perspectives from the humanities and social sciences. Consequently the GSGS brings to bear both regional and global expertise ranging across an array of disciplines to address pressing issues in the world today.

Rather than pursuing vague generalizations, GSGS encourages students to pursue focused research projects that investigate how individual case studies help illuminate broader global trends. GSGS particularly promotes studies that cross disciplines and national boundaries and that search for larger connections. As a result, GSGS seeks students with a clear focus, research agenda, and willingness to challenge the limits of any one discipline or approach. Master's and doctoral students belong to one of the following three clusters:

- American Studies Cluster
- Contemporary Asian Studies Cluster
- Global Society Studies Cluster

<https://global-studies.doshisha.ac.jp/en> ▶▶



Graduate School of Brain Science

Our brains underlie the uniqueness of human beings. Understanding how the brain works is therefore one of the most important problems in the science of nature and the mind. The outcomes of brain science research will also provide insight into how we treat/prevent neurological and mental disorders, and ultimately how we educate our children. In this regard, research in brain development and aging is significant not only to academia but also to our entire society. We therefore perceive the urgency of fostering young scientists who can lead and push this research field forward.

Our program faculty consists of internationally renowned scientists in molecular, cellular, systems, and pathological neuroscience. Their research interests include the mechanism of neurotransmission, ion channels/transporters, neural development, neural circuits, cognition, functional brain circuit construction, neurocomputation, neuronal regeneration and neuropathology. The five-year training program revolves around these excellent research programs to foster next-generation scientists.

To achieve this goal, we encourage students to develop their abilities in critical thinking, problem and goal setting, and professional communication in addition to scientific knowledge and research techniques. We believe that acquiring these merits will help them excel and become true leaders not only in brain research but also in any areas of problem - solving.

<https://brainscience.doshisha.ac.jp/en> ▶▶



Law School

Doshisha Law School opened in April 2004 and offers a rigorous program featuring lectures, small group seminars and active participation by students in classroom discussions. The teaching staff includes renowned scholars and experienced legal practitioners.

For the 2023 academic year, 73 students have been granted admittance to the law school. Of these, 56 students who demonstrated an adequate foundational knowledge of law entered a two year program, with another 17 being admitted to a three year program that assumes no knowledge of law at all and makes the legal profession accessible to people from different backgrounds.

Foreign applicants are welcome to apply, and the law school has a special admissions track for foreign students. To complete the Law School program, the students need to be able to speak, read and write Japanese at a graduate-school level.

<http://law-school.doshisha.ac.jp/en> ▶▶



Graduate School of Business

Doshisha Business School (DBS) opened in 2004 following a long tradition of successful Kyoto based global corporations including Omron, Kyocera, Nintendo, and Shimadzu. Our English-language Global MBA was inaugurated alongside the school's Japanese MBA in 2009, and following five successful years was strengthened as an independent Global MBA (formally renamed Global Business and Management Studies) program in 2014 with a bolstered dedicated faculty and expanded course offerings. Global by nature, we welcome applications from aspiring and inspiring individuals regardless of gender, ethnicity, nationality, or religion, and to date have welcomed over 400 students from 85 countries.

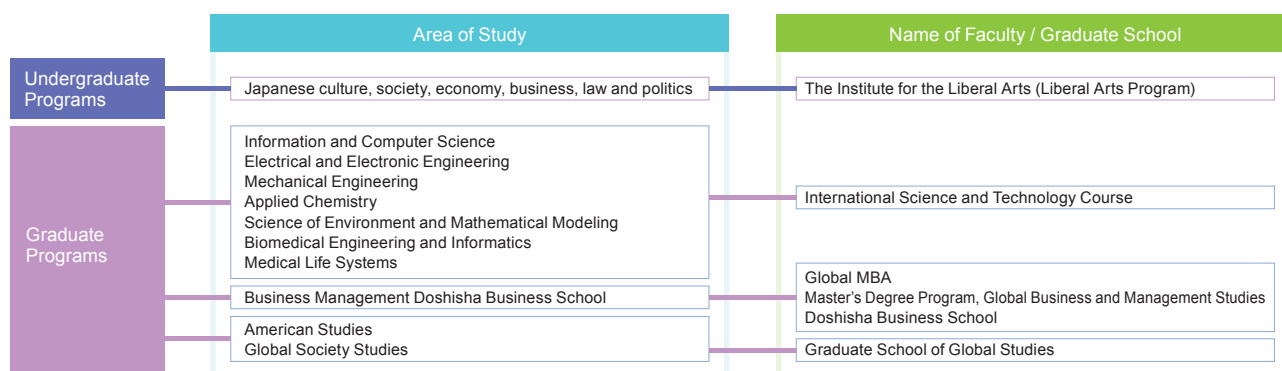
At DBS, we apply the principles of "education guided by conscience" and internationalism to the challenges and opportunities of today's world to provide a business education that will prepare students to manage successfully and make a difference in the business environment of the 21st century.

DBS encourages students to capitalize on being in Kyoto with its historic network of innovative and creative industries and global corporations by presenting students with opportunities to work in partnership with professors and local and multinational business leaders. Our combination of theory and practice makes DBS the ideal environment to explore and expand the horizons of sustainable development and cross-cultural management. DBS invites you to experience the future of global business management in Kyoto.

<https://gmba.doshisha.ac.jp/en/> ▶▶



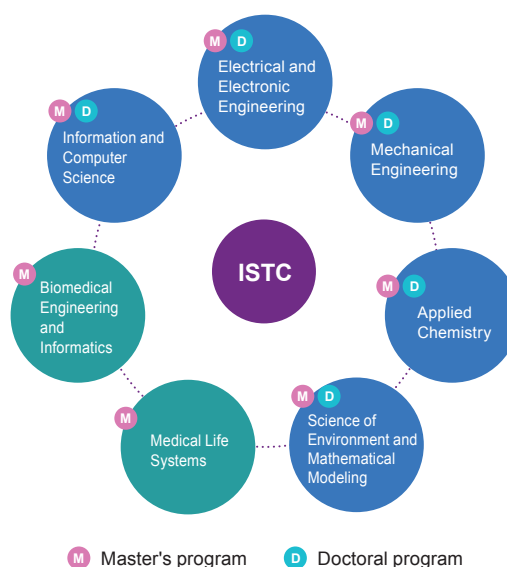
Degree Courses and Programs Offered



International Science and Technology Course (ISTC)

ISTC is established by the Graduate School of Science and Engineering, and the Graduate School of Life and Medical Sciences, aiming to nurture students who can achieve a leadership role in the global world with the Japanese technology management skills and language proficiency.

All classes necessary to obtain a degree are taught in English as well as elective classes for learning Japanese language and culture. Students who are fluent in Japanese are also eligible to take additional courses taught in Japanese for the further development of their technological knowledge and techniques. Furthermore students can take an internship program to work at Japanese industries in Osaka, Nara, Kyoto and Kansai Science City where Kyotanabe campus is located.



<https://istc.doshisha.ac.jp/en/>



The Institute for the Liberal Arts (ILA)

ILA offers a four-year degree program exclusively in English. Students begin by studying broadly across the humanities and social sciences. They can then specialize or combine courses while mastering methodologies and research skills for comparative analysis, gaining an in-depth knowledge of Kyoto, the Kansai region, Japan, and the wider world.

The concentrations offered are as follows: Japanese Society and Global Culture (which combines History and Anthropology); Japanese Business and the Global Economy (Business and Economics); or Japanese Politics and Global Studies (Politics and International Relations). While studying their chosen subjects, students have the opportunity to study the Japanese language at any level from beginner to advanced.

The curriculum encourages critical thinking, analysis, intensive reading, and discussion. The Institute faculty members challenge students to formulate and ask intriguing questions in an interdisciplinary mode of inquiry.

Students have flexibility in choosing from a wide range of classes offered in English at the ILA as well as in Japanese and English throughout the University.

Students also have the opportunity to spend a year abroad at one of Doshisha's many partner universities via a competitive application procedure or to intern in Kansai-based companies, NGOs, or with local politicians.

In the contemporary global world, regional knowledge, international experience, language proficiency, and work experience will help ILA graduates stand out from the crowd.

<https://ila.doshisha.ac.jp/>





◆ Global Resource Management (GRM)

-GRM program is a graduate education program for all graduate students in the master's and doctoral degree programs.

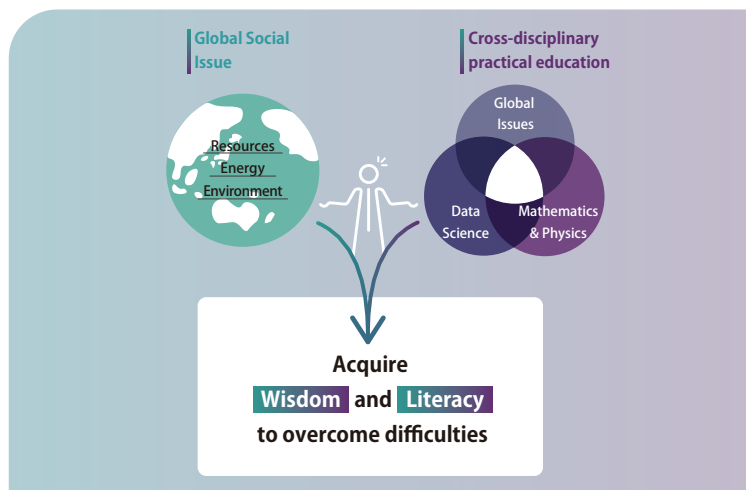
The GRM program nurtures "Con Engineers and Innovators" who not only have the skills to apply science and make it useful in human life, but also have "Wisdom" that combines science and technology, as well as "Conscience" to support people.

Features of Global Resource Management Program

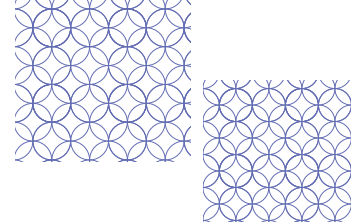
1. Acquire "Wisdom" and "Literacy" to overcome difficulties
2. Learn on the field and learn from the field
3. Study in English with students of different backgrounds
4. Leads to post-graduate career development



<https://grm.doshisha.ac.jp/en/> ▶▶



Inbound Programs



Center for Global Education

Launched in April 2016, the Center for Global Education (CGE) offers liberal arts courses taught solely in English. The CGE's curriculum is designed to provide in-depth learning opportunities in a wide range of academic fields in the humanities, social sciences and natural sciences.

The CGE accepts international exchange students from the approximately 213 affiliated universities who wish to study Japan's culture, history, society, and nature. The CGE also accepts regularly enrolled domestic students interested in gaining a more international perspective to prepare for their studies abroad or careers after graduation. Therefore, in the courses that are offered by the CGE, international exchange students and domestic students study together, learning interactively through group work and discussions, benefiting from the diversity of perspectives that are presented and shared in the classroom.

The small class sizes of the courses that are offered by the CGE for Global Education are meant to provide space for thoughtful interaction and communication among the students, and in this setting, the students

will be able to cultivate independent thought based on a thorough understanding of the opinions of others. Academic collaboration between international exchange students and domestic students will enhance this experience, encouraging students to think constructively and critically together about shared topics of concern from a global perspective.

In keeping with our University's founding mission of promoting internationalism and cultivating a student body that is aware of its social responsibilities to the world beyond the nation's borders, the CGE aims to foster these essential values among our students such that they are nurtured and remain central to the University's core purpose.

https://www.doshisha.ac.jp/en/international/from_abroad/cge/cge.html ▶▶



Center for Japanese Language and Culture

Center for Japanese Language and Culture (CJLC), Doshisha University, was established to provide all international students with effective Japanese language education and Japanese studies.

The CJLC also handles affairs regarding education and learning, and life support, for international students from Doshisha-partner institutions, Associated Kyoto Program (AKP), Tübingen University Center for Japanese Studies (TCJS), Stanford Japan Center (SJC), and Kyoto Consortium for Japanese Studies(KCJS).

The CJLC offers "Japanese Language and Culture Courses" consisting

of "Japanese Language Courses", "Lecture Courses in Japanese Studies" and "Lecture Courses in International Studies" to international students and domestic students at undergraduate / graduate programs.

<http://cjl.doshisha.ac.jp/en/index.html> ▶▶



Scholarships

Most of our international students receive some sort of scholarships - some from Doshisha, some from other organizations like JASSO (Japan Student Services Organization) and MEXT (Ministry of Education, Culture, Sports, Science and Technology). Below is a figure of "Doshisha University Merit Scholarships for Self-funded International Students".



Doshisha University Merit Scholarships for Self-funded International Students

Graduate Students

Ratio of Recipients in Each Category:

- Category S → approx. 20 to 30% of international students
- Category A → approx. 30 to 40% of international students
- Category B → approx. 40% of international students

*The number of recipients varies according to each graduate school.

*The reduction rate is determined by considering such factors as entrance examination results and research plans.

※ Duration of scholarship for graduate students and undergraduate students is two years after admission (renewable for up to the standard number of years required for graduation in students who meet certain standards of academic performance). In being renewed, the reduction rate may be changed depending on academic performance.

※ The Admission Fee, the Facilities Fee, and the Academic Association Fee are not included.

Undergraduate Students

Ratio of Recipients in Each Category:

- Category S → approx. 10% of international students
- Category A → approx. 20% of international students
- Category C → approx. 30 to 60% of international students

*Please check the University website for the amount of scholarship by faculty.

*A full tuition will be charged to approximately 10 to 40% of international students.

*The number of recipients varies according to each faculty or course.

*The reduction rate is determined by entrance examination results.

<https://ois.doshisha.ac.jp/en/scholarships/merit.html> ▶▶



International Cultural Exchange Event

SIED (Student Staff for Intercultural Events at Doshisha) is a student organization that hosts various types of intercultural events under the Office of International Students. On Imadegawa and Kyotanabe campus, there are about 35 staff members who create opportunities that local and international students learn about cultures of one another, deepen their understanding toward different perspectives, and harvest a lasting friendship. Their past events include Kyoto city tours, Japanese cultural

workshops, and cultural and historical presentations by international students. If you are interested in getting firsthand experience on Japanese culture or in sharing your own culture, come and join SIED events!

https://ois.doshisha.ac.jp/en/international_exchange/sied.html ▶▶



Student Support



► Health Center

Health Centers are located on both the Imadegawa and Kyotanabe campuses to help maintain the physical and mental health and to provide students with support.

We offer such services as annual health examinations, health maintenance in the form of reexaminations and illness management, health consultations, psychiatric consultation, and internal medical consultation.



<https://health.doshisha.ac.jp> ►
JAPANESE ONLY



► Counseling Center

Counselors work with students to maximize their ability to understand and resolve problems, including concerns about interpersonal relationships on campus, personality and psychological and mental health issues, as well as decision-making over one's future.



<https://www.doshisha.ac.jp/en/students/healthcare/counseling.html> ►



► Support for Students with Disabilities

Accessibility Support Office for Students with Disabilities (hereinafter SDA Office) serves to help students with physical, mental or developmental disability through individual consultations on what reasonable accommodation can be provided for the student to be able to take courses under the same conditions as other students regardless of the type of disability. For details, see the English version of the pamphlet introducing the SDA Office.

Feel free to also visit the SDA Office website for more specific examples (including videos) of types and details of possible support (information available in Japanese only).

https://www.doshisha.ac.jp/en/student_life/s_support/challenged.html ►



► IT Support Office

Doshisha University's Academic Information Network System provides a secured high-speed, high-capacity connection, gigabit Ethernet, and linking facilities throughout its campuses. Available services include Wi-Fi, eduroam (world-wide roaming access service) connections, VPN connections, SSO (Single Sign-On service), Microsoft 365 (e-mail service, cloud storage, etc.), a remote Desktop service (connect to an on-campus Windows computer) and so on.

In terms of the Internet connection, Doshisha University is available to connect "SINET6". It is one of the world's fastest networks for research and education. Doshisha University maintains about 2,100 high-performance computers for student use in computer classrooms

and open computer labs, and about 300 laptop computers called "DoKoDeMo PC". All computers are connected to a high-speed, high-capacity gigabit network to streamline the use of all manner of educational and research data. In addition, cutting-edge facilities such as the Multimedia Lounges offer a wide array of tools, including 3D printers, for students to try their hand at everything from studio recording and video editing to designing websites filled with visual effects.

Doshisha University has an EES (Enrollment for Education Solutions) agreement with Microsoft, which provides all regular students with access to popular Microsoft software products such as Office, etc. These software products can be installed on every eligible student's own computer without charge.

Doshisha University not only provides cutting-edge Cloud Services, ICT systems and facilities, but also tries to improve educational support through various ICT tools and services.

<https://it.doshisha.ac.jp> ►
JAPANESE ONLY



► Library

There is one main library in each campus, Imadegawa Library and Learned Memorial Library (Kyotanabe), and other various faculty libraries and centers are also available to students.

Both main libraries have plenty of materials, including multimedia resources such as DVDs and audiodiscs. Students can also access a wide range of resources from the Doshisha University Library website, which guides them to the online library catalog "DOORS" (Doshisha Online Retrieval System), Academic Repository, e-books, e-journals and databases.

Library staffs are on hand at the reference counter to answer questions or offer advice on how to search for relevant literature and materials. Variety of training sessions and workshops to help students promote effective library research skills, including search strategies to find information from a variety of resources. Through a broad spectrum of services aimed at supporting studies, the libraries strive to provide an environment where each and every student can constructively focus on studying.

<https://library.doshisha.ac.jp/en/index.html> ►



► The Learning Commons

The Learning Commons is a place for active learning where students can discover knowledge and inspiration through a variety of new encounters with people, technology, information, and other things. Full of open, flexible spaces that can be adapted to fit a wide variety of needs, the Learning Commons is designed to encourage new encounters and collaboration. Here students can find knowledgeable staff who can help them transform their ideas into reality. At Imadegawa Campus, the Commons is located in Ryoshinkan, a building where many undergraduate classes are held. Students can easily drop by between classes to get advice from dedicated staff members, do group work with others, and more. At Kyotanabe Campus, it is located conveniently in the Campus's main library, Learned Memorial Library. Students have easy access to the library resources while they work on their research and class projects in the active learning area.

<https://ryoshinkan-lc.doshisha.ac.jp/en> ►



Foreign Institutions at Doshisha

Several overseas centers of our foreign partner institutions are housed on our campus.

The Associated Kyoto Program (AKP), a study abroad program founded at Doshisha in 1972, is sponsored by a consortium of thirteen American liberal arts colleges such as Amherst College, Pomona College, and Smith College.

The Tübingen University Center for Japanese Studies (TCJS) at Doshisha University was established on the Imadegawa campus in October 1993 as the first German university-affiliated institute in Japan.

The Stanford Program in Kyoto, established in Kyoto by Stanford University in 1989, was relocated to Doshisha in 2006.

The Kyoto Consortium for Japanese Studies (KCJS), a consortium of thirteen American universities, such as Harvard University, Princeton University, Yale University, and Columbia University, was established in 1989.

Associated Kyoto Program (AKP)

<https://www.associatedkyotoprogram.org/>



Tübingen University Center for Japanese Studies

<http://www.kyoto.uni-tuebingen.de>



Stanford Program in Kyoto

<https://undergrad.stanford.edu/programs/bosp/explore/kyoto>



KCJS (Kyoto Consortium for Japanese Studies)

<http://www.kcjs.jp/>



Outbound Programs

► Summer and Spring Program (1 month)

Intensive overseas language programs during summer in England, U.S., Canada, Ireland, the Philippines, Australia, Germany, France, China, Mexico, Russia and Korea, and during spring in England, U.S., Canada, New Zealand, the Philippines, Australia, Germany, France, China, Spain and Korea, are available as part of the regular undergraduate programs elective.

With study in the respective countries taking place during the summer or spring vacation, each of them includes preparatory classes at Doshisha in the semester preceding each program. Summer and Spring Programs are designed to develop the students' language skills to an advanced level in conjunction with other foreign language subjects, as well as to deepen the students' understanding of the culture and society of the country they visit through everyday-life experiences, staying either on homestay or in a dormitory.

► Semester Program (4 months)

Semester Programs are intensive English language program held in Fall semester at overseas institutions. Spending approximately four months at University of Winnipeg in Canada, Deakin University in Australia or University of Hawai'i at Manoa in the U.S., participating students will improve their English skills as well as having a better understanding of the culture and society of the respective countries. In addition to the language courses, homestay experience or dormitory experience gives the students an opportunity to feel the cultural difference first hand, which will further increase their interest in foreign cultures.

► EU Campus Program (5 months)

Doshisha EU Campus at Tübingen University (UT) in Germany serves as a hub for our activities in the area of education and research not only in Germany but all of Europe. Currently there is one program for each semester.

"Doshisha EU Campus German Language and Intercultural Studies Program" is held in Spring semester and it consists of an intensive German language courses, joint seminar of intercultural studies and EU Campus Special lectures.

The other one "Doshisha EU Campus European Studies Program" is held in Fall semester and it consists of subjects provided by Tübingen International and European Studies at UT and by faculties of Doshisha.

Spending approximately five months at EU Campus, participating students will improve their language skills as well as achieving better understanding of European developed approaches and facing issues by studying together with students of UT.

► Student Exchange Program (6-12 months)

Through this program, Doshisha students are able to choose their destination of study abroad from 176 partner institutions in 37 countries and regions all over the world for either one academic year or one semester. Every year, many highly motivated students participate in this program and gain invaluable experience and a broader international perspective.

Many students participate in exchange programs each year, and in response, we have expanded the number of partner institutions and exchange slots.



Organization for Research Initiatives

Organization for Research Initiatives and Development is created in order to establish the university as a base for advanced interdisciplinary research, and to provide broad support for research activities.

The organization which is comprised of numerous groups and shared facilities for advanced research, returns the benefits of research activities to the educational field, and contributes to society as a whole.

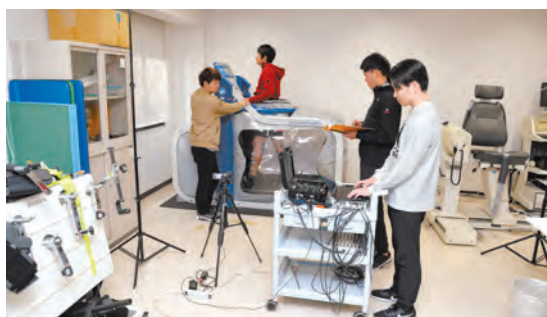
<https://research.doshisha.ac.jp> ▶



▶ Base for Advanced Education and Research

It is organized by Institute for cutting edge education and research and core research center.

- Research Center for Energy Conversion System
- Doshisha Research Project for Active Life in Space Engineering and
- Medical Biology [Doshisha Space-DREAM Project]
- Doshisha-Daikin Next Environment Research Center



▶ Research Centers

The goal of these Research Centers is to open up new directions in modern applied research, and at the same time to foster young researchers through ties to research and education at the University's Graduate Schools.

Many of the full-time faculty members from Doshisha University are active as researchers at the various Research Centers, which also welcome eminent researchers from Japan and around the world as guest fellows. In this way, the Research Centers are able to strive for the world's highest standards.

- Center for Interdisciplinary Study of Monotheistic Religions [CISMOR]
- Institute for Technology, Enterprise and Competitiveness [ITEC]
- Life Risk Research Center
- Higher Education and Student Research Center
- Center for Korean Studies
- Mobility Research Center
- Research and Development Center for Advanced Composite Materials
- Research Center for Nano-Bioscience
- Center for the Study of the Creative Economy
- The Amami-Okinawa-Ryukyu Research Center
- Medical Ultrasound Research Center
- Research Center for Highly-functional Nanoparticles
- Research Center for Kyoto and Tea Culture
- Advanced Biomaterial Research Center
- Center for the Study of Conscience
- Center for Wing of Empirically Supported Treatments (WEST)
- Feminist Gender Sexuality Studies Center (FGSS)
- Center for Study of South China Sea
- Advanced Powertrain Research Center
- Research Center for International Transactions and Law [RECITAL]
- Research Center for Well-being
- Research Center for Space and Medical Sciences
- Bio-Microfluidic Science Research Center
- Research Center for Science, Technology and Social Communication in Next Generation
- International Infrastructure System Research Center
- Research Center for Knowledge Science in Cultural Heritage
- Applied Ultrasonics Research Center
- Research Centre for Small Business Management
- Sports Medicine & Science Research Center
- Sports Injury Prevention Research Center
- Latin America Studies Center
- Center for Research in Neurodegenerative Diseases
- Artificial Intelligence Engineering Research Center
- Research Center for Linguistic Ecology
- Work Environment and Science/Technology Research Center
- Research Institute of Sport Management
- Research Institute for STEM Human Resources
- Self-organization Science Research Center
- Research Center for Human Dignity
- Center for Behavioral Neuroscience
- Research Institute for Mechanobiology
- Research Center for Comparative Consumer Law and Policy in the Digital Society
- Center for the Development of Educational Materials on Classical Japanese Literature
- Research Center for the Protection of Cultural Properties
- Inclusive-BOSAI Research Center
- Center for the Study of the Court Culture
- Research Center for Law and Social Policies
- The Social Marketing Research Centre
- Center of Youth Studies
- AI×Humanity Research Center
- Research Center for Regional Conflicts
- Research Center for Multiculturalism and Intersectionality in Complex Cities
- Journalism, Media & Archives Research Center
- Value Research Center
- Acoustic Navigation Research Center
- Diversity Research Center
- Research Center for Cell Protection and Regeneration Systems
- Center for Transimperial History
- Social Survey Research Center
- Research Center for Drug Development Against Fire Gas Poisoning
- Research Center for Biopathology and Regenerative Medicine
- Sports Sensing Research Center
- Research Center for Science Communication



► Endowed Education Research Project

Endowed Education Research Project, which operate based on grants from individuals, corporations, companies, and other external organizations, are established with the goal of contributing to the vitality and diversity of research and education activities at Doshisha University. Unique courses and open classes are also offered as part of these projects in the form of "Endowed Courses."

- Anti-aging Medical Research Center
- Glycative Stress Research Center
- MBA Educational Function Enhancement Project through Industry-Academia Collaboration



► Division of Research Initiatives

The Division of Research Initiatives is to attain the intensification of the research capacity at Doshisha University. In order to put it into practice, it is essential to keep the accurate picture of the surrounding environment of the research activities. The division does the factual investigation, analysis, and evaluation on the trend of research activities. Also it reviews and gives proposal on the research strategy while regulating the nurture of researchers who would bear the future.

► University Industry Liaison Office

The Liaison Office acts as a bridge linking Doshisha University, industry the national government, local governments, and the local community. The aim of the office is to make available the rich intellectual and research resources of the faculty and staff to the public, and thereby collaborate with civic society in a wide range of areas. The office also aims to serve as a base for creating new industries and businesses while further implementing interdisciplinary joint projects between industry, government and academia.

► Intellectual Property Center

The Intellectual Property Center supports the creation of intellectual property at the university, such as the results of educational and research activities. The center aims not only to protect and increase such intellectual properties, but also to contribute to society by making them available to society for public use and benefit.

► Center for Baby Science

Baby Science is the study which integrates various academic fields including the development science, developmental neuroscience and information science. Center for Baby Science aims to conduct the basic research for clarifying the mechanism and process of development of cognitive behavior and sociability based on Baby Science and to return the results of research to people who are involved in baby care, child care and education.

Center for Baby Science, which has been approved as a "Joint Usage/Research Center" by MEXT (2016-present), promotes joint usage and joint research with researchers at various universities and research institutions.



Research Institutes and Centers



► Center for Christian Culture

In order to realize the founding philosophy of education at Doshisha University, the Center for Christian Culture, on both Imadegawa and Kyotanabe campuses, offers a variety of programs for students and staff, as well as for interested people from outside the university. The programs include the following:

- Chapel Hour
Three days a week at both campuses
- Doshisha Spirit Week
One week per semester
- Advent Service (Kyotanabe)
Second Friday in December
- Christmas Eve Service
Around Christmas Eve at both campuses

► Harris Science Research Institute

The study of science and engineering at Doshisha has a long tradition with origins traceable back to the “Harris Science School”. Joseph Hardy Neesima, who studied natural science at Amherst College, founded the school in 1890, believing that the promotion of science and engineering was necessary for Japan’s modernization. Building on this tradition, Science and Engineering Research Institute was established in 1959 to promote studies of basic science and engineering and its application, including mathematics, physics, astronomy, medical science, earth science, history of science and creative engineering. The main areas of research recently have been in the fields of environmental, biomedical, mathematical, and the related studies. Also, the name of the Research Institute has been changed to that of Harris Science Research Institute in 2015. The research findings are published in the Institute’s own bulletin which is widely distributed in Japan and abroad.

► Institute for Study of Humanities and Social Sciences

The Institute was established as the Doshisha University Research Institute in 1944, and in 1957 renamed as the Institute for Study of Humanities and Social Sciences for the purpose of promoting theoretical, historical and applied studies in the fields of humanities and social sciences, contributing to academic research in Japan.

The Institute’s main functions are the following;

1. Developing interdisciplinary research programs
2. Publishing ongoing research projects in periodicals and books
3. Arranging open lectures and symposiums
4. Collecting and arranging various research materials related to humanities and social sciences, and making them available to the faculty, students, and the general public.



► International Institute of American Studies (IIAS)

IIAS at Doshisha University was established in 1958, growing out of the Kyoto American Studies Summer Seminar, a joint program with the American Center at Kyoto University. Since then, IIAS has been conducting research in a wide range of academic disciplines regarding the United States of America, and providing a variety of resources to the public. IIAS is one of the finest research institutes focusing on American Studies in Japan, dedicated to creating and sharing transformative ideas across the humanities and social sciences. IIAS also hosts public lectures in the spring and fall of every year, and sponsors lectures and symposia, inviting distinguished guests, both Japanese and non-Japanese.

► Doshisha University Historical Museum

The Museum was established in 1996. We have over 1,100,000 cultural resources as archaeological artifacts, historical documents and traditional folk goods. Our first task is museum curation. We have academic exhibitions at our exhibition rooms of both Kyotanabe and Imadegawa campus and have over 40,000 visitors as a total every year. Second task is the archaeological and historical academic survey. Most of the exhibits and stored cultural resource have been from our academic excavations by archaeological department and rescue survey of archaeological sites at our campus. The main theme of our survey is the history of Kyoto and Japanese tradition. And as third task, we serve several student workshops for curatorial education course and other lectures of archaeology and Japanese history. Through such various activities of exhibition, academic survey and education, we contribute to our university.

► Doshisha Archives Center

The Center was established in 2004 as the successor of the previous Archive, which was founded in 1963. The purpose of the Center is to collect, organize, preserve, and utilize historical materials related to the founder Joseph Hardy Neesima and Doshisha schools. Thereby, the Center succeeds those materials on the history and traditions since the founding to the following generations and contributes to the activities and improvement of Doshisha’s education. According to this purpose, we publish research journals, hold workshops, make exhibitions at Harris Science Hall Doshisha Gallery (permanent and special exhibitions), and conduct public lectures. By this, the Center aims to raise awareness about Doshisha’s history and the spiritual legacy.

► European Info (EU i)

European Information Center (EU i) in the Imadegawa Library has been specified by the European Commission as information centers specialized in bibliography related to European integration. European Information Centers (EU is) are located at 500 universities worldwide. Many of them are in member states of the EU, however, in addition to the National Diet Library, which is the EU’s Depository Library, 18 EU is are situated at universities in Japan. Doshisha University European Information Center has provided information about EU as the third EU i in Japan since 1976. At Doshisha University, the EU i undertakes activities such as showing European movies at its annual EU-Japan Friendship Week, for understanding of each other’s society and culture.

Directory of Academic Staff

School of Theology

Department of Theology

Ada Taggar-COHEN

Jewish Studies · The Hebrew Bible and Ancient Near Eastern Studies

ECHIGOYA Akira

Old Testament Studies, Biblical Archaeology

KATSUMATA Etsuko

Rabbinic Literature, Jewish History, Jewish Thought

KITANI Kanan

Contextual theology, Environmental theology, Ecumenism

KOHARA Katsuhiko

Christian Thought, Religious Ethics, Comparative Study of Monotheistic Religions

MIYAKE Takehito

Sociology of Religion, Philosophy of Religion

MIWA Chishio

History of Christianity in Japan, History of Kirishitan

MORIYAMA Teruaki

Islamic History, Formation and Development of the Muslim Society

MURAKAMI Mika

History of Modern Christianity, Reformation

MURAYAMA Moriyoshi

New Testament Study and Early Christianity

NAKANO Yasuharu

17th-18th Century British and North American Theology, Quaker Studies

SEKIYA Naoto

Practical Theology

Faculty of Letters

Department of English

AKAMATSU Nobuhiko

Applied Linguistics, Psycholinguistics, TESOL

David John CHANDLER

British Literature and Culture 1780-1850

ENGETSU Katsuhiko

Modern Poetry in English, Christian Literature

ENJO Yuri

Early Modern English Literature and Education

ISHIZUKA Noriko

19th and 20th Century American Literature

KANATSU Kazumi

British Romanticism

KANAYA Masumichi

19th- and 20th-century British novels

KATSUYAMA Takayuki

British and American Theater and Film Studies

KAWASHIMA Takeshi

Nation and Gender and 20th Century British / American Theatre

KIDA Shusaku

Applied Linguistics

KIKUTA Chiharu

Syntax and Semantics of English and Japanese, Cognitive Linguistics

KIRIYAMA Keiko

Nineteenth-Century British Literature and Culture

Mark RICHARDSON

American Literature, Poetry

MCGUIRE, Michael Paul

Date-driven learning, Formulaic language and spoken fluency, Corpus tools

NOTOHARA Yoshiyuki

Applied Linguistics, Corpus Linguistics

ONUMA Yu

Reception of Classical Literature in the Middle Ages

SAITO Sayo

American literature—19th and 20th century

SHIMOKUSU Masaya

Irish literature, fantastic literature

SHIRAKAWA Keiko

Race and Ethnicity in American Literature and Culture

Stefanie Alexa STADLER

Intercultural Communication, Pragmatics, Discourse Analysis

SUGAHARA Mariko

Phonology and Phonetics of English and Japanese

SUGIURA Hideyuki

Conversation Analysis, Language and Gesture

TAKITA Kensuke

Generative Grammar/Comparative Syntax

TANAKA Takao

Applied Linguistics, L2 Motivation

USUI Masami

Diversity in English-written Literature

YAMABE Shota

Twentieth-Century American Literature and Culture

Department of Philosophy

ATARASHI Shigeyuki

Various Aspects of Empiricism

HATTORI Yukihiko

19th and 20th Century French Philosophy

HAYASHI Katsuki

Kantian Philosophy, and the Problem of Metaphysics

ISHIDA Ryuta

European Medieval Philosophy and Thought

KITO Yoko

Contemporary Anglo-American Philosophy, Ethics and Theology

NAKAGAWA Akitoshi

Classical German Philosophy

NAKAMURA Takuya

German Philosophy (Phenomenology)

OGAWA Takeru

The epistemology in logical positivism and philosophy of care

Department of Aesthetics and Art Theory

DATE Tatsuaki

Interaction between Poetry and the Plastic Arts

ECHIZEN Toshiya

Art and its Acceptance since 20th Century

KIYOSE Misao

Analysis of the Form of the Meaning in the Western Art from Renaissance to 19th Century

KONO Michifusa

The Study of Depth Depiction in the Chinese Landscape Painting

MAEDA Tomomi

Art and Culture in Vienna at the end of the 19th Century

MORITA Dan

German Aesthetics in the Early 20th Century

OAI Takaharu

Western Music in the Renaissance and Baroque Era

SATOW Morihiko

Visual Culture and Media in Modern/Contemporary Japan

Department of Cultural History

ABE Toshihiro

European Medieval History, Cultural Studies in the Mediterranean

DOI Ayumu

Cross-Cultural History in Modern China

HATTORI Osamu

Modern German History, Social History of Medicine

HORII Yutaka

Medieval and Early Modern Islamic History, History of the Relations between the Middle East and Europe

INOUE Kazutoshi

The Buddhist Art of Japan

JOHCHI Takashi

The History of Chinese Political Culture in Ming and Qing Dynasties

KISHIMOTO Kota

Ancient Greek History

KITA Yasuhiro

Ancient History and Cultural History in Japan

KOBAYASHI Takehiro

Japanese Modern Social History, History by region, Public History

MIZUNOE Kazutomo

The Japanese Archaeology and The Protection of Buried Cultural Property

NISHIOKA Naoki

Daily Life and Popular Culture in Early Modern Japan

ONO Naoko

American Social History

SANO Shizuyo

Historical Geography on Japanese Wetlands

YAMADA Toru

Political, Social and Cultural History of Medieval Japan



Directory of Academic Staff

Department of Japanese Literature

FUJII Toshihiro

Historical Research of Japanese

IWATSUBO Takeshi

The Tale of Genji

KAKIMI Shuji

Study of Japanese Ancient Literature such as Manyoshu and Kojiki

KATO Hiroki

The Study of Japanese Modern Literature, Literary Theory and Criticism

MINAMOTO Kenichiro

Study of medieval military tale centered on The Tale of Heike

MIYAKE Hiroyuki

Study of Romance Fictions in the Edo Period

NISHIKAWA Atsuko

The study of Japanese Modern Literature, Fantasy Literature, Textual Analysis

OYAMA Kazuya

Study on Waka Poem in Edo Period

SASAO Kayo

Japanese Modern Literature, Cultural Studies

SEZAKI Keiji

Japanese Modern Literature, Cultural Studies

UEKI Tomoko

The Study of Japanese Ballads and Songs in the Middle Ages

YAMAMOTO Sawako

The Study of Historical Change in Medieval Japanese ;Grammar and Word Formation

YANAGAWA Hibiki

The Study of Japanese Sinitic Literature in Heian and Kamakura Periods

Faculty of Social Studies

Department of Sociology

FUJIMOTO Masayo

Sociology of Work

ITAGAKI Ryuta

Cultural Anthropology, Social History of Modern Korea

KOBAYASHI Hisataka

Study of Social Attitudes

KUTSUWADA Ryuzo

Sociological Study of Localities and Globalization

MORI Chikako

Transnational Sociology, Urban Sociology

OJIMA Fumiaki

Sociology of Education, Social Stratification

TATSUKI Shigeo

Sociological Study of Disasters

UKAI Kozo

Sociological Theories, Social Networks, Historical Sociology

Mattias VAN OMMEN

Cultural Anthropology, Digital Culture and Society

Department of Social Welfare

GUO Fang

Elderly Welfare, Service Assessment

HIRONO Shunsuke

Historic study of people with disability

KANG Minho

Child and Family Welfare / Social Work Practice

KIHARA Katsunobu

History and Philosophy of Social Welfare; Social Work in Mental Health

KOYAMA Takashi

Social Work

KUGA Hiroto

Social Work Practice

Martha MENSENDIEK

Multi-cultural Social Work / International Social Work

NAGATA Yu

Community Practice, Community Care

NOMURA Yumi

Case Study Method in Socialwork Education

ONOSHRESTHA Maya

Child and Family Welfare, Welfare Planning Evaluation

SUZUKI Ryo

Social welfare for people with disabilities, disability studies

Department of Media, Journalism and Communications

ABE Yasuhito

Communication, Civic Media, Science & Technology

IKEDA Kenichi

Social Psychology of Communication

ITO Takashi

Journalism Study and Sociology

KATSUNO Hirofumi

Cultural Anthropology (Digital Media, AI, Robot)

KAWASAKI Yoshinori

Media History

MIZUIDE Koki

Media Study of Disaster

OGURO Jun

Journalism, TV Documentary

SAEKI Junko

Interdisciplinary Research on Media and Gender

TAKEUCHI Yukie

The History of the Advertisement, Media, Modern Design and Modern Society

Department of Industrial Relations

AGATA Kenji

Sociology of Occupation

HIGUCHI Junpei

Comparative Human Resource Management and Employment Relations

MATSUYAMA Kazuki

Organizational behavior and human resource management

MITSUYAMA Masako

The Study of Atypical Workers in Japan

MIYOSHI Tsutomu

Industrial relations in workplace and roles of enterprise union

TERAI Motohiro

Long working hours, non-regular employment, D & I laws and policies

TOMITA Yasunobu

Work Life Balance and Diversity Management

UEDA Masashi

The Study of Human Resources Management in Japanese Multinational Corporations

URASAKA Junko

Labor Economics, Education Economics

Department of Education and Culture

CHOI Safa

International History, Migration

KOJIMA Akira

Migration and Education

KOSHIMIZU Yuji

History of Education and Culture in Europe

NAKAGAWA Yoshiharu

Holistic Education & Asian Philosophies of Education

OKUI Haruka

Transmission and Creation of the Body Technique

William Robert STEVENSON III

Globalization and Education

YAMADA Reiko

Comparative Higher Education, Gender & Education

YOSHIDA Ryo

Transcultural History of Japan and the U.S.

Faculty of Law

Department of Law

ARAI Kyo

Law of Armed Conflicts

ASADA Masahiko

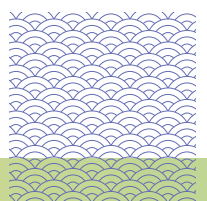
International Law

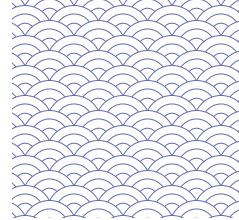
FUNATSU Koji

Business Corporation Law

GOTO Rinko

Treaty Interpretation



**HAMA Shinichiro**

Philosophy of Law

HAYASHI Takami

Private International Law

HIGAKI Shinji

Contemporary Issues on Freedom of Speech

HIGA Yoshihide

Western Legal History & Indian Law

HIROTA Hiroshi

Studies on legal practices of global companies in Japan

IKEDA Naoto

Omissions in Criminal Law

ISEKI Ryoko

Intellectual Property Law

ITO Yasushi

Corporate Law and Commercial Law

KAINO Michihiko

The Modern Anglo-American History of Legal Thought

KAJI Yuki

Criminal Procedure

KAJIYAMA Tamaka

Civil Law, Civil Execution Law

KAMATA Kaoruko

Corporate Law

KAMITANI Yu

Family Law in Modern Society

KATSUYAMA Michiko

Government and Parliamentary Studies

KAWAGUCHI Yasuhiro

Company Law, Financial Regulation, Financial Instrument Transaction Law

KAWASAKI Tomomi

Criminal Law

KAWASHIMA Shiro

Civil Procedure, Evidence, Law of Remedies, Bankruptcy, Judicial System

KAWAWA Noriko

Civil law, Consumer Protection Law, Contract Law, Law of Sales, Tort Law, Law Related to Digital Information

JIN Chun

Insolvency Law, Chinese Law, Asian Law

KINOSHITA Manako

Sociology of Law, Psychology of Law

KURAMI Tomoaki

Tax Law

KUROSAKA Noriko

Environmental Law, Administrative Law

NISHIMURA Yasuhiro

Rules of Evidence in Japanese Legal History

MURASE Kenta

Admissibility of Confessions

NONOMURA Kazuyoshi

Tort Law, Health Care Law

NUMOTO Yuta

Administrative Organization Law

OGINO Nao

Breach of Contract and Liability

OKADA Yukihiko

Civil Procedure

SAIKI Akihiro

Disclosure of Government Information and Protection of Personal Information

SAKAI Takeo

Legal Problems Regarding Social Security

SATO Yuri

Criminal procedure, Criminal Justice

SERYO Shingo

Competition Law and International Trade Law

TAKASUGI Naoshi

Private International Law

TANAKA Kenta

Freedom of Religion

TSUCHIDA Michio

Labor and Employment Law

UEDA Seiichiro

Comparative Studies of Contract Law Principles

UEDA Tatsuko

Labor Law, Social Security Law

WATANABE Yoshihiro

Labor law and dispute settlement system

YAMADA Satoshi

Criminal Attempts

YAMANE Takakuni

Intellectual Property Law

Department of Political Science**ABE Ryoko**

Strategic studies, American Security Strategy

ASANO Ryo

Chinese Politics, International Relations

HASEGAWA Kazutoshi

History of Western Political Thought

ICHIKAWA Yoshitaka

Policy Process, Public Administration, Local Government and Central-Local Relations

IIDA Takeshi

Political Behavior, Political Methodology

KANEHARA Nobukatsu

Decision making process of Japan's national security policy and History of Japan's foreign policy

MOCHIZUKI Shifumi

History of Japanese Political Thought

MORI Hiroki

Study of Political Process

MORI Yasuo

Political History of Modern Japan

MURATA Koji

U.S. Foreign Policy, U.S. Politics and Film Culture

NISHIZAWA Yoshitaka

Public Opinion, Voting Behavior

OSAKI Yuma

International Political Economy: Asian Economic Diplomacy

OYANE Satoshi

Theory of International Relations

RIKIHISA Masayuki

British Politics, Politics of Brexit

SUZUKI Ayame

Politics and Political Economy of Southeast Asia

TERADA Takashi

International Political Economy: Cooperation and Competition over Global Hegemony

WASHIE Yoshikatsu

Politics of European Integration

Faculty of Economics**Department of Economics****ARAWATARI Ryo**

Fiscal Policy and Social Security

AZUMA Yoshiaki

Studies of Production, Distribution, Savings and Capital Accumulation

FUKUOKA Masaaki

Industrialization of East Asia

FUNAHASHI Tsunehiro

Economics of Social Welfare

HARADA Sadao

Citizen participation and local environmental conservation.

HONRYO Takakazu

Theory of Communication, Game Theory

HOTTA Yuki

Analysis about Emergence of Business Cycle

ISHIDA Hazuki

Ecological Economics, Natural Resources and Energy Economics

IWASAWA Masamune

Developing Methods for Data Analysis

KASAI Takato

History and Development of Economics

KAWASHIMA Nobuko

Cultural Economics, Creative Industries, Cultural Policy

KISHI Motoshi

Ecological Economics, Environmental Economics, Theoretical Economics

KITAGAWA Masaaki

Japanese Economy and Macroeconomics

KITASAKA Shinichi

Japanese Economy and Macroeconomics

KOBASHI Akira

Firm Objectives, Organization and Behavior

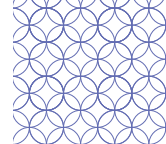
KOBAYASHI Chiharu

Industrial Organization

KOFUJI Hiroki

Regional Science and Urban Economics



**KOGA Yasushi**

Economic History of Japan: Monetary History, Whaling Industry History

KOGURE Kengo

Political Economy, Labor and Technology/AI, Gender

KUBO Tokujiro

International Finance

MITSUMATA Gaku

Study on the community-based natural resource management

MIYAMOTO Dai

Labor Economics, Study of Human Resource Development

MIYAZAKI Ko

Information Systems

MIYAZAWA Kazutoshi

Population Economics, Public Economics

MOMI Takeshi

General Equilibrium Theory

NAGASAWA Serika

Early Modern and Modern British Trade History

NIIZEKI Mikiyo

Applied Finance

NISHIOKA Mikio

Comparative Economic Thought in Entrepreneurial Activities and Modern Cities

NORIKUMO Shunei

Research on information systems in the social sciences

OCHIAI Hitoshi

Pleasure and Perspective

OKUDA Iari

Urban History in Modern Kyoto : The Dynamics of Communities and Neighborhoods

ONO Takashi

Analytical Political Economy

ONOZUKA Yoshimitsu

Political Debates on the International Capital and Labor Movements

OSHITA Yoshiyuki

Cultural Policy, Creative Economy

SAKODA Sayaka

Income Distribution and Social Inequality

SHIKANO Yoshiaki

Money and Banking in Japan

SUGE Ikki

Economic and Social History and Urban History of Modern Britain

TAKAI Toshiaki

Information System

TAKEHIRO Ryoji

Organization and Behaviors of Japanese Firm

TANAKA Yasuhito

Pure and Applied Microeconomics

TANIMURA Tomoki

Study on Industrial Cycle and Economic Crisis in Modern Capitalism

TSUNOI Masayuki

Economic History of the United States

WADA Yoshihiko

Ecological Economics, Ecological Impacts of Mining and Nuclear Development

WADA Yoshinori

Theoretical and empirical analysis of Behavioral and Religious Economics

YAGI Tadashi

Public Economics (Creative Economy, Economics of Education)

YAMAMORI Toru

Solidarity economy, care economy, and social policy

YOKOI Kazuhiko

Economic Globalization and the Chinese Economy

YOTSUYA Koichi

Economic Growth, Economics of Education

Faculty of Commerce

Department of Commerce

ASO Jun

Study of Industry: Shipbuilding and Shipping

CHEN Yanshuang

Business Management

CHOI Yonghoon

Marketing

ENDO Toshiyuki

Globalization and Asian Economy

FUKUMOTO Toshiki

Organization Studies, Organizational Behavior

HATTORI Shigeyuki

Global Financial Crisis and Monetary Policy

HISAMATSU Taro

Classical Theories of International Trade

IMANISHI Koji

Corporate Governance, Business and Society

INAMI Toru

International Harmonisation of Accounting Standards

IOKIBE Shingo

International Finance

ISHIDA Daisuke

Marketing Management

KAMEI Taiki

Business History, Socio-Economic History, Commercial History

KAWAI Takaharu

The Use of Accounting Information in Management Control

KAWAMITSU Naoki

Commodity History

KITAMURA Tomohiro

Empirical Studies on Efficiency and Productivity of Public Utilities

KOJIMA Hidenobu

Socio-Economics, History of Social Thought

KUNIEDA Yosuke

Customer relationship management

KUNO Seiya

Algorithmic trading and market stability

MAKI Daiki

Econometrics, Time Series Analysis

MARUMO Toshihiko

Banking and Finance

MIZOBUCHI Hideyuki

Index number theory, productivity analysis, well-being

NAGANUMA Ken

The diffusion of e-Commerce

NAITO Toru

Studies on Urban Agglomeration with GIS

NAKAGAWA Masaru

Globalization in Management Accounting

NAKAMICHI Kazushi

Business System, Strategic Management

NISHIKAWA Junpei

Economic Development in East Asia

NISHIMURA Sachiko

Tourism

OHARA Satomu

Product Innovation through Community

OTAHARA Jun

Management of Technology

SAKURAI Takanori

Valuation Using Financial Accounting Information

SASAKI Ichiro

Research on Individual Participation in Pension Insurance

SATO Ikuya

Sociological Analysis of Organizations, Research Methodology

SATO Kenichi

Global Business Communication

SATO Seiji

Country by Country Comparison of Financial Reporting System - Accounting and Culture -

SARUTA Fuyuki

Industrial organization (theory), Analysis of platforms

SAWADA Yusuke

Incentive design using accounting information

SEKI Tomohiro

SMEs (Small business) and Entrepreneurship

SHIGA Osamu

Modern Accounting

TABUCHI Taichi

Trade, Money & Power in the World Economy

TAGUCHI Satoshi

Behavioral accounting, future design

TAKAHASHI Hiroyuki

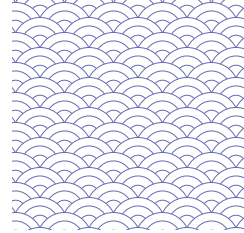
Building Marketing Strategy Based on Consumer Behavior

TANIMOTO Akira

Labor Management in Hospitality Industry

TOMITA Kenji

Strategic Management



TSUJIMURA Motoo

Decision Making under Uncertainty

UEDA Hirofumi

Financial Factors and Economic Activity

UEDA Masahiro

Empirical Analysis of Industrial Organizations

URYUHARA Yoko

Behavior Change Management, Social Marketing

XIAO Miao

The Accounting System in China

YAMAMOTO Tatsushi

Accounting Regulations and Social Welfare

YAMASHITA Mai

Nursing and Women's Labour in Modern Japan

YAMAUCHI Yuki

Business History

YOSHIKAWA Eiichiro

Laws and Rules of International Business Transactions;
Resolution of International Business Disputes

Faculty of Policy Studies

Department of Policy Studies

ADACHI Mitsuo

Investment, Market, and Business for Sustainable Society

Ofer FELDMAN

Political Psychology

FUJIMOTO Tetsushi

Work-Family Balance

HATAMOTO Yusuke

Social Welfare Administration • Life Structures

IGAWA Moegi

Empirical analyses on environment/energy/poverty issues

IGUCHI Mitsugu

The important point in Cultural and Tourism studies is Humanities.

IRIE Yoko

Organizational Issues in Local Governments

KAKIMOTO Akihito

Explore historically the thought systems of modern society

KAWAGUCHI Akira

Work-Life Balance and Gender Equality

KAWAI Keiji

Sports Law and Policy

KAWAKAMI Toshikazu

Applied Game Theory

KAWAURA Akihiko

Public Choice

KAZAMA Norio

Analysis on the Structures and Functions of Governance Network

KOSAKA Shinya

Transitional Justice, Peacebuilding, International Human Rights Law, International Humanitarian Law

KOTANI Mari

legitimacy of Environmental rulemaking, control of administrative discretion

KUBO Makoto

Well-being in the Work Organizations

MASUBUCHI Asako

Cold War Okinawa History, Medical History

MAYAMA Tatsushi

Public Administration

MIKAMI Masatsugu

Accountability, Policy Evaluation, ODA Evaluation

MIYOSHI Hiroaki

Technology, Social Welfare, and Public Policy

MUSASHI Katsuhiko

Legislative Process and Institutions in Parliament, Direct Democracy

NAKAJIMA Eri

How to realize SDGs in local area through social innovation

NAKAO Yuto

Administrative Law

NAKATA Yoshifumi

How Engineers Work Creatively

NEGISHI Shoko

International Finance and Development

NIIMI Yoko

International development, poverty, inequality, and gender

NODA Yu

Local Government Studies

NOMA Toshikatsu

Regional Finance

OKAMOTO Yumiko

Social Impacts of Fairtrade and Hereafter

OSHIMA Kayoko

Right to education, Students' human rights

OTA Hajime

Organization and Individuals

OWADA Junko

Community Design through Social Innovation

TADA Minoru

Marketing research based on affective science

TAKIMOTO Kanako

Happiness Studies in Asia

TANAKA Hideki

Organizations and Human Resource Management in Contemporary Society

TANAKA Hiroki

Regional Regeneration in the Aging society

TOGASHI Kosuke

International Politics, Eurasian Studies

TSUKIMURA Taro

Area Studies on the Balkans, Comparative Studies among Regional Conflicts

YAMAYA Kiyoshi

Policy Evaluation and Governmental Accountability

YOSHIDA Toru

Political Science (Comparative Politics; European Politics)

Faculty of Global and Regional Studies

Department of Global and Regional Studies

ABE Noriyuki

Chinese Film

AKIYAMA Yoko

Modern and Contemporary History of Switzerland

ASABA Yuki

Korean Politics and Diplomacy, Comparative Politics, Japan-Korea Relations

ENDO Toru

A Study of American and English Popular Culture

FUTAMURA Taro

Geographies of Agriculture and Food, Regional Studies of North America

James HEATHER

Second Language Acquisition, Applied Linguistics, Cultural Anthropology

HIGOMOTO Yoshio

American History, American Studies

INAGAKI Shunji

Second Language Acquisition, English Language Education, Linguistics

ISHII Kae

Social History (Modern and Contemporary German Society); Gender and "Civil Society"

ISHINO Mika

English Language Education, Classroom Interaction Research, Conversation Analysis

ITO Gengo

French Renaissance Literature and Thought

IZUMI Masumi

Asian Americans and Cultural Diversity in North America

KAMEYA Yurika

Contemporary French Society and Culture

KANZAKI Mai

Canadian Theatre and Performance

KO Young Jin

Korean Linguistics, Sociolinguistics

KUNO Kiyoko

Minority Studies, Spanish Area Studies

KURASHINA Itsuki

History of U.S. Foreign Relations, International Politics

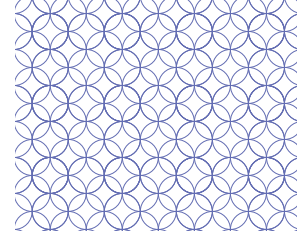
Matthew LARKING

Japanese Art History, Modern Art History and Theory

MIHARA Reiko

Comparative Education, Sociology of Education, Minority Studies



**MIYAZAKI Katsuhiko**

French Studies, Cultural Representation Studies,
Visual Studies

MIZUTANI Satoshi

British Imperial History / Colonial Studies

MONOBE Hiromi

History and Culture of Hawaii, History of Japanese
Americans

MUKAI Masaki

Global History, Islam in Maritime Region

NAKANO Yukio

Russian Emigre Literature, Translingual Literature

NAKASHIMA Yohei

European Integration, Western Political Thought

NECHAEVA Angelina

Russian Culture Abroad, Russian Emigration

OCHIAI Akiko

African American History and Culture

OGAWARA Hiroyuki

History of Japan-Korea Relations in Modern Age

OKI Sayaka

Literary Criticism, Literary Theory, Comparative
Cultural Studies

ONO Fumio

German Philosophy, Jewish Studies, History of
Educational Thoughts

OZAKI Shigeru

Language Testing, Education for International
Understanding, Language Education Policy

PARK Jonghoo

Modern Korean Grammar, Korean Language
Education

Susanna PAVLOSKA

English Language and Literature, Gender Studies

Andres PEREZ RIOBO

Global History, Spanish Education

QIAN Ou

Chinese History of Ideas, Outline of the Modern
Thought between Japan and China

SAKAMOTO Nami

Foreign Language Education, Narrative Inquiry,
Teacher Professional Development

SAKITA Tomoko

Cognitive Pragmatics, Reporting Discourse,
Gender Studies

SHIBATA Nobuko

Latin American Studies, Social Movements

SHIMIZU Minoru

History of Contemporary Art and Art Criticism

SOEJIMA Ichiro

Chinese Classical Philology, Sinology in Japan Edo
Period

TAKAGI Shigemitsu

History of Audio-visual Culture

TAKEUCHI Rika

Modern and Contemporary China Studies,
Historical Studies of Chinese Woman

David TARANCO

Translation, Travel Writing, Spain-Japan Relations

TATEBAYASHI Ryoichi

Contemporary Latin American Literature

TATEISHI Yoko

History and Politics of Russia and the Former
Soviet Union

USAMI Koichi

Social Policies in Latin America · Latin American
Studies

Aysun UYAR

International Relations, International Political
Economy, Regionalism

WAKO Masakazu

Comparative Study of Korean and Japanese,
Second Language Acquisition

WANG-KANDA, Liulan

Dynamics, Transformations and Religious
Co-existence of Chinese Diaspora in Asia and
Beyond

WATANABE Fumi

Art/s and Cultures of Oceania, Anthropology

YOON Haeyoung

British and Irish Studies, Ethnic Studies

Faculty of Culture and Information Science

Department of Culture and Information Science

ABE Masato

Complex systems including brain, behavior, society,
and ecosystems

FUKAGAWA Daiji

Algorithms for Discrete Optimization

FUKUDA Tomoko

The Heian Era Literature, Waka Literature

Gaetan RAPPO

History of Medieval Japan, History of Religion,
Digital History

HATANO Kenji

Data Management for Analyzing Big Data

HOSHI Hidehito

Linguistic Theory (Syntax)

IIO Takamasa

Social robotics

ITO Noriko

Functional Linguistics and Natural Language
Processing

KANBARA Tomoya

Research on hashtag recommendation methods for
images

KAWASE Akihiro

Quantitative Analysis of Cultural Phenomena,
Digital Humanitie

JIN Mingzhe (KIN Meitetsu)

Culture and Data Science

NAKANISHI Yoshinori

Statistical Science and Statistical Physics

NAKAYASU Mari

Arts and Cultures of East Asia

SAITO Motoyuki

Cognitive Science of Thinking

SAKATA Mamiko

Body Mediated Information

SANADA Teruki

Shadow education, Bullying at school

SANO Akiko

Film and Media Studies

SHEN Li (SHIN Riki)

Study of Linguistic Typology

SHIMOJIMA Atsushi

Effects of Explanation and Persuasion based on
Graphical Representations

SUGIO Takeshi

Visual Cognition

TAGUCHI Tetsuya

Comparative Cultural Studies

TANAKA Yu

Linguistics (Phonetics and Phonology)

TSUMURA Hiroomi

Sustainability on Resource Sharing of Local
Societies and Ethnic Groups

YADOHISA Hiroshi

Multivariate Data Analysis, Computational Statistics

YAMAGATA Mei

Social psychology of exclusion and reconciliation

YAMAUCHI Nobuyuki

English Linguistics, Corpus Linguistics

ZHENG Yuejun (TEI Yakugun)

Quantitative Research of Social Phenomena

Faculty of Science and Engineering

Department of Intelligent Information Engineering and Sciences

HAGA Hirohide

Painting Analysis with Computer

HASHIMOTO Masafumi

Autonomous/cooperative sensing of mobility robot

CHENG Jun

Communications Theory and Signal Processing

KATO Tsuneo

Information Processing of Second Language
Speech and Interface

KATSURAI Marie

Multimedia Retrieval and Data Mining

KIMURA Tomotaka

Communication Network Design and Analysis

OKUDA Masahiro

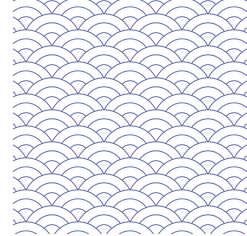
Intelligent information processing, machine learning

ONO Keiko

Intelligent Informatics, Kansei Informatics

TSUCHIYA Seiji

Research of Computer and Robot with Common
Sense



WATABE Hirokazu
Natural Language Understanding and Intelligent Robot

Department of Information Systems Design

IMOTO Keisuke
Sound event and scene analysis based on machine learning and signal processing

KIMURA Tatsuaki
Information and communication systems, probabilistic modeling and analysis

KOITA Takahiro
Harmonized Cloud Computing and Human Computation on Distributed Systems

OHSAKI Miho
Machine Learning and Knowledge Discovery

OKUBO Masashi
Human Interface

SATO Kenya
Distributed Systems with Internet of Things

SHIRAHAMA Kimiaki
Application of Artificial Intelligence to Multimedia Analysis

TAKAHASHI Kazuhiko
Intelligent Control Systems

TAMURA Akihiro
Natural Language Processing

Ivan TANEV
Evolutionary computing: implementation and application for design, optimization and control

TSUCHIYA Takao
Sound Field Rendering Systems

Department of Electrical Engineering

BABA Yoshihiro
Electromagnetic Compatibility

FUJIWARA Koji
Evaluation of Functionality of Magnetic Materials

INOUE Kaoru
Analysis and Control of Electro-Mechanical Systems

KATO Toshiji
Operation Analysis and Control of Electric and Electronic Circuit Systems

KONDO Koichi
Applied Mathematics

KOYAMA Daisuke
Applied Acoustic Devices and Measuring Techniques

MATSUKAWA Mami
Ultrasonic electronics and medical applications

NAGAOKA Naoto
Design and Numerical Simulation of Power and Infrastructure System

TAKAHASHI Yasuhito
Power Magnetics and Electromechanical Energy Conversion

WADA Motoi
Physics and Technology of Discharge Plasma

Department of Electronics

DEGUCHI Hiroyuki
Antenna Engineering and Electromagnetic Field Analysis

IBI Shinsuke
Stochastic Signal Processing for Communication Systems

IWAI Hisato
Radio Propagation in Wireless Communications

KASUYA Toshiro
Plasma Physics

OHTANI Naoki
Semiconductor Optical Devices, Optical Physics of Condensed Matters, Synthesis of Novel Fluorescent Materials

SAKAI Kenji
Development of advanced measurement system and material characterization using magnetism

SATO Yuuki
Functional Electronic Materials and their Applications

SUZUKI Masayuki
Photonics

TANAKA Tomoyuki
Partial differential equations

TODA Hiroyuki
Microwave Photonics and Nonlinear Fiber Optics

TSUJI Mikio
Electromagnetic-wave Analysis and Circuit-component Development in the Ultra High-frequency Region

Department of Mechanical and Systems Engineering

HIROGAKI Toshiki
Control Systems and Autonomous Automation for Manufacturing

INAGAKI Kazuhiro
Physics of fluid mechanics, turbulence modeling

INAOKA Kyoji
Dynamic Control of Heat and Fluid Flow, Development of High Performance Heat Exchangers

MATSUMURA Eriko
Spray Combustion Control for Maximizing Energy Efficiency and Reducing Emission

MATSUOKA Takashi
Mechanical Design, Composite Materials

MIYAMOTO Hiroyuki
Fabrication and Evaluation of Nanostructured Materials

NOGUCHI Takashi
Fluid Mechanics of Mixing and Transport Processes of Heat and Matter

OBUNAI Kiyotaka
Research on Reliability of Advanced Composite

SASADA Masahiro
Research on Material Deformation for Advanced Metal Forming

TAKUWA Hideki
Theory of Partial Differential Equations and Inverse Problems

TSUJIUCHI Nobutaka
Motion and Vibration Control as well as Human Dynamics

Department of Mechanical Engineering and Science

AOYAMA Eiichi
Development and Evaluation for Advanced Manufacturing

HARA Shumpei
Modification of Flow and Heat Transfer by Small Disturbances or Additives

HIRATA Katsuya
Hydraulics, Aerodynamics and Fluid Mechanics in Mechanical Engineering

ITO Akihito
Motion Control of Robots

NAKAMURA Morimasa
Surface Generations for High Functionalities of Machine Elements

OKUBO Kazuya
Development of Eco-friendly Natural Fiber Composite Materials

SENDA Jiro
Analysis of High Efficiency and Low Emission Spray Combustion

TAKAOKA Masanori
Self-organized Structures and Statistics in Globally Disordered System

TANAKA Tatsuya
Research on Forming Processing of Metal, a Polymer Material, and Its Composite Material

YUASA Motohiro
Development of high-performance metals and alloys via microstructure control

Department of Molecular Chemistry and Biochemistry

DOI Takayuki
Development of Battery Reactions

ENDO Takatsugu
Structure, Dynamics and Physical Properties of Ionic Liquids

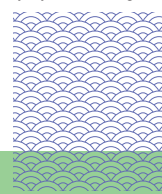
HITOMI Yutaka
Chemistry of Reactive Oxygen Species and Oxidation Reaction

INABA Minoru
Materials for Rechargeable Batteries and Fuel Cells

KATO Masaki
Solid State Physics and Chemistry of Transition Metal Compounds

KIMURA Yoshifumi
Photo-chemistry and Invention of New Materials Using Designer Fluids

KITAGISHI Hiroaki
Development of Synthetic Hemoglobin, Artificial Blood, and Drug Delivery Systems using Cyclodextrins



Directory of Academic Staff

KODERA Masahito

Development of Highly Efficient Functional Molecules for Understanding of Biological Systems

KOGA Tomoyuki

Polymer Chemistry, Advanced Biomaterials

MIZUTANI Tadashi

Mechanical and Electronic Organic Materials

NISHIMURA Shinnosuke

Polymer Chemistry, Polymer Biomaterials

OTA Hiroto

Synthesis, functionalization, and design of magnetic materials

Department of Chemical Engineering and Materials Science

HASHIMOTO Masahiko

Biosensing Technology

ISHIDA Naoyuki

Colloid and Interface Chemistry

MATSUMOTO Michiaki

Development of Environmental-friendly Bioseparation Process

SHIOI Akihisa

Design of Chemical System Moving Like Living Matter

SHIRAKAWA Yoshiyuki

Design Engineering of Functional Particles

TAHARA Yoshio

Drug Delivery System

TAKENAKA Sakae

Catalysis and Catalysts

TSUCHIYA Katsumi

Transport Phenomena of Multiphase Dispersion in Environmental Issues

TSUKAGOSHI Kazuhiko

Specific microfluidic flow observed in a micro-space

YAMAMOTO Daigo

Colloid and Interface Science

YOSHIDA Mikio

Controls of Particle Flowability and Adhesiveness

Department of Environmental Systems Science

AKAO Satoshi

Environmental and Sanitary Engineering

FUKUMA Koji

Environmental Magnetism

GOTO Takuya

New Energy Systems

HASEGAWA Motohiro

Soil Biology

HAYASHIDA Akira

Earth System Science

KADOH Daisuke

Elementary particle physics

MORIMITSU Masatsugu

Development of next-generation secondary battery and water electrolysis

OSONO Takashi

Ecology, Biodiversity Science, and Fungi

TSUTSUMI Hiroyuki

Earthquake Geology, Tectonic Geomorphology

YAMANE Shozo

Atmosphere and Climate Dynamics

YOKOO Yoriko

Environmental Geochemistry

Department of Mathematical Sciences

ASAOKA Masayuki

Topological and geometrical aspects of dynamical systems

IMAI Hitoshi

Numerical Analysis

KAWAGUCHI Shu

Algebraic Geometry

MIKI Hiroshi

Applied Mathematics, Mathematical Physics

SAITO Seiji

Qualitative Theories of Ordinary Differential / Difference Equation

TAKEI Yoshitsugu

Analysis, Differential Equations

TSUDA Hiroshi

Financial Technology, Data Science, Machine Learning

Center for Laboratory Studies

ONISHI Keiichiro

Natural Products Chemistry, Bioactive Compounds

Faculty of Life and Medical Sciences

Department of Biomedical Engineering

ITO Toshiaki

Nonlinear Continuous and Discrete Mathematical Models and its Application

KAWAGUCHI Masataka

Vibration analysis to reduce vibration for machineries and structure

KENMOTSU Takahiro

Biological Physics

KOIZUMI Noriko

Tissue Engineering and Drug Development for Eye Diseases

MORITA Yusuke

Development of Biomaterial and Evaluation Method for Tissue Engineering

OKUMURA Naoki

Development of New Therapeutic Modality for Treating Eye Diseases

TANAKA Kazuto

Process Design and Evaluation of Mechanical Properties of Engineering Materials, Composite Materials, Micromaterials and Biomaterials

TSUMUGIWA Toru

Robotics, Control Engineering

WATANABE Kimitaka

Luna probe, Bio-mimicry, Management of Technology

YAMAMOTO Koji

Analysis of Mechanical Function and Molecular Expression on Living Tissue

YOKOGAWA Ryuichi

Biomechanics, Bio-robotics

Department of Biomedical Sciences and Informatics

AKIYAMA Iwaki

Ultrasonic Imaging and Bio-effects by Exposure to Ultrasound

HIROYASU Tomoyuki

Intelligent processing of human informatics using AI and ICT

HIRYU Shizuko

Behavioral and Engineering Study for Bat's Biosonar

HIWA Satoru

Cognitive Neuroscience and Brain Informatics

KOBAYASHI Kota

Neuroethology: Hearing and Vocal Communications

OE Yohei

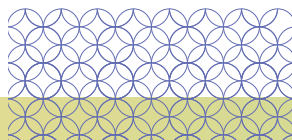
Organic chemistry: organic synthesis, transition metal complexes, catalytic reactions and analytical chemistry

OHTA Tetsuo

Effective Synthesis of Biologically Active Compounds and their Functions

SADAKANE Koichiro

Biological Physics, Soft Matter Physics



TAKAYANAGI Shinji

Fabrication and Evaluation of Piezoelectric Materials, Ultrasonic Measurements

TANIOKA Kensuke

Methodology of multivariate data analysis

Department of Medical Life Systems

FUNAMOTO Satoru

Inhibition of A β Production

ICHIKAWA Hiroshi

Oxidative Stress, Functional Food Medicine

IKEGAWA Masaya

Genomics and Proteomics for Human and Model Organisms

IWAISAKO Keiko

Basic and Clinical Research in the Field of Gastroenterology and Hepatology

KAKUDA Nobuto

The brain alteration due to Alzheimer's Disease

KOBAYASHI Akira

Basic Research on Cancer Biology and Therapeutics

MITA Yuichiro

Analysis of the Pathogenesis of Diabetes.

NISHIKAWA Keizo

Basic Bone Biology and Immunology

NISHIKAWA Kiyotaka

Drug Discovery based on Cell Biology

NOGUCHI Noriko

Mechanisms Underlying Oxidative Stress Inducing Diseases and Defense Systems

SAITO Naoto

Functional Biology of Neuroscience

TAKAHASHI Miho

Intracellular Vesicular Transport

URANO Yasuomi

Study on Lipid Metabolism and Neurodegenerative Diseases

WAKU Tsuyoshi

Molecular biology of cancer microenvironment

WATANABE Masataka

Education and Practice of Science Communication

YONEI Yoshikazu

Evaluation of Aging, Risk Factors and Glycation Stress

Faculty of Health and Sports Science

Department of Health and Sports Science

ARAI Aya

Science for Sports Training/Biomechanics

EBINE Naoyuki

Human Nutrition, Energy Metabolism, Physical Activity

ENDO Hanae

International Development through Sport, Sport for Development and Peace

FUJISAWA Yoshihiko

A Study on the Ability and Quality of a Good Athlete

FUKUOKA Yoshiyuki

Cross Adaptation of Respiration-Circulation-Thermal System under Low Temperature and Hypoxia Exposure

HOJO Tatsuya

Research for Sports Injury, Conservative Therapy of Musculoskeletal Disorder

ISHII Kojiro

Development of Exercise Prescription

ISHIKURA Tadao

Motor Control and Learning, Sports Psychology

IWATA Shotaro

Creation of good health and physical education lesson and teacher professional development

IZAWA Tetsuya

Sports Biochemistry

KAMIBAYASHI Kiyotaka

Neurophysiology of Human Movement, Motor Control and Learning

KAWANISHI Masahiro

Sports for People with Disabilities

MATSUKURA Keita

Sports Coaching

NAKAMURA Yasuo

Sports Biomechanics

NINOMIYA Hiroaki

Sport Marketing

SHOJI Hiroto

Sport Business

TAKAHASHI Katsuki

Skeletal muscle design

TAKAKURA Hisashi

Oxidative Metabolism in Skeletal Muscle

TAKEDA Masaki

Physiological Base in Sports Performance and Training

TAZUKE Shunichi

Theory and Practice for acquisition of "Knack" and "Intuition"

TSUCHIYA Yoshifumi

A regulation of the satellite cells

WAKAHARA Taku

Skeletal Muscle Mechanics

YANAGITA Masahiko

Exercise Epidemiology

YANASE Ko

Rehabilitation

YOKOYAMA Katsuhiko

Cultural Study of Sports/ Sports Policy and Management

Faculty of Psychology

Department of Psychology

AOYAMA Kenjiro

Psychology of Learning, Behavior Analysis, Psychology of Eating Behavior

FUJIMURA Tomomi

Psychophysiology, Communication of Emotion

HATA Toshimichi

Physiological Psychology, Behavioral Neuroscience

ISHIKAWA Shinichi

Clinical Child and Adolescent Psychology

KAMBARA Kohei

Clinical Psychology, Cognitive Behavioral Therapy

KOHYAMA Takaya

Student Guidance for Social and Emotional Development

MORI Mayumi

Criminal Psychology

MUTO Takashi

Clinical Behavior Analysis

NAKAYACHI Kazuya

Risk Perception and Disaster Preparedness

OIKAWA Masanori

Social Psychology

OKITSU Mariko

Clinical Psychology, Family Psychology

OYA Aiko

Clinical Psychology, Behavior Analysis

SUGIYAMA Hiroko

Clinical Psychology, Personality Psychology

TAKEHARA Takuma

Cognitive Psychology, Facial Attractiveness

TANAKA Ayumi

Human Motivation

TSUDA Hiroyuki

Cognitive Psychology

TSUDA Natsumi

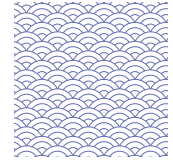
Clinical Psychology and Clinical Behavior Analysis

UCHIYAMA Ichiro

Development of Cognition and Emotional in Infancy

YOGO Masao

Psychological Prevention and Care for Trauma and Stress



Faculty of Global Communications

Department of Global Communications

Regine DIETH

Japanese Society and Gender

Bettina GILDENHARD

Migration Studies, Multicultural Coexistence

FUKUSHIMA Marcelo

International Economics, International Business

HASEBE Yoichiro

Cognitive Linguistics and Corpus Linguistics

ISE Akira

French Literature of the 20th Century

GUO Yunhui (KAKU Unki)

Chinese linguistics

KAWAHARA Daisuke

American Culture, Film Studies

KUBOTA Mitsuo

Sociolinguistics

Dana John LINGLEY

Applied Linguistics, Second language motivation

MATSUKI Keiko

Communication from Linguistic Anthropological Perspectives

MINAI Masahiro

Eighteenth Century English Literature

Ghislain MOUTON

Applied linguistics, Acquisition of French as a second language, Intercultural Communication

NAKAMURA Tsuyako

American Studies (Comparative Study of Women's Labor Issues between Japan and the U.S.)

NAKANISHI Hiroki

A Historical Study of the Languages and Dialects Distributed in Southeast China

NAKATA Yoshiyuki

English Language Education, Applied Linguistics

Peter NEFF

Applied Linguistics, Teaching English as a Foreign Language

Sun SHUQIAO(SON Jyukyoku)

Chinese linguistics, Chinese-Japanese Contrastive Studies

SUDO Jun

Phonetics, Japanese as a Second Language

SUZUKI Mikiko

Second Language Acquisition, TESOL

SUZUKI Nobuko

Japanese Language Education, Career education for international students

SUWA Akira

Nineteenth-century and Contemporary British literature

Roehi SYBING

Intercultural understanding, multilingual dialogue, qualitative research methodology

TAMAI Fumie

Nineteenth-century British Culture and Literature

TERANISHI Takahiro

Concept Formation by Metaphorical Extensions

TANG Hau-Yun (TOU Kouun)

Taiwanese and Chinese Modern Literature

UCHIDA Naotaka

Chinese Modern History

UCHINO Crystal Kimi

Cultural Studies, Social History, Ethnic Studies

WAKITA Riko

Japanese Education, Writing Educational

YOSHIDA Yuku

Phonology of Linguistic Variations: the Kyoto Dialect, Englishes and Italian Dialects

Graduate School of Policy and Management

ADACHI Mitsuo

Investment, Market, and Business for Sustainable Society

Ofer FELDMAN

Political Psychology

FUJIMOTO Tetsushi

Work-Family Balance

HARADA Takashi

Library and Information Science

HATAMOTO Yusuke

Social Welfare Administration · Life Structures

IGUCHI Mitsugu

The important point in Cultural and Tourism studies is Humanities.

IRIE Yoko

Organizational Issues in Local Governments

KAKIMOTO Akihito

Explore historically the thought systems of modern society

KAWAGUCHI Akira

Work-Life Balance and Gender Equality

KAWAI Keiji

Sports Law and Policy

KAWAKAMI Toshikazu

Applied Game Theory

KAWAURA Akihiko

Public Choice

KAZAMA Norio

Analysis on the Structures and Functions of Governance Network

KOTANI Mari

legitimacy of Environmental rulemaking, control of administrative discretion

KUBO Makoto

Well-being in the Work Organizations

MAYAMA Tatsushi

Public Administration

MIYOSHI Hiroaki

Technology, Social Welfare, and Public Policy

MUSASHI Katsuhiko

Legislative Process and Institutions in Parliament, Direct Democracy

NAKAJIMA Eri

How to realize SDGs in local area through social innovation

NAKATA Yoshifumi

How Engineers Work Creatively

NEGISHI Shoko

International Finance and Development

NIIMI Yoko

International development, poverty, inequality, and gender

NODA Yu

Local Government Studies

NOMA Toshikatsu

Regional Finance

OKAMOTO Yumiko

Social Impacts of Fairtrade and Hereafter

OSHIMA Kayoko

Right to education, Students' human rights

OTA Hajime

Organization and Individuals

OWADA Junko

Community Design through Social Innovation

TADA Minoru

Marketing research based on affective science

TANAKA Hideki

Organizations and Human Resource Management in Contemporary Society

TANAKA Hiroki

Regional Regeneration in the Aging society

TOGASHI Kosuke

International Politics, Eurasian Studies

TSUKIMURA Taro

Area Studies on the Balkans, Comparative Studies among Regional Conflicts

WANG Jiao

Human Resource Management

YAMAYA Kiyoshi

Policy Evaluation and Governmental Accountability

YOSHIDA Toru

Political Science (Comparative Politics ; European Politics)

Graduate School of Global Studies

AKIBAYASHI Kozue

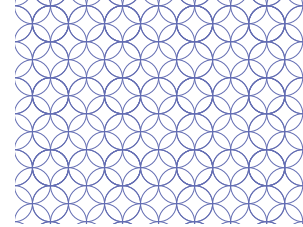
Gender and Peace

Gavin J. CAMPBELL

American History, American Religion

Anne GONON

Social Violence and Care Studies

**KANNO Yuka**

Queer Studies, Film and Visual Culture Studies

KIKUCHI Keisuke

Globalization Theory, Racism Studies, French Studies

MIMAKI Seiko

American Politics and Diplomacy, International Relations (IR)

MINAMIKAWA Fuminori

Sociology, Race and Ethnicity, Migration Studies

MINE Yoichi

Development Studies, Human Security Studies

MURATA Yujiro

Intellectual History of China, Modern Chinese History, Sino-Japan Relations in the Modern Era

NAITO Masanori

Middle Eastern Studies, International Migration Studies

NAKANISHI Hisae

Conflict Prevention in the Middle East and Eurasia, International Cooperation

NISHIKAWA Yukiko

International relations and security in East and Southeast Asia

OKANO Yayo

Western Political Philosophy, Feminist Political Theory

OTA Osamu

Korean Studies, Contemporary Korean History, History of Japanese-Korean Relations

OYAMADA Eiji

Governance and development studies in developing/emerging countries

QIAN Ou

Outline of the Modern Thought between Japan and China

TOMIYAMA Ichiro

Japanese History, Okinawan Studies Cultural Studies

YAN Shanping

Chinese Economy and Society, Development Economics

ZHOU Jun

Political History of China, History of the Chinese Communist Party

Graduate School of Brain Science**KANEKO Naoko**

Neuronal production and regeneration in the adult brain

MASAMIZU Yoshito

Development and Application of Techniques to Construct Novel Neural Circuits

MATSUI Teppei

Neurocomputation

MISONO Hiroaki

Molecular Mechanisms of Alzheimer's Disease

MOTOYAMA Jun

Molecular Mechanisms Regulating Brain Development and Maturation

SAKABA Takeshi

Mechanisms of synaptic Transmission and plasticity

TAKAHASHI Susumu

Understanding Cognitive and Behavioral Functions of the Brain

TAKAMORI Shigeo

Molecular Mechanisms of Neurotransmitter Release

Law School**ASANO Yuki**

Philosophy of Law, Basic Theory of Private Law, Legal Pluralism

FUKAYA Itaru

Civil Law

HAMADA Tsuyoshi

Code of Criminal Procedure

HAYASHI Shoichi

Rule of Evidence in Civil Procedure

Colin P.A. JONES

Anglo-American Law and Comparative Law Focused on Japan, Robot Law ; The Law of Identity

KASAHARA Hiroshi

Research for Competition Law and Policy (Japan and EU)

KINOSHITA Koji

Laws on Insurance Contracts and Regulation on Insurance Business

MATSUBARA Hisatoshi

Knowledge of Illegality and Criminal responsibility

MATSUMOTO Tetsuji

Economic Liberties, Personal Autonomy and the Constitution

MIYUKI Masaki

Constitutional Law, Separation of Powers

MURANAKA Takashi

Labor Law

NAKANISHI Masashi

Bankruptcy Law

ONAKA Arinobu

Law of Contract and Comparative Law

SAEKI Yuji

Administrative Law

SAKAMAKI Ayami

Tax Law

SAKUMA Takeshi

Civil Law, Trusts Law

SASAKI Noriko

Civil law, German Civil law

SHUMI Mitsuo

A Comparative Study of Japanese, American and German Criminal Justice

SOGO Taro

Criminal Law, Complicity

SONODA Kenji

Civil Procedure

SUZAKI Hiroshi

Insurance Law

TAKAHASHI Koji

International Trade Law, Private International Law, International Civil Procedure

YOKOTA Kohei

Child Law

Graduate School of Business**Business Studies****ARII Ken**

Environmental conservation and preservation

Philippe BYOSIERE

Knowledge Management, Leadership, Stress in Organizations

Eugene CHOI

Strategy & Global Business, Kyoto & Kyoto-Based Enterprises, Technology & Innovation Management, Knowledge Creation & Entrepreneurship

FUJIWARA Koichi

Financial Engineering, Statistics, Economics

INOUE Fukuko

Organizational Behavior, Human Resource Management, Organization Change

KATO Yutaka

Administrative Accounting, Cost Accounting

KAWAMINAMI Junichi

Marketing, Communications, Corporate Strategy and Culture

KODAMA Toshihiro

Small Business Management

Se-il MOON

Urban Economics, Transport Economics

MORI Yoshihiro

Innovation Management

NOSE Yoshiaki

Corporate Finance

YAMASHITA Takako

Marketing, Consumer Behavior

Global Business and Management Studies**Robert W. ASPINALL**

The Political and Educational Systems of Japan and the UK

Isabell HANDLER

Cultural Tourism, Destination Management, Sustainable Tourism, Cultural Management

IIZUKA Mari

Sustainability and Business Ethics, Well-being, Japanese and Asian Business Management



Directory of Academic Staff

IZUMI Masumi

International Migration, North American Race Relations, Law and Civil Liberties

OKUDAIRA Hiroko

Labor Economics, Economics of Organization and Human Resource Management, Data Analysis on Economics Issues

Philip SUGAI

Marketing, Innovation, Responsible Marketing

Yong YIN

Operations Management, Sustainable Operations, Flexible and Agile Organization, Manufacturing Strategy

YOSHIDA Etsuaki

International Finance, Business in Emerging Economics, Islamic Finance

The Endowed Education and Research Project

OKI Katsutoshi

Corporate Planning & Strategy

Center for Christian Culture

KOSHIKAWA Hirohide

Practical Theology (Liturgy, Mission, Pastoral Care)

MORITA Yoshiki

The History and Practice of Christian Education in Japan

Institute for Study of Humanities and Social Sciences

HAYASHIDA Hideki

Development Economics, Study of Indonesian Economy

MOTOOKA Takuya

Regional Studies of Modern Japan, Urban Social Problems

SEKIGUCHI Hiroshi

Modern Japanese History of Thought, Culture and Society

Harris Science Research Institute

MASU Taichi

Science Communication in Mass media

Philip TROMOVITCH

Research on Human Sexuality

SUZUKI Yuta

Physical Chemistry for In-Situ Resource Utilization

International Institute of American Studies

ISHIGURO Anri

Jewish Studies, American Jewish Women's History, Zionist Thought

KAWANABE Takeshi

The U. S. Constitution, Constitutional Law, Comparative Studies between the U. S. and Japan of Judicial Selections and Dismissals

Doshisha University Historical Museum

HAMANAKA Kunihiro

Japanese Archaeology – Roof Tile, Temple, City –

WAKABAYASHI Kunihiro

Japanese Archaeology, Prehistory

Center for Learning Support and Faculty Development

MIYATA Naoko

Social Network, Work Value

SAWA Koji

Mathematical Sciences, Mathematical Logic

CHO Jiyoung

Medieval Japanese Literature, Japanese-Korean Narrative Literature

KIMURA Chika

Appropriate and Effective Use of Information and Information Technology

Center for License and Qualification

HARADA Takashi

Library and Information Science

HONDA Chiaki

Citizenship Education, Education Policy, Teaching Materials Development

INOUE Hiroshi

Guidance and Counselling to Respect Each Individual

MORIGUCHI Hirokazu

Social Studies

NAKASE Koichi

Special Needs Education, Education for Deaf and Hard of Hearing Children

OKUNO Hiroyuki

Curriculum Development of Social Studies

SATO Sho

Usage Analysis of Libraries and Information Services

TANAKA Kiho

Human Motivation, Intercultural Education

YAMAGUCHI Yosuke

Cognitive Psychology, Education on Creative Thinking

YANAGISAWA Akinori

Studies on School Educational Practices

Center for Global Education

Anya C. BENSON

Contemporary Japanese media and children's media cultures

ARII Ken

Environmental conservation and preservation

Robert W. ASPINALL

The Political and Educational Systems of Japan and the UK

Center for Japanese Language and Culture

DAIKUHARA Hayato

Japanese Discourse Analysis

HARADA Tomoko

Japanese Linguistics, Japanese Language Education

HIRA Miyuki

Japanese Linguistics, Japanese Language Education

LI Changbo

Linguistics, History of Japanese Language, Historical Comparative Stylistics

MATSUMOTO Shusuke

Japanese Linguistics, Japanese Language Education

SUH Yoon Soon

Japanese Linguistics, Sociolinguistics, Comparative Study of Japanese and Korean Languages

The Institute for the Liberal Arts

Colin DAVIS

International Economics and Economic Growth

Gregory POOLE

Anthropology of Education and Language

Gill STEEL

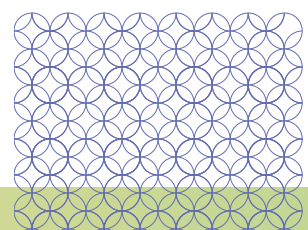
Comparative Politics, Public Opinion, Gender

Jennifer MCGUIRE

Educational Anthropology, Deaf Studies, Disability Studies

David UVA

History Education, Japanese History, and Colonial History



Organization for Research Initiatives and Development

FUJINAGA Ayano

Schopenhauer Studies as Transcendental Philosophy

FUJIOKA Emyo

Understanding of behavioral ecology of echolocating bats in the wild

HIROMITSU Yuya

Motor learning/control, Observational learning, Sport psychology

ITAKURA Shoji

Development of Sociability in Infants

KATO Masaharu

Development of human communication

KAWAMI Fuminori

Inequality in Housing Recovery After Disasters

KITANI Akihiro

History (Especially Focused on the Modern and Contemporary History of Okinawa)

KOBATAKE Hidekazu

Interdisciplinary Research for Environmental and Natural Science

MATSUBARA Kohei

Clinical Child and Adolescent Psychology

NISHIKAWA Kazuki

Food culture history of modern Japan

OKUDA Kohei

Development of tough composite materials by imitating biominerals

SHIMADA Yoko

Children and Sound Environment

SHIROTA Ai

Scientific research on human sleep

TAIRA Kosuke

French political thought

TANAKA Seiya

High temperature materials chemistry

TENG Rui

Cooperative Internet of Things

TAKAHASHI Yuri

Urban Anthropology (Asian American)

TSUZUKU Ayako

English Education / Foreign Language Learning

YAGI Tomoki

Performing Arts and Stories at Temples in the Edo period

WADA Masaya

Arendt Studies/Contemporary French Political Philosophy

Suzuki Takeo

Sociological Study on Multiethnic Conflict and Conviviality

Center for Advanced Promotion Support for Graduate Schools

AZECHI Hironobu

Neural mechanisms of cognition and behavior

HANAWA Kyoko

Molecular Mechanism of Signal Transduction in Brain

HASHIMOTODANI Yuki

Molecular Mechanisms Underlying Synaptic Plasticity

HAYASHI Kenji

Functional development of the mouse primary visual cortex

IDE Kaoru

Understanding Cognitive and Behavioral Functions of the Brain

ITO Yuki

Neural mechanism of multisensory integration

KAWANO Hiroyuki

Synaptic transmission in the central nervous system

KIDOKORO Hinako

The Basis for Brain Development and Morphogenesis

MIKI Takafumi

Comprehensive Understanding of Neurotransmission in the Central Nervous System

NISHIMURA Kaneyasu

Regeneration of neuronal function using human induced pluripotent stem cells

OSAKI Hironobu

Neural circuits of pain recognition

SOBU Yuriko

Analysis of the migration mechanism of newborn neurons in the adult brain

TORII Tomohiro

Analysis of the Axo-glial Network in the Central Neural System

YONEMURA Yoji

Regulation of Protein Trafficking

Institute for Advanced Research and Education

ISHIKAWA Masamichi

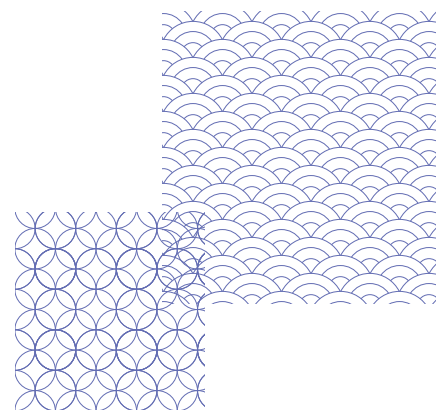
Future Design for yourself

KAJIKI Shinya

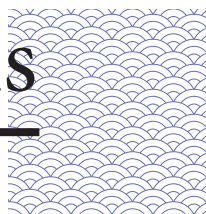
History of Big Science, History of Energy Conservation

KAMIURA Moto

Mathematical Informatics, Philosophy of Information



Partner Institutions



► International Cooperation on a University level

Europe

Azerbaijan

Khazar University

Belgium

Thomas More University of Applied Sciences
The Université Libre de Bruxelles

Czech Republic

Charles University
Masaryk University
University of West Bohemia

Denmark

Aarhus University

Finland

University of Eastern Finland
University of Helsinki
Tampere University

France

Aix-Marseille Université
École Centrale de Lille
École Centrale de Lyon
École Centrale de Marseille
École Centrale de Nantes
CentraleSupélec
L'École des Hautes Etudes en Sciences Sociales
Excellia Group
Institut d'Etudes Politiques de Lyon
Institut d'Etudes Politiques de Rennes
L'Institut d'Etudes Politiques de Saint-Germain-en-Laye
Institut National des Langues et Civilisations Orientales (INALCO)
École Nationale Supérieure des Mines de Paris
Sciences Po
Sorbonne Université
Université Paris Nanterre
Université de Strasbourg

Germany

Eberhard Karls Universität Tübingen
Heinrich Heine University Düsseldorf
Humboldt-Universität zu Berlin
Johann Wolfgang Goethe-Universität Frankfurt Am Main
Johannes Gutenberg-Universität Mainz
Karlsruher Institut für Technologie
Fakultät für Kulturwissenschaften,
Ludwig-Maximilians-Universität München

Hungary

Eötvös Loránd University
The University of Pécs

Ireland

Faculty of Humanities and Social Sciences,
Dublin City University

Italy

Alma Mater Studiorum - Università di Bologna
Sapienza - Università di Roma
Università Ca' Foscari Venezia
Università degli Studi di Milano
Università di Torino

Kazakhstan

L.N. Gumilyov Eurasian National University

Lithuania

Vytautas Magnus University

Netherlands

The Hague University of Applied Sciences
Universiteit Leiden

Norway

Norwegian University of Science and Technology
University of Bergen
University of Oslo

Poland

Jagiellonian University
University of Warsaw

Romania

The University of Bucharest

Russia

Saint Petersburg State University of Economics
Yaroslav-the-Wise Novgorod State University

Spain

Universidad de Salamanca
Universidad Católica San Antonio de Murcia
Universidad Autónoma de Barcelona
Universidad Pompeu Fabra

Sweden

School of Business, Economics and Law,
University of Gothenburg

Switzerland

Universität Luzern
Universität Zürich

U.K.

School of Oriental and African Studies (SOAS)
- University of London
St Catharine's College, Cambridge
The University of Edinburgh
University of Essex
University of Leeds
University of Manchester
The University of Sheffield
University of Southampton
The University of Warwick
The University of York

Africa & Middle East

Egypt

Alexandria University

Ethiopia

Addis Ababa University

Israel

The Hebrew University of Jerusalem

Kenya

Strathmore University

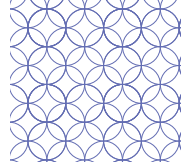
Turkey

Middle East Technical University
Sabanci University

Asia

China

Beijing Normal University
The Chinese University of Hong Kong
Chongqing University of Posts and Telecommunications
City University of Hong Kong
Dalian University of Foreign Languages
The Education University of Hong Kong
Fudan University
Jilin University
Jinan University
Lingnan University
Northeast Normal University
Northwest University
Ocean University of China
Peking University
Department of History, Peking University
Renmin University of China
Sichuan University
Tianjin Foreign Studies University
Tsinghua University



Wuhan University
 Xiangtan University
 Xi'an Jiaotong University
 Xidian University
 Zhejiang A & F University

India

Amrita University

Indonesia

Universitas Gadjah Mada
 Universitas Pendidikan Indonesia

Korea

Chonnam National University
 Ewha Womans University
 Hankuk University of Foreign Studies
 Incheon National University
 Korea University
 Seoul National University
 Seoul Women's University
 University of Seoul
 Yeungnam University
 Yonsei University

Malaysia

International Islamic University Malaysia
 Universiti Sains Malaysia
 University of Malaya

Mongolia

National University of Mongolia

Nepal

Tribhuvan University

Philippines

Ateneo de Manila University
 De La Salle University
 University of the Philippines Diliman

Taiwan

Chinese Culture University
 Fu Jen Catholic University
 National Chengchi University
 National Chung Cheng University
 National Taiwan Normal University
 National Taiwan University
 National Tsing Hua University
 Providence University
 Soochow University
 Tamkang University

Thailand

Chulalongkorn University
 Payap University
 Thammasat University

Vietnam

Foreign Trade University
 Hanoi University
 Hanoi University of Science and Technology
 Ho Chi Minh City University of Technology

Oceania

Australia

Charles Darwin University
 Deakin University
 Macquarie University
 Murdoch University
 The University of Melbourne
 University of New England
 The University of New South Wales
 The University of Sydney
 University of the Sunshine Coast
 University of Wollongong

New Zealand

Victoria University of Wellington

North, Central & South America

Argentina

Universidad Torcuato di Tella

Brazil

Universidade de São Paulo

Canada

Acadia University
 Bishop's University
 Lakehead University
 Royal Roads University
 The University of British Columbia
 Faculté des arts et des sciences
 Université de Montréal
 University of Victoria
 The University of Winnipeg

Chile

Pontificia Universidad Católica de Chile

Costa Rica

Universidad de Costa Rica

Mexico

Universidad de las Américas, Puebla

U.S.A.

Amherst College
 Bates College
 Bucknell University
 Carleton College
 Colby College
 Connecticut College
 Mount Holyoke College
 Oberlin College
 Pomona College
 Smith College
 Wesleyan University
 Whitman College
 Williams College
 Boston University
 Brown University
 Columbia University (including Barnard College)
 Cornell University
 Emory University
 Harvard University
 Princeton University
 Stanford University
 The University of Chicago
 University of Pennsylvania
 University of Virginia
 Washington University in St. Louis
 Yale University
 Arkansas Tech University
 Embry-Riddle Aeronautical University
 George Mason University
 Kalamazoo College
 Linfield University
 Millikin University
 Murray State University
 Northeastern University
 Portland State University
 Rochester Institute of Technology
 Salve Regina University
 San Diego State University
 St. Mary's University
 University of California
 University of California, Davis
 University of Colorado Boulder
 University of Denver
 University of Hawai'i at Hilo
 University of Hawai'i at Mānoa
 University of Missouri
 The University of Montana
 University of Nebraska at Kearney
 The University of New Orleans
 The University of North Carolina at Charlotte
 The University of Utah
 Western Michigan University

Partner Institutions

► International Cooperation on a Faculty / Graduate school and Reserch center level

* indicates International Cooperations on a research center level

Europe

Austria

Technische Universität Wien

Azerbaijan

School of Public and International Affairs,
ADA University

Belgium

Université de MONS

Czech Republic

Czech Technical University in Prague
Faculty of Mechanical Engineering,
University of West Bohemia

Denmark

Department of Culture and Global Studies,
Aalborg University

France

Toulouse 1 Capitole University
École Nationale Supérieure des
Mines d'Albi-Carmaux
Faculty of Science, Polytech Marseille,
Aix-Marseille University
École Centrale de Lille
École Centrale de Lyon
École Centrale de Marseille
École Centrale de Nantes
CentraleSupélec
École Nationale Supérieure de Chimie de Lille
École Supérieure de Physique et de
Chimie Industrielles de la Ville de Paris
École Nationale Supérieure des Mines de Paris
Université Paris Descartes, Faculty of Basic and
Biomedical Sciences
Faculty of Science and Engineering,
Sorbonne University
Université Paris Cité
L'École des Hautes Etudes en Sciences Sociales
Mathématiques Appliquées & Systems Laboratory,
Ecole Centrale Paris *
Centre d'études et de
recherches sur les qualifications *
Magellan Research Center, University of Lyon and
Research Institute for the Management of
Organizations, University of Bordeaux *

Germany

The Faculty of Arts and Humanities,
University of Cologne
Mercator School of Management,
University of Duisburg-Essen
School of Business & Economics,
Free University of Berlin
Die Philosophische Fakultät der
Heinrich-Heine-Universität Düsseldorf
Fakultät 8 - Naturwissenschaftlich-Technische
Fakultät III, Universität des Saarlandes
Faculty of Computer Science,
Otto von Guericke University Magdeburg
Institute of Sport and Exercise Sciences,
Faculty of Psychology and Sport Science,
University of Münster

Institute of Sports and Human Movements
Science at the Department of Education and
Cultural Studies, University of Osnabrück

Faculty of Economics and Social Sciences,
Eberhard Karls Universität Tübingen

Institute of Sports Science,
Faculty of Economics and Social Sciences,
Eberhard Karls Universität Tübingen

Faculty of Law,
Eberhard Karls Universität Tübingen

Jena Center for Reconciliation Studies,
Friedrich Schiller University Jena *

Italy

University of Siena

International University of Languages and Media
Politecnico di Milano

University of Gastronomic Sciences
Department of Social and Political Sciences,
University of Milan

Kazakhstan

KIMEP University

Kyrgyzstan

Kyrgyz National University
Named After Jusup Balasagyn

Netherlands

International Criminal Court
University College Maastricht, Maastricht University

Norway

Norwegian University of Science and Technology
UiS Business School, University of Stavanger

Portugal

Instituto Superior Técnico

Russia

Peter the Great St.Petersburg
Polytechnic University,
Institute of Energy and Transport Systems

Serbia

Faculty of Political Sciences,
University of Belgrade

Spain

School of Engineering (ICAI),
Universidad Pontificia Comillas
ETSI Industriales, ETSI Telecomunicación and ETSI
Informáticos, Universidad Politécnica de Madrid

Faculty of Physical Activity and Sports Science,
Universidad Politécnica de Madrid

IE University

Slovenia

University of Ljubljana

Sweden

School of Business, Economics and Law,
University of Gothenburg

Switzerland

Theologischen Fakultät der Universität Zürich

Faculty of Law, University of Zurich

Faculty of Theology, the University of Zurich

U.K.

Faculty of Social Sciences, University of Leeds

University of Stirling

School of Optometry and Vision Sciences,
Cardiff University

University of Southampton

The University of Sussex

Department of East Asian Studies,
University of Cambridge

The Department of Anthropology,
University College London

Africa & Middle East

Egypt

Center of Oriental Studies, Cairo University

Iran

Bagher al-Oloum University

Faculty of Theology and Islamic Studies,
University of Tehran

Institute for Political and International Studies(IPIS)

Center for Graduate International Studies,
Faculty of Law and Political Sciences
University of Tehran

Center for Strategic Research *

Israel

Faculty of Humanities, University of Haifa

Faculty of Humanities,
The Hebrew University of Jerusalem

Department of East Asian Studies,
Faculty of Humanities,
The Hebrew University of Jerusalem

Jordan

Royal Institute for Inter-Faith Studies

Qatar

College of Humanities and Social Sciences,
Hamad Bin Khalifa University

Al Jazeera Center for Studies,
Al Jazeera Media Network *

Saudi Arabia

Arabic Islamic Institute in Tokyo,
Deanery of Institutes Abroad,
Al-Imam Muhammad Ibn Saud Islamic University

Syria

Sheikh Ahmad Kuffaro Foundation

Turkey

Ibn Haldun University

Faculty of Electrical and Electronics Engineering,
Yildiz Technical University

Graduate School of Science and Engineering,
Yildiz Technical University

Asia

China

School of Social and Public Administration, East China University of Science and Technology
School of Social Development and Public Policy, Fudan University
Law School, Renmin University of China
School of International Studies, Renmin University of China
School of Law, Yunnan University
Center for China Public Sector of Economy Research, Jilin University
School of Economics, Jilin University
Institute of Political Sciences, Chinese Academy of Social Sciences
School of Government, Peking University
College of Foreign Languages and International Studies, Hunan University
School of Statistics, Renmin University of China
School of Biomedical Engineering, Dalian University of Technology
School of Physics, Dalian University of Technology
College of Engineering and College of Science, Shantou University
Graduate School, Xi'an Jiaotong University
Graduate School, Xidian University
School of International Relations and Public Affairs, Fudan University
School of Business, Renmin University of China
School of Japanese Studies, Dalian University of Foreign Languages
College of Foreign Language, Donghua University
College of Foreign Languages and International Studies, Hunan University
School of Languages, Northeastern University at Qinhuangdao
College of Foreign Languages, Qingdao Agricultural University
School of Japanese Studies, Shanghai International Studies University
School of Oriental Language and Philosophy, Zhejiang Gongshang University
China University of Political Science and Law
Center for New Energy System and Energy Conservation Technology, Peking University *
Hunan Key Laboratory for Computation and Simulation in Science and Engineering & Institute for Computation and Applied Mathematics, Xiangtan University *
Regional Office for Asia and the Pacific of the Hague Conference on Private International Law

India

Kalinga Institute of Industrial Technology
Asian-African Legal Consultative Organization
The Center for Atmospheric and Energy Studies, Bharathiar University *

Indonesia

Faculty of Social and Political Sciences, Hasanuddin University
Faculty of Medicine, Udayana University
Faculty of Economics and Business, Universitas Gadjah Mada
Faculty of Law, Diponegoro University *
Intellectual Property Right Lecturer Association *
Faculty of Law, Udayana University *
Faculty of Law, Universitas Indonesia *
Universitas Pendidikan Nasional *

Korea

Methodist Theological University
Presbyterian University and Theological Seminary
Department of Social Welfare, College of Social Sciences, Chung-Ang University
College of Commerce and Economics, Kyungsung University
School of Business, Yonsei University
College of Social Sciences, Chungbuk National University
College of Political Science and Economics, Korea University
College of Humanities and Social Sciences Convergence, Yonsei University
Konkuk University Law School
Dongduk Women's University
Seoul Theological University
Sungshin University
Regional Innovation Center for Automobile Powertrains, Inha University *
Research Institute of Personal Document and Compressed Modernity, Chonbuk National University *
Korea Institute of Foreign Relations, Dongguk University *
Center for Korean Studies, Inha University *
Research Institute of Korean Studies, Korea University *
Institute of Humanities, Seoul National University *
Institute of Social Sciences, Sogang University *
Center for East Asian History, Sungkyunkwan University *
Institute for Korean Studies, Yonsei University *
Institute for the Study of Korean Modernity, Yonsei University *
Institute of Humanities, Chosun University *

Malaysia

School of Management, Universiti Sains Malaysia
School of Mathematical Sciences, Universiti Sains Malaysia

Philippines

School of Science and Engineering, Ateneo de Manila University, Philippines
University of the Philippines Los Banos

Taiwan

College of Liberal Arts, National Chengchi University
Law School, National Chung Cheng University
School of Law, Soochow University
College of Management, National University of Kaohsiung
Institute of Statistical Science, Academia Sinica
College of Liberal Arts, National Sun Yat-sen University
College of Humanities and Social Sciences, National University of Kaohsiung
College of Foreign Languages and Literatures, Tamkang University
College of Management, National Taiwan Normal University
Department of Applied Japanese, School of Education and Applied Languages, Ming Chuan University
Department of Japanese Language and Literature, School of Foreign Language and Culture, Soochow University
College of Arts, Tunghai University

Thailand

Arsonm Slip Institute of the Arts
Faculty of Law, Thammasat University
Faculty of Economics, Chulalongkorn University
King Mongkut's Institute of Technology Ladkrabang
Faculty of Medicine, Khon Kaen University
School of Allied Health Sciences, Walailak University
Faculty of Medicine, Khon Kaen University *

Vietnam

School of Law, Vietnam National University, Hanoi
Faculty of Law of National Economics University, Hanoi
Faculty of Urban & Environment of National Economics University, Hanoi
School of Electrical Engineering, Hanoi University of Science and Technology
University of Law, Hue University *

North, Central & South America

Canada

Faculté de Droit, Université de Montréal
Polytechnique Montréal
Acadia University

Ecuador

FLACSO Ecuador (Facultad Latinoamericana de Ciencias Sociales Sede Ecuador)

Mexico

Centro de Investigaciones y Estudios Superiores en Antropología Social (CIESAS)

U.S.A

Hartford Seminary
Graduate Theological Union
James E. Rogers College of Law, The University of Arizona
Division of International Education, The University of New Orleans
College of Arts and Letters, Michigan State University
College of Arts and Sciences, The University of North Carolina at Chapel Hill
Duke Law School
Michigan State University College of Law
The Straus Institute for Dispute Resolution at the School of Law, Pepperdine University
The University of California Hastings College of the Law
National Fuel Cell Research Center, University of California, Irvine *

Words on the cover : 「良心之全身ニ充滿シタル丈夫ノ起リ来ラン事ヲ」

I earnestly desire that many young people filled with conscience will be raised and sent out by our school.

Joseph Neesima, the founder of Doshisha, wrote these words in a letter to one of his students in 1889, two months before he passed away at the age of 46. 'Conscience' is the principle that underpins Doshisha's educational philosophy. Neesima, through his nine years spent in Western countries, realized that Christianity, especially Protestantism, significantly influenced the Western culture and mind. For Neesima, an important aspect of Christianity was that conscience grows not before the eyes of humans but before the eyes of God. He believed that one can become a true human being by cultivating conscience, and that conscience can be effectively inspired through an education based on Christian principles. It appeared to him that education in Japan emphasized intellectual development more than the cultivation of the mind. Thus, his educational goal was not to produce 'specialists without spirit' (Max Weber), or 'talented individuals without conscience', but instead -as Neesima wrote in 'The Purpose of the Establishment of Doshisha University'- to raise people who will be 'the conscience of a nation'.



Doshisha University Website
<https://www.doshisha.ac.jp>



Official Facebook page of International Center, Doshisha University
<https://www.facebook.com/DoshishaU.IC>

