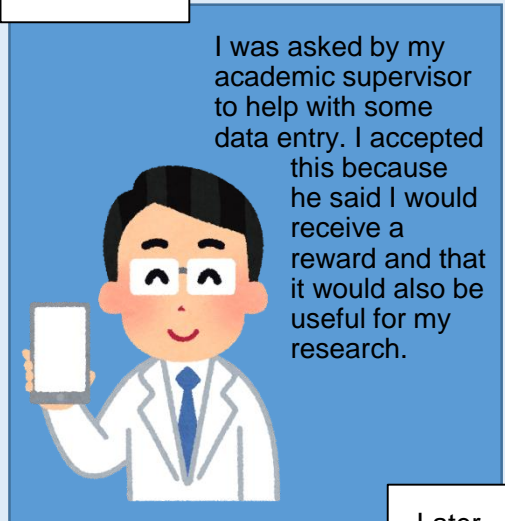
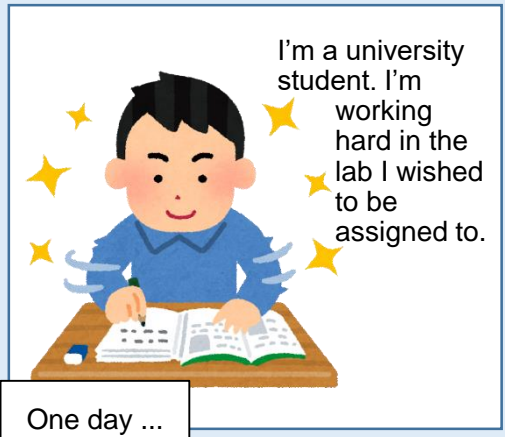


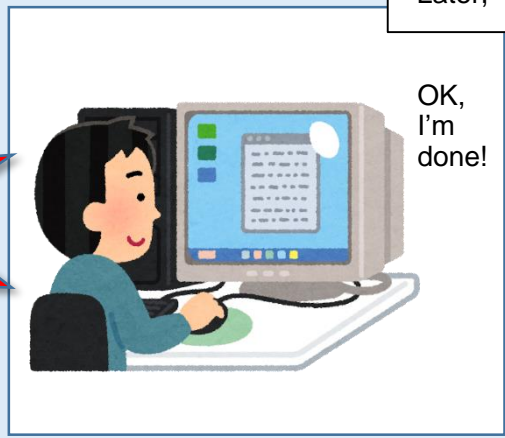
# STOP!

## Misuse of Research Funds

Education and research expenditures by universities are mainly sourced from tuition fees, government subsidies, public research funds, and funds provided by the private sector. Therefore, the unauthorized or improper use of such funds cannot be permitted. Nevertheless, incidents of misuse of funds may occur around you. Please be careful not to become unwittingly involved in improper activities.



**Stop right there!**  
**That constitutes the misuse of research funds!**



For details, see the reverse side.

# Explanation

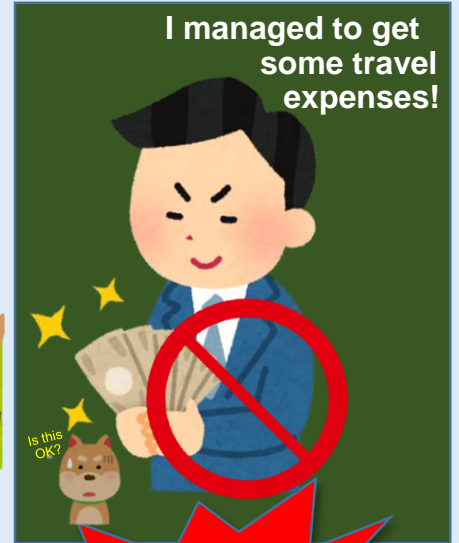
It is not permitted, under any circumstances, to collect all or part of the money (compensation, salary, travel expenses, etc.) paid to a student who has helped with a survey or experiment or made a business trip at the request of his/her teacher, and manage the money as a pool of funds for a lab.

At some universities, there have been cases where compensation for research assistance paid to students was collected to create a pool of funds, even though the research assistance itself was never carried out.

Another case ...



Without actually going on the trip ...



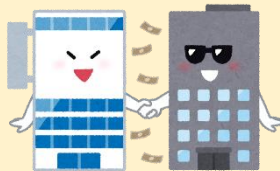
**That's a fictitious business trip!**



Claiming travel expenses from the university without actually going on a business trip constitutes a "fictitious business trip," which also constitutes the misuse of research funds.

## Other examples of misuse!

A researcher conspires with a supplier to place a fictitious order and have the supplier manage the money received for the fictitious order.



A lab purchases a number of goods with high cash value using research funds, in order to resell them.



\* If a lab trades in a PC that is no longer necessary and manages the profit on its sale, it may be considered to constitute misuse. (This does not include goods purchased at private expense.)



Research funds are indispensable for conducting research. Researchers need to assume responsibility to use research funds appropriately. Research funds come from various sources, from tuition fees to subsidies from the public and private sectors. The misuse of research funds is an act that betrays the trust of society.

Doshisha University has established detailed rules for the use of research funds. Be sure to understand the rules and use research funds appropriately.

See the University website as well.

